



ELEVATION C

ABOUT THE SUNSTONE

Everything’s just where you need it in this charming ranch-style floor plan. As you enter, you’ll find an elegant study just off the entryway. Beyond the entry, an inviting kitchen with a walk-in pantry and generous eat-in island flows into a charming dining room—and beyond that, the great room. From the great room, you’ll enjoy a stylish sliding-glass door that provide access to a relaxing covered patio. This floor plan also includes four bedrooms, with an optional fifth bedroom in lieu of the study. Conversely, select bedrooms are available as a teen room or additional garage space. Completing the floor plan, a beautiful owner’d suite boasts two walk-in closets—one of which can be converted into a tech center—and a private bath.

COMMUNITY LOCATION:

Seasons at Cottonwood Ranch | 1218 East Vekol Street | Casa Grande, AZ 85122 | 520.635.6602

HOME GALLERY LOCATION:


Phoenix Home Gallery™ | 16427 North Scottsdale Road, Suite 175 | Scottsdale, AZ 85254 | 877.444.1485 Select Opt. 3

\*This information is presented for education purposes only. The HERS index for a confirmed rating will be determined by a third-party HERS rater based on data gathered from on-site observations and, if required, testing of rated features for a home as featured, optioned, located, oriented and/or built.

+Standard new home is based on the RESNET® Reference Home definition with a HERS® index of 100 (based on the 2006 International Energy Conservation Code).

++Typical resale home is based on the U.S. Department of Energy definition with a HERS® index of 130.

^RESNET® has developed the HERS® index to indicate the comparative efficiencies of homes. It is no guarantee that energy efficiencies will be achieved.



Floor plans and renderings are conceptual drawings and may vary from actual plans and homes as built. Options and features may not be available on all homes and are subject to change without notice. Actual homes may vary from photos and/or drawings which show upgraded landscaping and may not represent the lowest-priced homes in the community. Features may include optional upgrades and may not be available on all homes. Square footage numbers are approximate and are subject to change without notice. ©2021 Richmond American Homes, Richmond American Homes of Arizona, Inc. (a public report is available on the state real estate department’s website), Richmond American Construction, Inc. ROC #206612. 4/8/2021

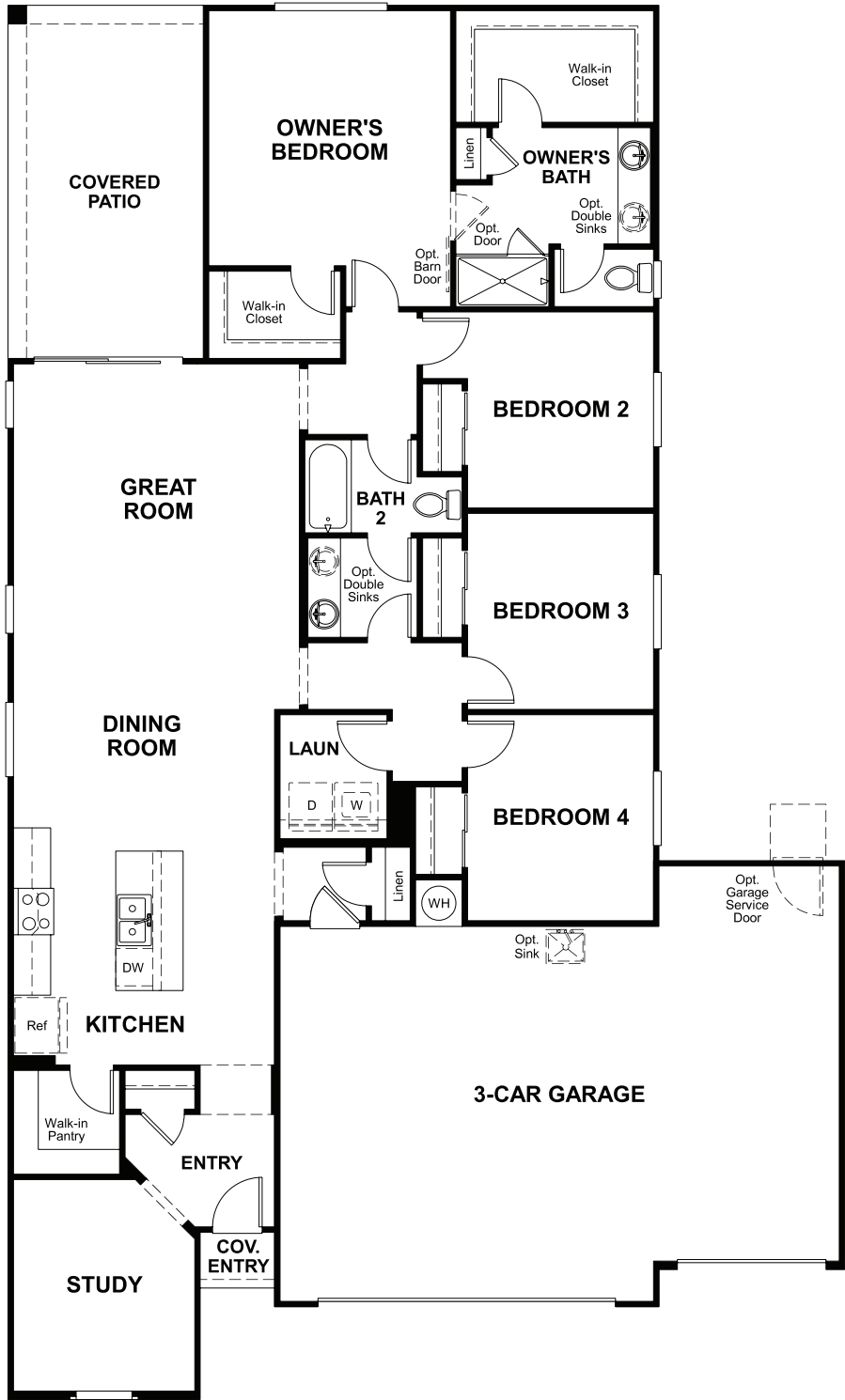


ELEVATION A

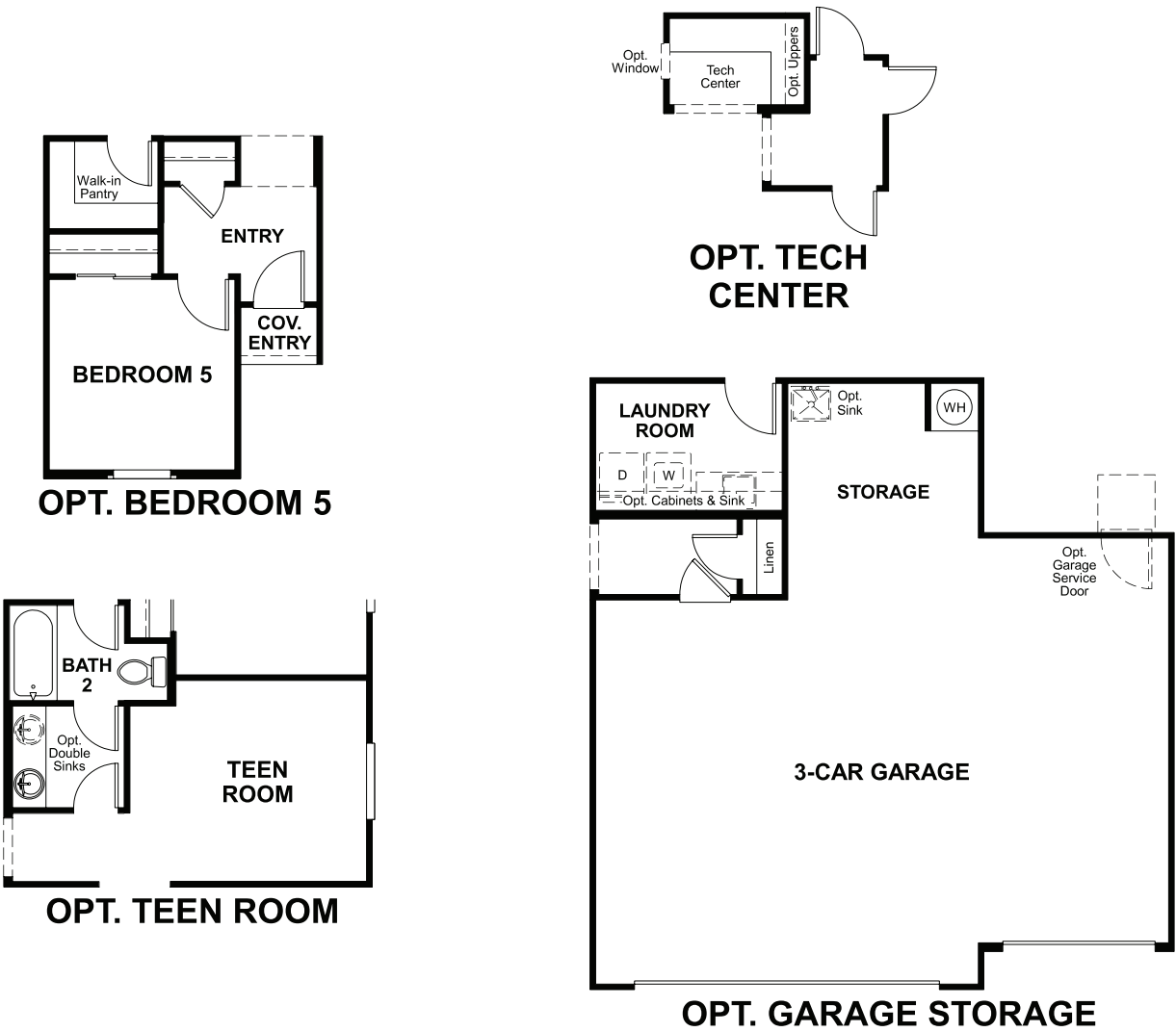


ELEVATION B

MAIN FLOOR



MAIN FLOOR OPTIONS



THIS PLAN'S PROJECTED  
**HERS® INDEX = 56\***  
Projected Rating Based on Plans – Field Confirmation required

**How does this floor plan rate?**  
Take a look: **100** = Standard new home+ **130** = Typical resale Home++  
The lower number, the better! Refer to the RESNET® HERS index brochure or go to [www.RESNET.us](http://www.RESNET.us) and [www.HERSindex.com](http://www.HERSindex.com)

**What's a HERS® Index?** HERS stands for Home Energy Rating System, a system created by RESNET® to measure home energy efficiency.^  
A Projected HERS index or rating is a computer simulation performed prior to construction by a third-party HERS rater using RESNET-accredited rating software, rated feature and specification data derived from home plans, features and specifications, and other data selected or assumed by the rater. The projected HERS index is approximate and is subject to change without notice. Actual results will vary.