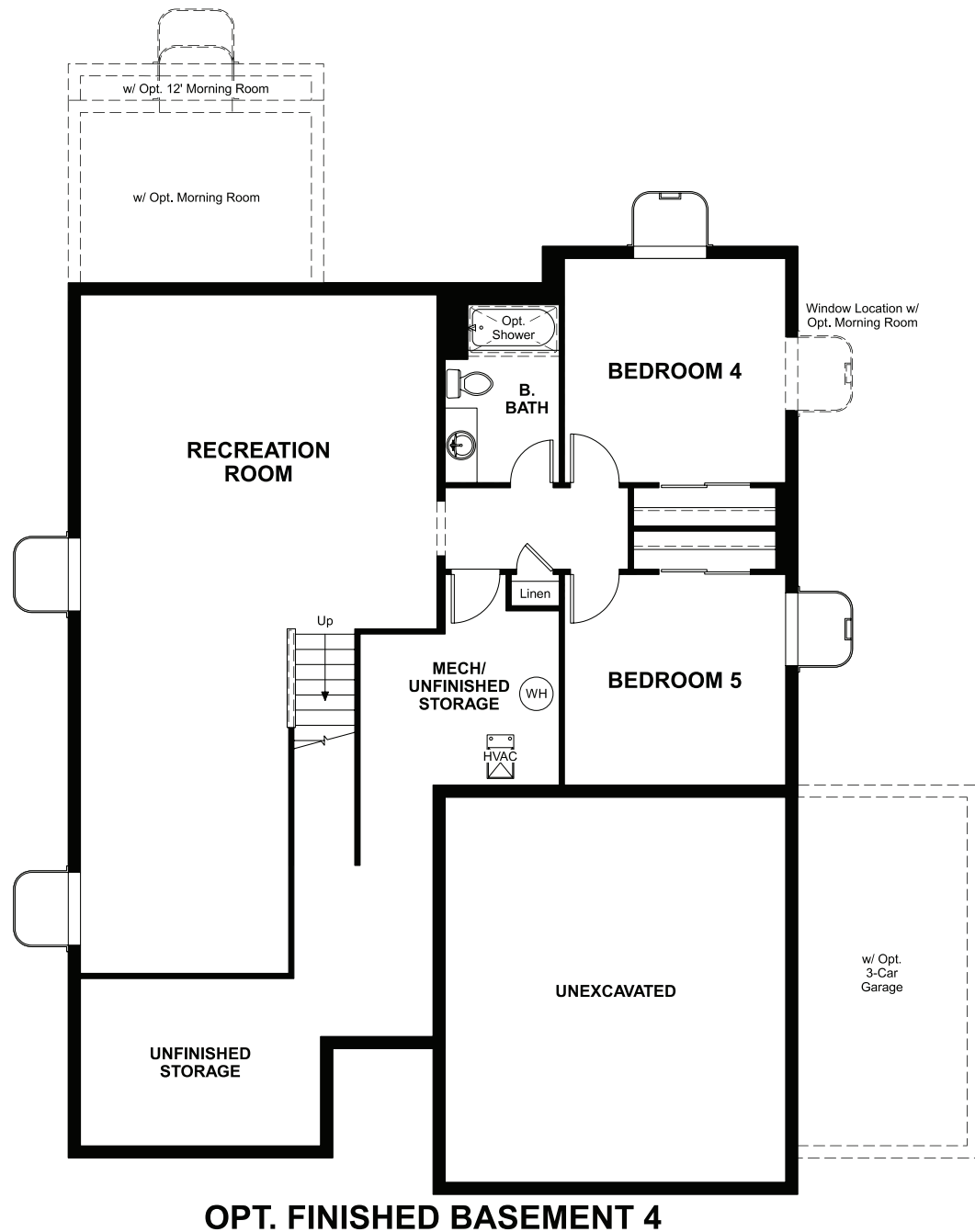


BASEMENT



ELEVATION C

ABOUT THE PONDEROSA

The ranch-style Ponderosa plan was designed for entertaining. An inviting kitchen, complete with center island and breakfast nook, flows into a spacious great room, and an optional covered patio is the perfect place to gather with family and friends. The well-appointed home also features a central laundry and three generous bedrooms, including a private master suite with an attached bath and oversized walk-in closet. Personalization options include a gourmet kitchen, sunroom, deluxe master bath and finished basement.



ELEVATION B

COMMUNITY LOCATION:

The Trails at Aspen Ridge | 5400 Sunday Gulch Drive | Colorado Springs, CO 80911 | 303.850.5750

HOME GALLERY LOCATION:

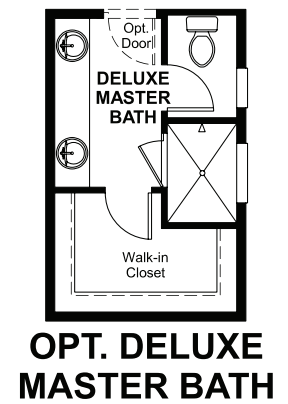
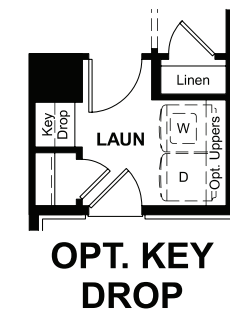
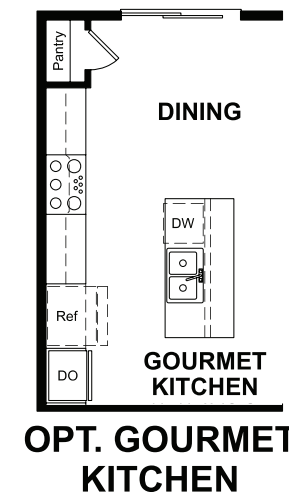
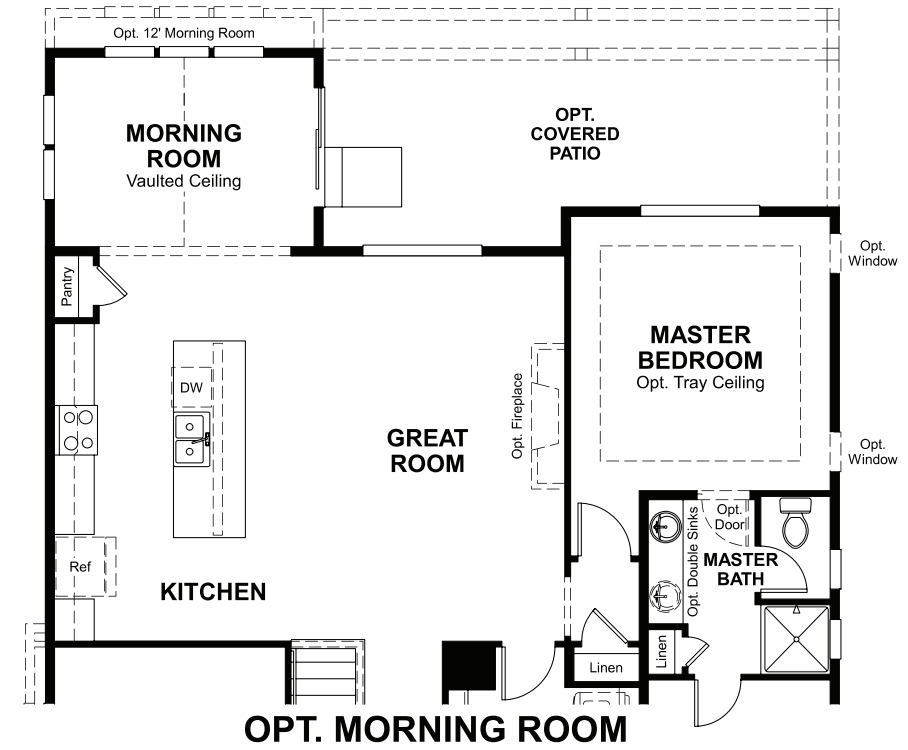
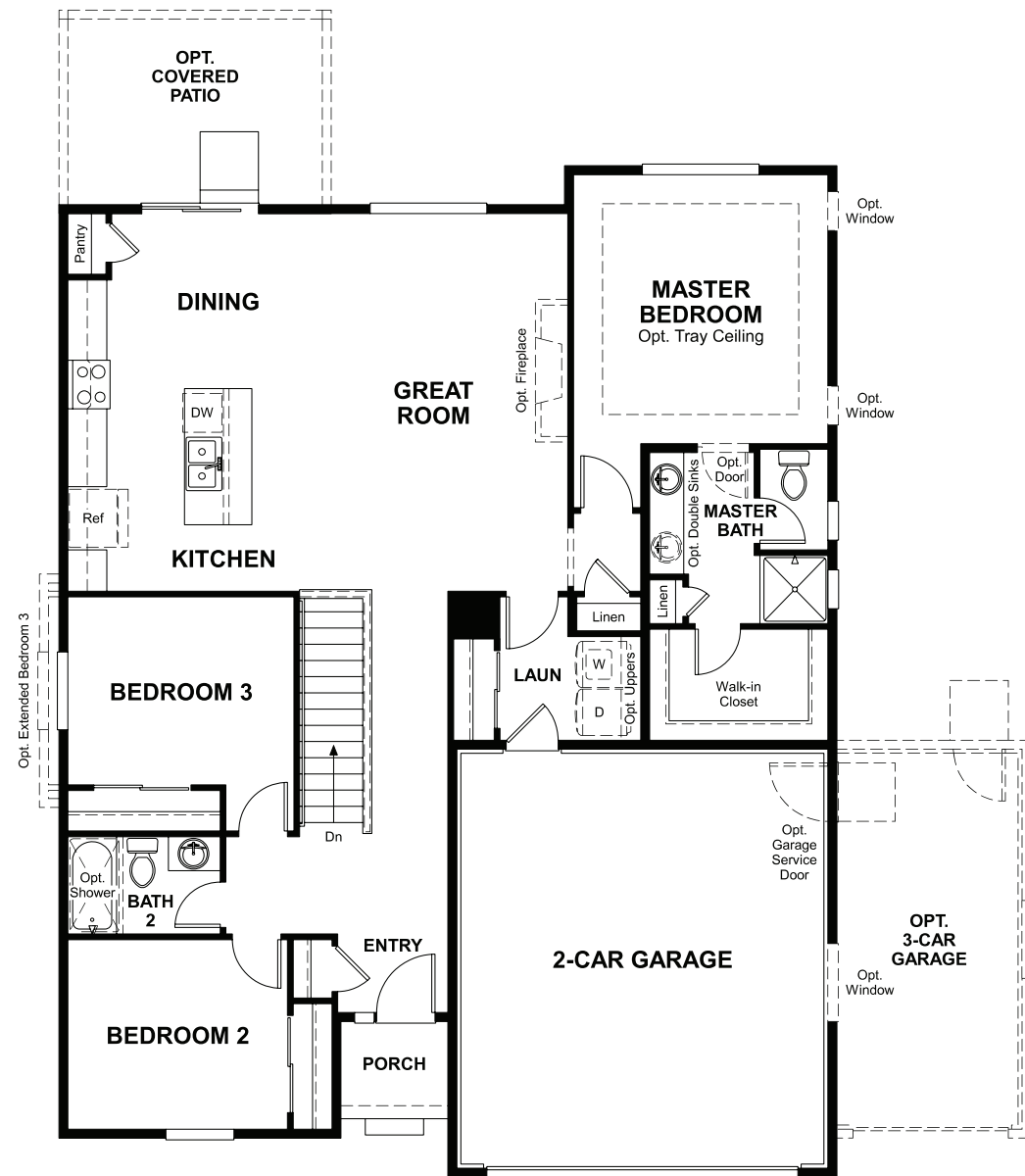
Denver Metro Home Gallery™ | 8000 East Belleview Avenue, Suite C-12 | Greenwood Village, CO 80111 | 888.402.4663



Floor plans and renderings are conceptual drawings and may vary from actual plans and homes as built. Options and features may not be available on all homes and are subject to change without notice. Actual homes may vary from photos and/or drawings which show upgraded landscaping and may not represent the lowest-priced homes in the community. Features may include optional upgrades and may not be available on all homes. Square footage numbers are approximate and are subject to change without notice. Prices, specifications and availability subject to change without notice. ©2021 Richmond American Homes, Richmond American Homes of Colorado, Inc. 2/8/2021

MAIN FLOOR

MAIN FLOOR OPTIONS



Floor plans and renderings are conceptual drawings and may vary from actual plans and homes as built. Options and features may not be available on all homes and are subject to change without notice. Actual homes may vary from photos and/or drawings which show upgraded landscaping and may not represent the lowest-priced homes in the community. Features may include optional upgrades and may not be available on all homes. Square footage numbers are approximate and are subject to change without notice. Prices, specifications and availability subject to change without notice. ©2021 Richmond American Homes, Richmond American Homes of Colorado, Inc. 2/8/2021

Floor plans and renderings are conceptual drawings and may vary from actual plans and homes as built. Options and features may not be available on all homes and are subject to change without notice. Actual homes may vary from photos and/or drawings which show upgraded landscaping and may not represent the lowest-priced homes in the community. Features may include optional upgrades and may not be available on all homes. Square footage numbers are approximate and are subject to change without notice. Prices, specifications and availability subject to change without notice. ©2021 Richmond American Homes, Richmond American Homes of Colorado, Inc. 2/8/2021