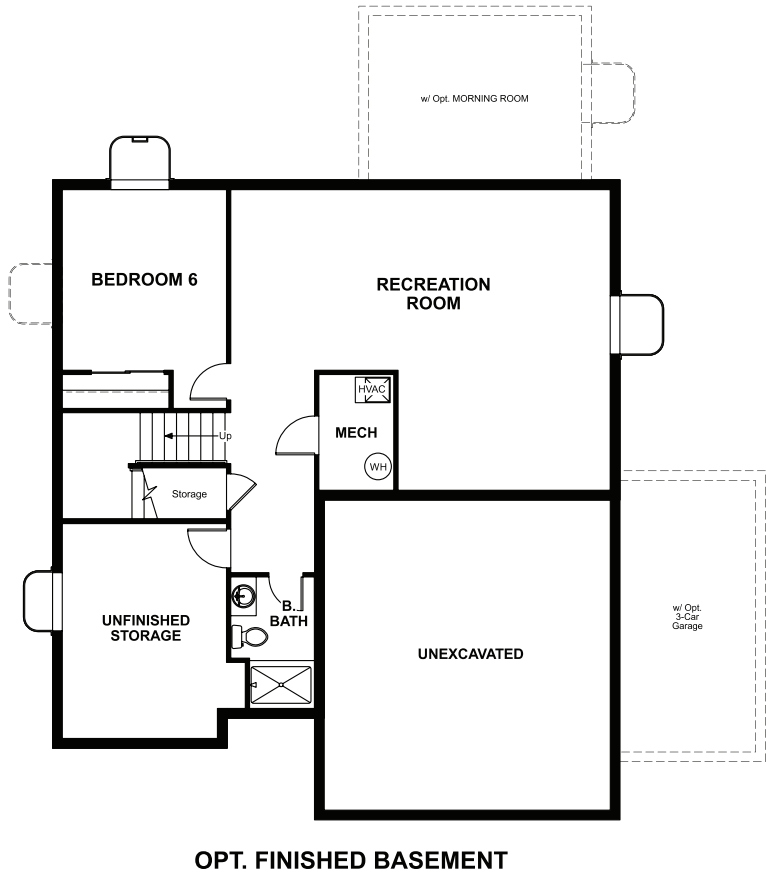


BASEMENT



OPT. FINISHED BASEMENT



ELEVATION E

ABOUT THE HEMINGWAY

The main floor of the beautiful Hemingway plan features versatile flex space, a great room with optional fireplace, an inviting kitchen with a central island and an optional covered patio. Upstairs, you'll find a convenient laundry, a spacious loft and a lavish master suite with a private bath and a roomy walk-in closet. An optional sunroom and finished basement are available.

COMMUNITY LOCATION:

The Trails at Aspen Ridge | 5400 Sunday Gulch Drive | Colorado Springs, CO 80911 | 303.850.5750

HOME GALLERY LOCATION:

Denver Metro Home Gallery™ | 8000 East Belleview Avenue, Suite C-12 | Greenwood Village, CO 80111 | 888.402.4663



Floor plans and renderings are conceptual drawings and may vary from actual plans and homes as built. Options and features may not be available on all homes and are subject to change without notice. Actual homes may vary from photos and/or drawings which show upgraded landscaping and may not represent the lowest-priced homes in the community. Features may include optional upgrades and may not be available on all homes. Square footage numbers are approximate and are subject to change without notice. Prices, specifications and availability subject to change without notice. ©2021 Richmond American Homes, Richmond American Homes of Colorado, Inc. 2/8/2021



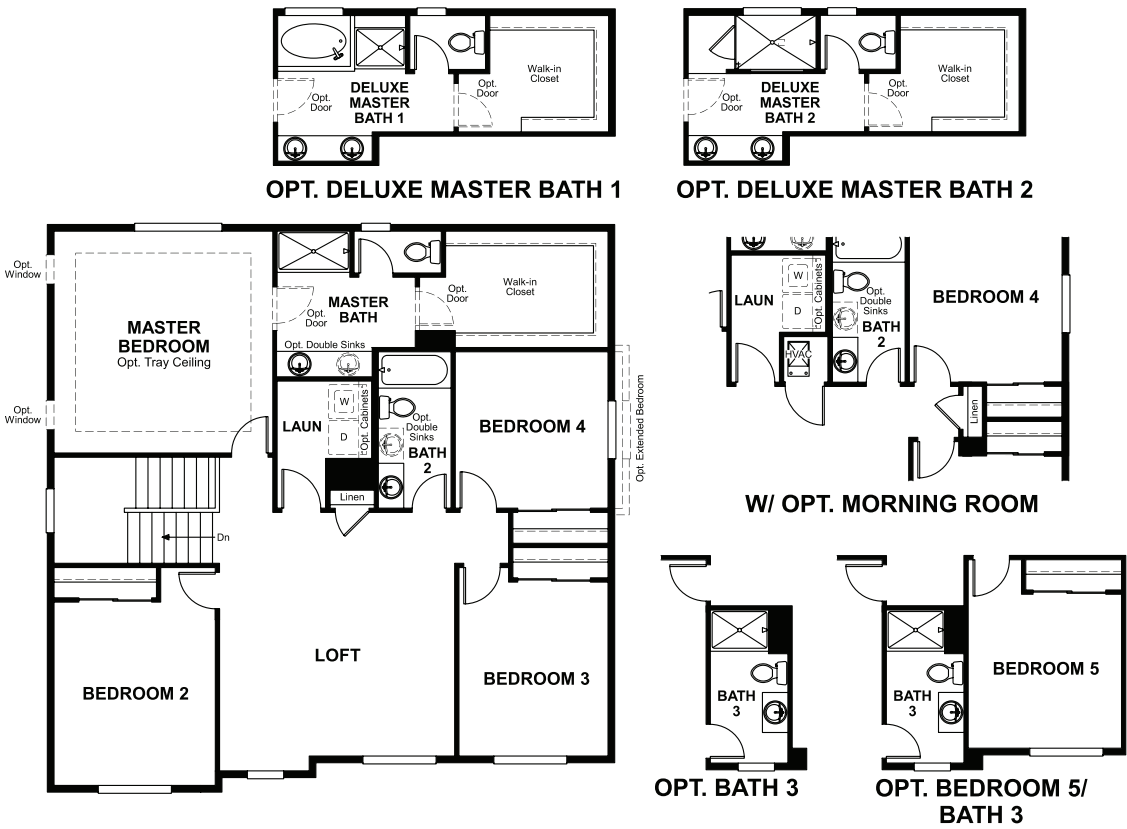
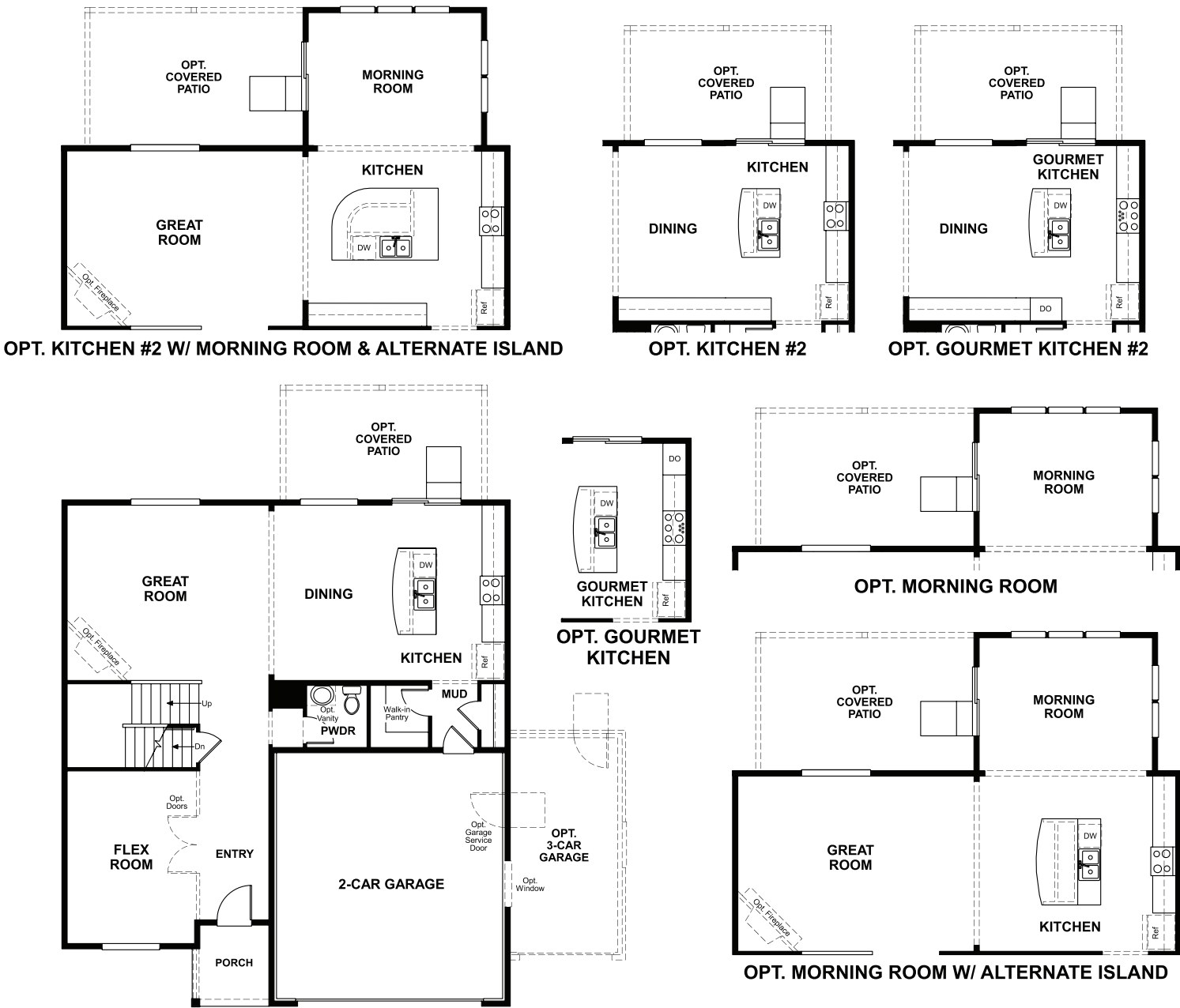
ELEVATION B



ELEVATION C

MAIN FLOOR

SECOND FLOOR



Floor plans and renderings are conceptual drawings and may vary from actual plans and homes as built. Options and features may not be available on all homes and are subject to change without notice. Actual homes may vary from photos and/or drawings which show upgraded landscaping and may not represent the lowest-priced homes in the community. Features may include optional upgrades and may not be available on all homes. Square footage numbers are approximate and are subject to change without notice. Prices, specifications and availability subject to change without notice. ©2021 Richmond American Homes, Richmond American Homes of Colorado, Inc. 2/8/2021

Floor plans and renderings are conceptual drawings and may vary from actual plans and homes as built. Options and features may not be available on all homes and are subject to change without notice. Actual homes may vary from photos and/or drawings which show upgraded landscaping and may not represent the lowest-priced homes in the community. Features may include optional upgrades and may not be available on all homes. Square footage numbers are approximate and are subject to change without notice. Prices, specifications and availability subject to change without notice. ©2021 Richmond American Homes, Richmond American Homes of Colorado, Inc. 2/8/2021