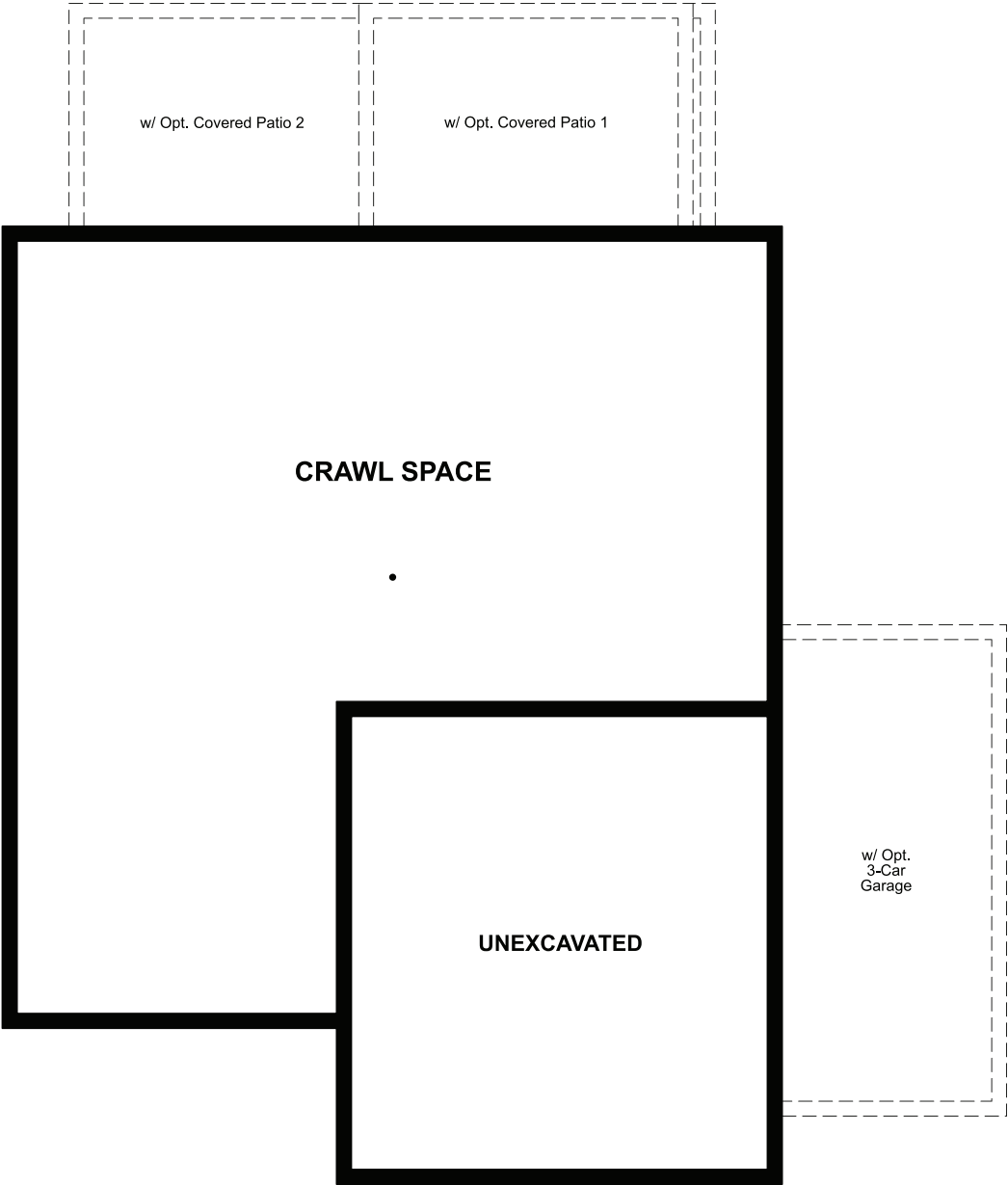



CRAWL SPACE



COMMUNITY LOCATION:

The Trails at Aspen Ridge | 5400 Sunday Gulch Drive | Colorado Springs, CO 80911 | 303.850.5750

 Floor plans and renderings are conceptual drawings and may vary from actual plans and homes as built. Options and features may not be available on all homes and are subject to change without notice. Actual homes may vary from photos and/or drawings which show upgraded landscaping and may not represent the lowest-priced homes in the community. Features may include optional upgrades and may not be available on all homes. Square footage numbers are approximate and are subject to change without notice. Prices, specifications and availability subject to change without notice. ©2023 Richmond American Homes, Richmond American Homes of Colorado, Inc. 10/31/2023



ELEVATION D

ABOUT THE LAPIS

The main floor of the beautiful Lapis plan offers an inviting great room and an open dining room that flows into a corner kitchen with a center island and walk-in pantry. This home will be built with either a flex room or a study. Upstairs, enjoy a convenient laundry and a luxurious primary suite. The second floor will be built with either a loft or additional bedroom. Additional features may include a cozy fireplace. You'll love the professionally curated finishes selected by our design team!

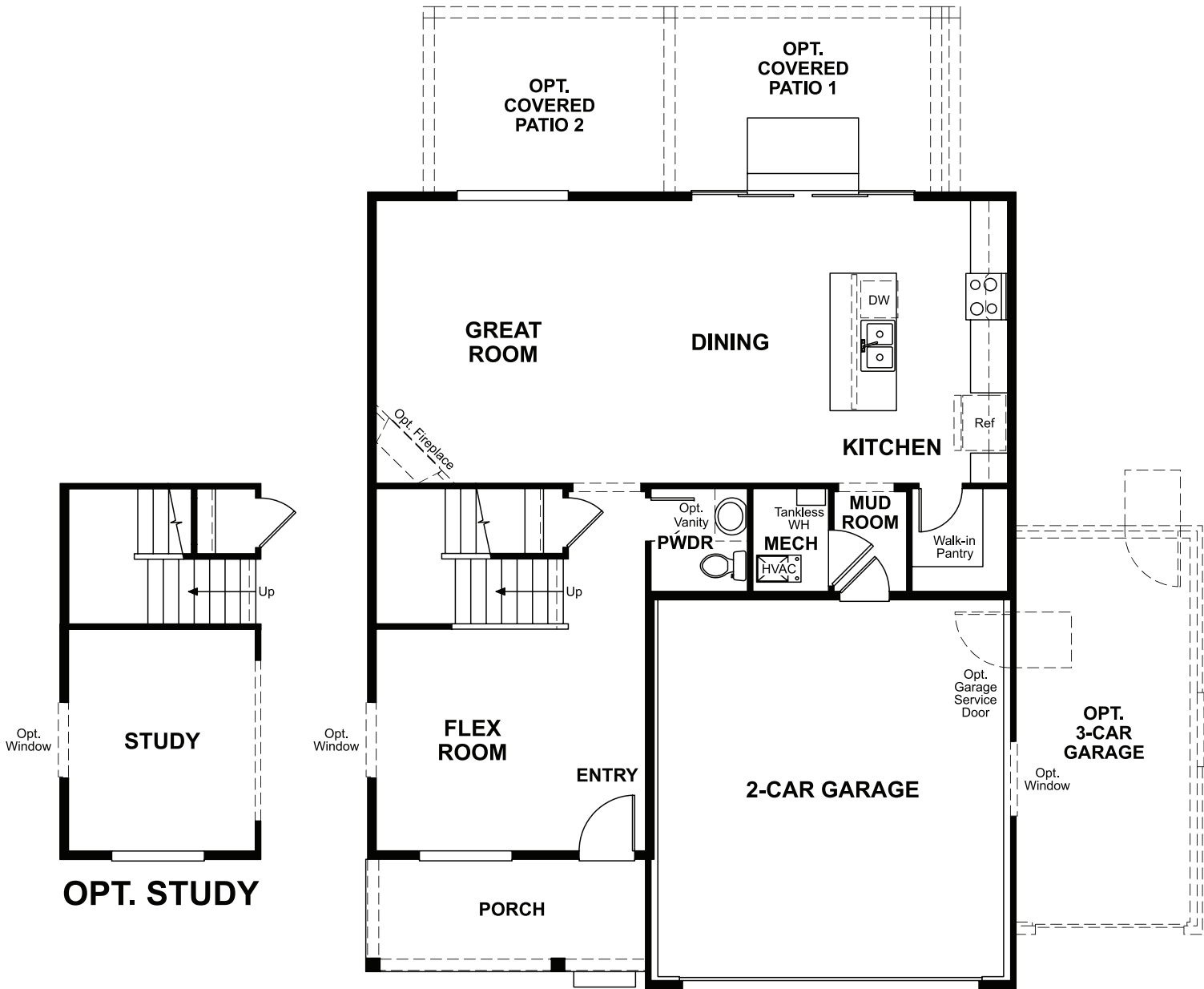


ELEVATION B

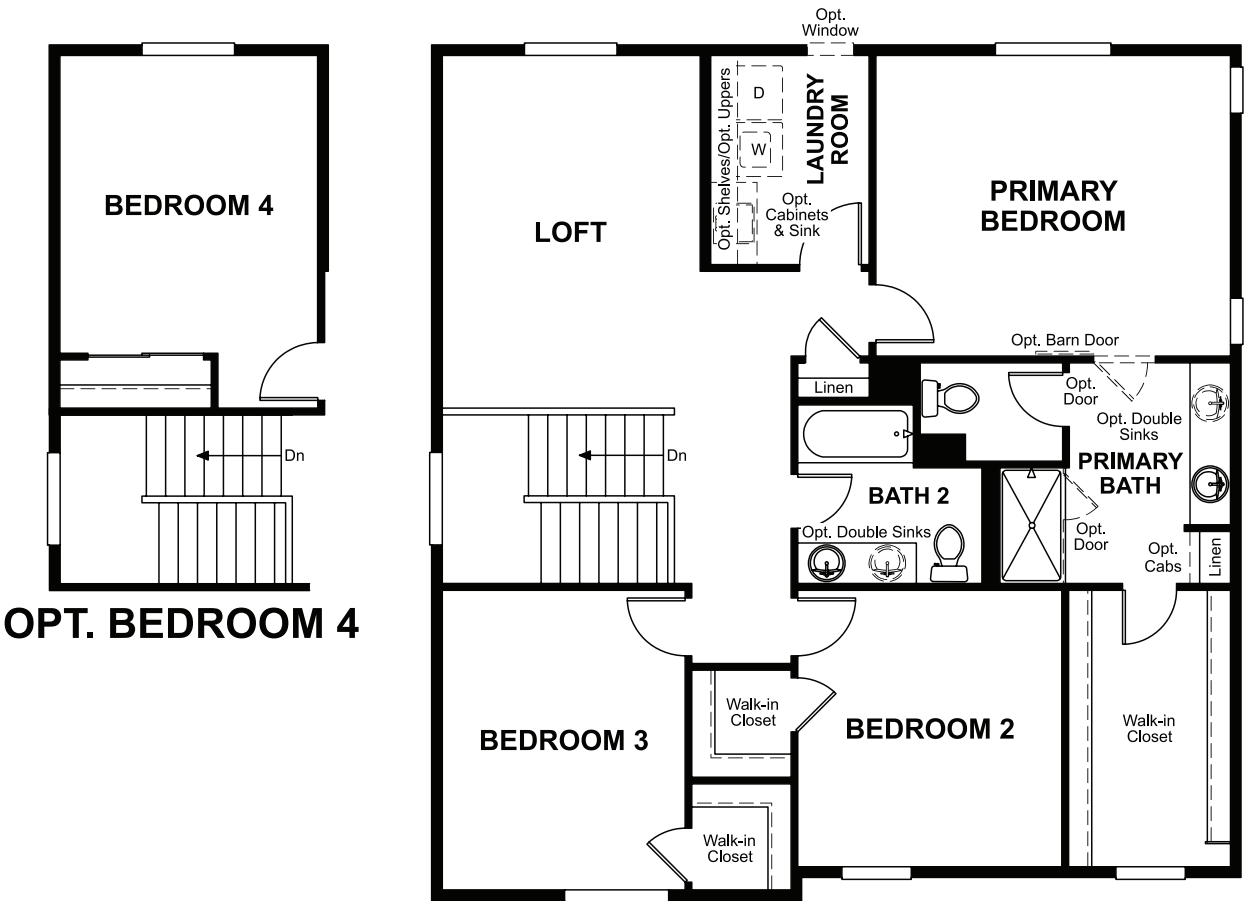


ELEVATION C

MAIN FLOOR



SECOND FLOOR



Floor plans and renderings are conceptual drawings and may vary from actual plans and homes as built. Options and features may not be available on all homes and are subject to change without notice. Actual homes may vary from photos and/or drawings which show upgraded landscaping and may not represent the lowest-priced homes in the community. Features may include optional upgrades and may not be available on all homes. Square footage numbers are approximate and are subject to change without notice. Prices, specifications and availability subject to change without notice. ©2023 Richmond American Homes, Richmond American Homes of Colorado, Inc. 10/31/2023

Floor plans and renderings are conceptual drawings and may vary from actual plans and homes as built. Options and features may not be available on all homes and are subject to change without notice. Actual homes may vary from photos and/or drawings which show upgraded landscaping and may not represent the lowest-priced homes in the community. Features may include optional upgrades and may not be available on all homes. Square footage numbers are approximate and are subject to change without notice. Prices, specifications and availability subject to change without notice. ©2023 Richmond American Homes, Richmond American Homes of Colorado, Inc. 10/31/2023