

SEASONS AT STONEBROOK  
THE MOONSTONE

Approx. 2,640 sq. ft. | 4-6 bedrooms | 2.5 baths | Plan #N914



ELEVATION D

ABOUT THE MOONSTONE

The two-story Moonstone plan was designed with your lifestyle in mind. An open main-floor layout showcases an airy great room with an optional fireplace, a dining area and a well-appointed kitchen with a center island and walk-in pantry. Create the perfect spot for al fresco entertaining right outside with one of two covered patio options! You'll also find a study on the first floor that can be optioned as a fifth bedroom. There are four generous bedrooms upstairs, including an elegant owner's suite with an oversized walk-in closet and private bath. A laundry and a versatile loft that can be personalized as a sixth bedroom complete the floor plan. Additional options include a built-in sink and cabinets at the laundry, an alternate kitchen layout and a bath in lieu of the powder room.

COMMUNITY LOCATION:

Seasons at Stonebrook | 8185 Joecy Way | Elk Grove, CA 95757 | **916.512.2004**

HOME GALLERY LOCATION:

Northern California Home Gallery™ | One Harbor Center, Suite 150 | Suisun City, CA 94585 | **707.416.2800**

\*This information is presented for education purposes only. The HERS index for a confirmed rating will be determined by a third-party HERS rater based on data gathered from on-site observations and, if required, testing of rated features for a home as featured, optioned, located, oriented and/or built.

+Standard new home is based on the RESNET® Reference Home definition with a HERS® index of 100 (based on the 2006 International Energy Conservation Code).

++Typical resale home is based on the U.S. Department of Energy definition with a HERS® index of 130.

^RESNET® has developed the HERS® index to indicate the comparative efficiencies of homes. It is no guarantee that energy efficiencies will be achieved.

Floor plans and renderings are conceptual drawings and may vary from actual plans and homes as built. Options and features may not be available on all homes and are subject to change without notice. Actual homes may vary from photos and/or drawings which show upgraded landscaping and may not represent the lowest-priced homes in the community. Features may include optional upgrades and may not be available on all homes. Square footage numbers are approximate and are subject to change without notice. ©2021 Richmond American Homes, Richmond American Homes of Maryland, Inc., California Department of Real Estate – Real Estate Broker, Corporation License Number 01842595. 9/24/2021



ELEVATION A

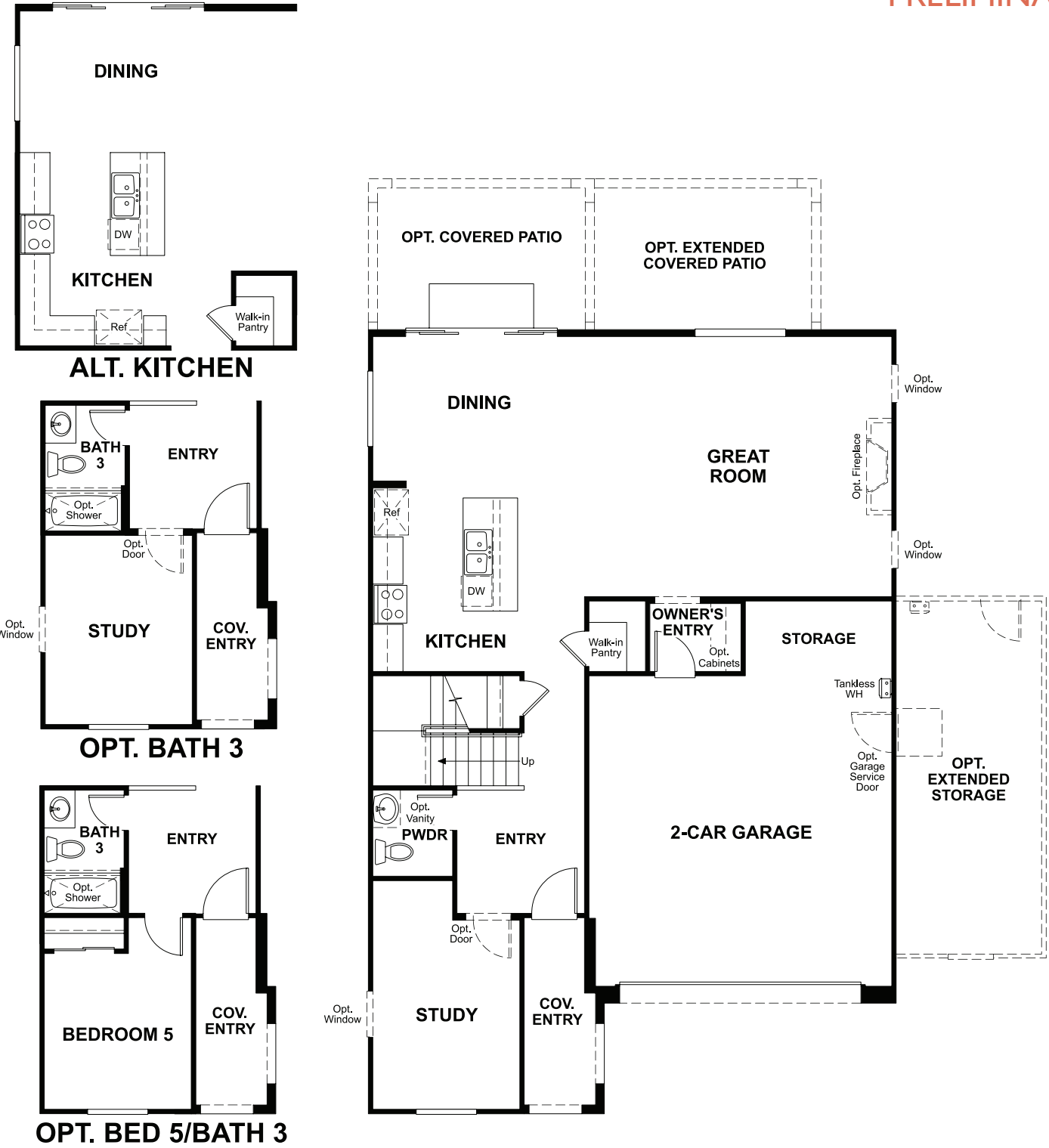


ELEVATION B

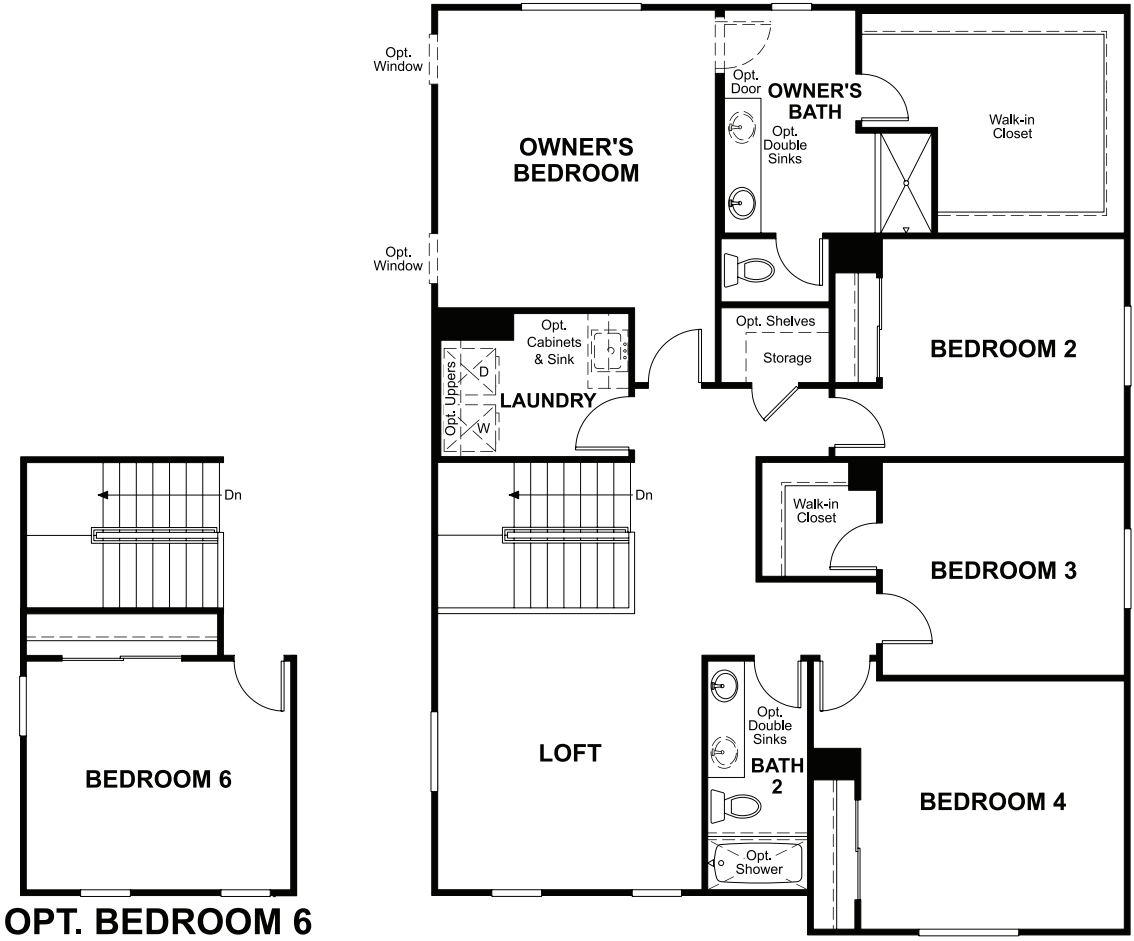


ELEVATION C

MAIN FLOOR  
PRELIMINARY



SECOND FLOOR  
PRELIMINARY



THIS PLAN'S PROJECTED  
**HERS® INDEX = 26\***  
Projected Rating Based on Plans – Field Confirmation required

**How does this floor plan rate?**  
Take a look: **100** = Standard new home+ **130** = Typical resale Home++  
The lower number, the better! Refer to the RESNET® HERS index brochure or go to [www.RESNET.us](http://www.RESNET.us) and [www.HERSindex.com](http://www.HERSindex.com)

**What's a HERS® Index?** HERS stands for Home Energy Rating System, a system created by RESNET® to measure home energy efficiency.^  
A Projected HERS index or rating is a computer simulation performed prior to construction by a third-party HERS rater using RESNET-accredited rating software, rated feature and specification data derived from home plans, features and specifications, and other data selected or assumed by the rater. The projected HERS index is approximate and is subject to change without notice. Actual results will vary.