



ELEVATION C

**ABOUT THE YORKTOWN**

The main floor of the Yorktown plan was designed for entertaining, offering an expansive great room with a cozy fireplace and a gourmet kitchen with a center island and adjacent dining area. Other highlights include a mudroom with a walk-in closet, a convenient powder room and a private study that can be optioned as an additional bedroom. Upstairs, discover an immense loft surrounded by three bedrooms, a shared bath, a laundry room and an elegant owner's suite featuring a private bath and spacious walk-in closet. A 3-car garage is also included. Personalize this plan with an optional sunroom, a chef's kitchen, a deluxe owner's bath, a covered patio and more!



ELEVATION A



ELEVATION B

**COMMUNITY LOCATION:**

Madronas | 122nd Avenue East and Sunrise Boulevard | Puyallup, WA 98374 | **253.235.4570**

**HOME GALLERY LOCATION:**

Washington Home Gallery™ | 20829 72nd Avenue South, Suite 115 | Kent, WA 98032 | **253.446.7277**

\*This information is presented for education purposes only. The HERS index for a confirmed rating will be determined by a third-party HERS rater based on data gathered from on-site observations and, if required, testing of rated features for a home as featured, optioned, located, oriented and/or built.

+Standard new home is based on the RESNET® Reference Home definition with a HERS® index of 100 (based on the 2006 International Energy Conservation Code).

++Typical resale home is based on the U.S. Department of Energy definition with a HERS® index of 130.

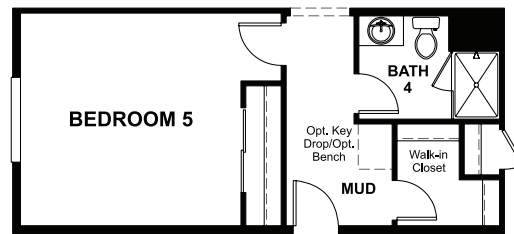
^RESNET® has developed the HERS® index to indicate the comparative efficiencies of homes. It is no guarantee that energy efficiencies will be achieved.



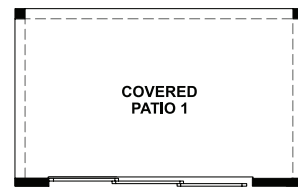
Floor plans and renderings are conceptual drawings and may vary from actual plans and homes as built. Options and features may not be available on all homes and are subject to change without notice. Actual homes may vary from photos and/or drawings which show upgraded landscaping and may not represent the lowest-priced homes in the community. Features may include optional upgrades and may not be available on all homes. Square footage numbers are approximate and are subject to change without notice. Prices, specifications and availability subject to change without notice. ©2021 Richmond American Homes, Richmond American Homes of Washington, Inc. 11/12/2021

MAIN FLOOR

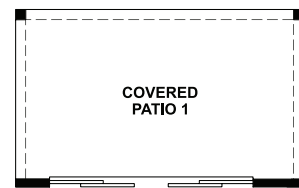
SECOND FLOOR



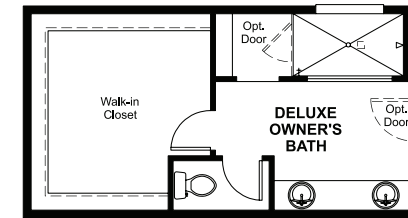
OPT. BED 5/BATH 4



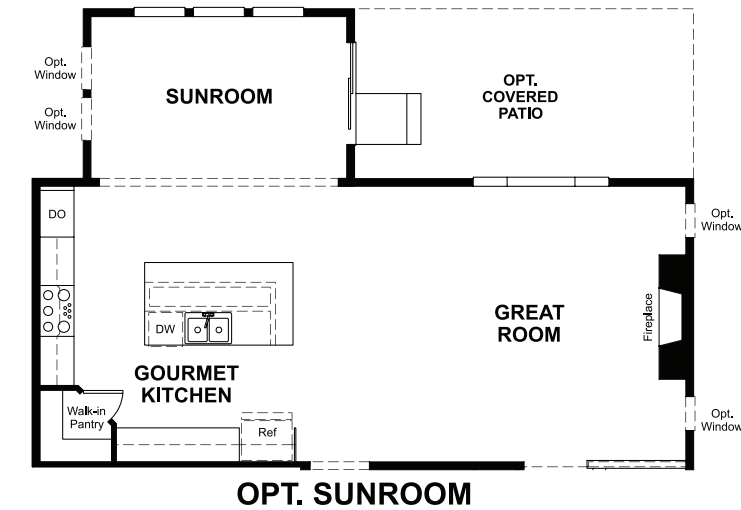
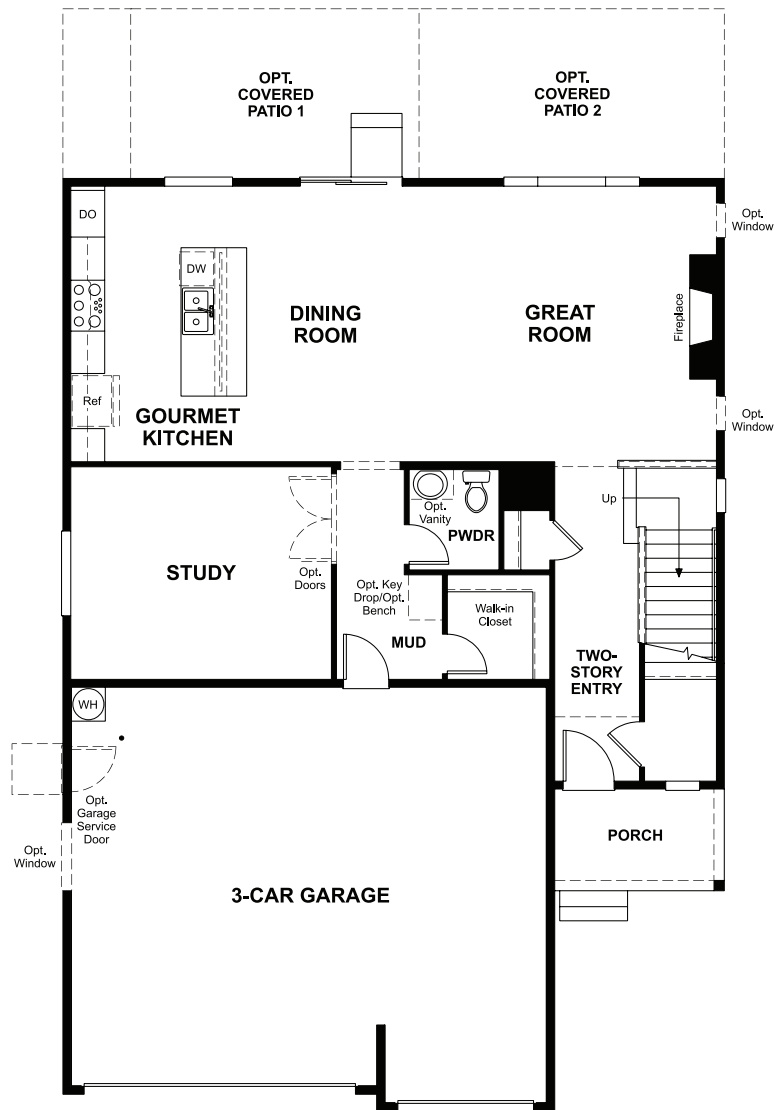
OPT. CENTER-MEET DOORS AT COVERED PATIO



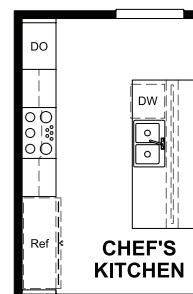
OPT. MULTI-SLIDE DOORS AT COVERED PATIO



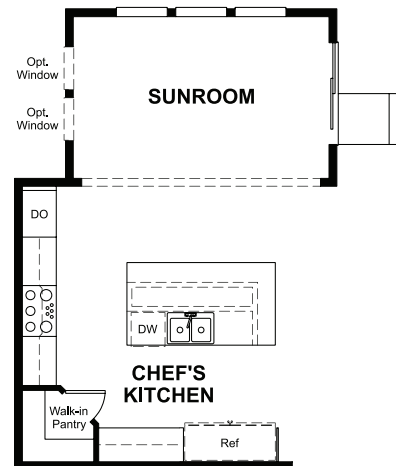
OPT. WALK-IN SHOWER



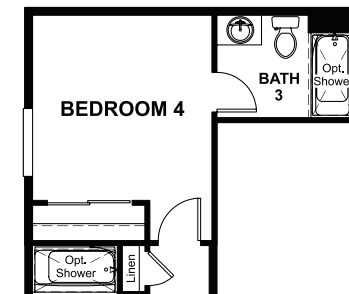
OPT. SUNROOM



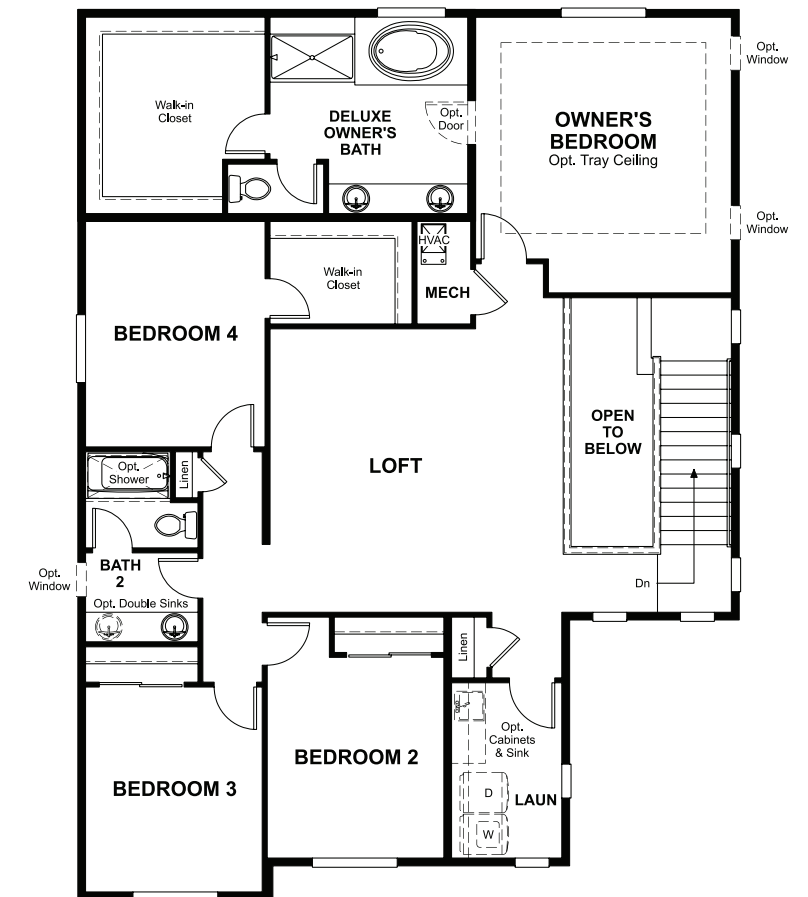
OPT. CHEF'S KITCHEN



OPT. CHEF'S KITCHEN AT SUNROOM



OPT. BATH 3 AT BED 4



THIS PLAN'S PROJECTED **HERS® INDEX = 51** \*  
 Projected Rating Based on Plans – Field Confirmation required

**How does this floor plan rate?**  
 Take a look: **100** = Standard new home+ **130** = Typical resale Home++  
 The lower number, the better! Refer to the RESNET® HERS index brochure or go to [www.RESNET.us](http://www.RESNET.us) and [www.HERSindex.com](http://www.HERSindex.com)

**What's a HERS® Index?** HERS stands for Home Energy Rating System, a system created by RESNET® to measure home energy efficiency. ^  
 A Projected HERS index or rating is a computer simulation performed prior to construction by a third-party HERS rater using RESNET-accredited rating software, rated feature and specification data derived from home plans, features and specifications, and other data selected or assumed by the rater. The projected HERS index is approximate and is subject to change without notice. Actual results will vary.