

THE CORAL

Approx. 1,830 sq. ft. | 3 to 4 bed | 2.5 bath | 3-car garage | Plan #D903

CRAWL SPACE

w/ Opt. Covered Patio

CRAWL SPACE

UNEXCAVATED

COMMUNITY LOCATION:

Seasons at Hunters Crossing | 1230 Argali Drive | Severance, CO 80550 | 970.347.5805

DESIGN CENTER LOCATION:

HG2 by Richmond American[™] | 8000 E. Belview Avenue, Suite D-30 | Greenwood Village, CO 80111 | 888.402.4663



Floor plans and renderings are conceptual drawings and may vary from actual plans and homes as built. Options and features may not be available on all homes and are subject to change without notice. Actual homes may vary from photos and/or drawings which show upgraded landscaping and may not represent the lowest-priced homes in the community. Features may include optional upgrades and may not be available on all homes. Prices, specifications and availability are subject to change without notice. Square footage is approximate and subject to change without notice. ©2022 Richmond American Homes, Richmond American Homes of Colorado, Inc. 06/02/2022



ELEVATION C

ABOUT THE CORAL

The main floor of this delightful plan offers a large, uninterrupted space for relaxing, entertaining and dining. The kitchen features a large center island with seating and opens to the dining and great rooms. Upstairs, there's a large loft, a full bath tucked between two inviting bedrooms, and a private owner's suite with walk-in closet and convenient owner's bath. Options include a covered patio and a bedroom in lieu of the loft.

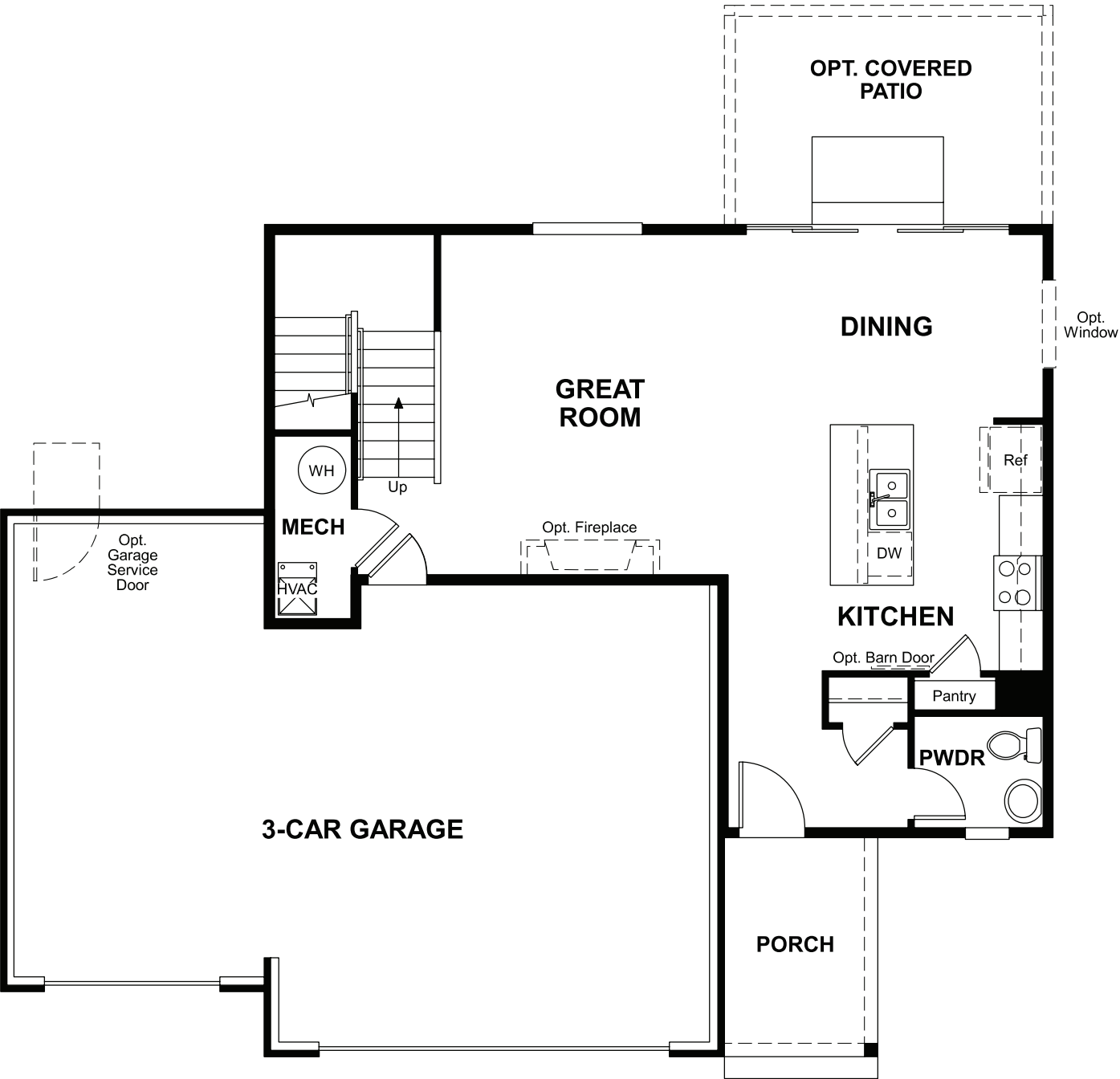


ELEVATION A



ELEVATION B

MAIN FLOOR



SECOND FLOOR

