

SKYVIEW AT TERRAMOR

# THE WALNUT DUO

Approx. 2,000 sq. ft. | 2 stories | 3-4 bedrooms | 2-car garage | Plan #S948



ELEVATION C - Shown with Citrine Duo

## ABOUT THE WALNUT DUO

The attractive two-story Walnut Duo plan boasts an open, inviting layout. On the main level, a well-appointed kitchen with a walk-in pantry and center island overlooks a dining nook and airy great room. A convenient mudroom and powder room are adjacent. Upstairs, you'll find a central laundry, an inviting primary suite with an oversized walk-in closet and private bath, and an additional bedroom and bathroom. This home will be built with either a loft or a fourth bedroom, and a covered patio may be included. Our designers has perfected this plan with carefully curated finishes!

### COMMUNITY LOCATION:

Skyview at Terramor | 24074 Hillcrest Drive | Corona, CA 92883 | **951.846.6408**

### HOME GALLERY LOCATION:

Southern California Home Gallery™ | 5171 California Avenue, Suite 110 | Irvine, CA 92617 | **909.579.3288**

\*This information is presented for education purposes only. The HERS index for a confirmed rating will be determined by a third-party HERS rater based on data gathered from on-site observations and, if required, testing of rated features for a home as featured, optioned, located, oriented and/or built.

+Standard new home is based on the RESNET® Reference Home definition with a HERS® index of 100 (based on the 2006 International Energy Conservation Code).

++Typical resale home is based on the U.S. Department of Energy definition with a HERS® index of 130.

^RESNET® has developed the HERS® index to indicate the comparative efficiencies of homes. It is no guarantee that energy efficiencies will be achieved.

Floor plans and renderings are conceptual drawings and may vary from actual plans and homes as built. Options and features may not be available on all homes and are subject to change without notice. Actual homes may vary from photos and/or drawings which show upgraded landscaping and may not represent the lowest-priced homes in the community. Features may include optional upgrades and may not be available on all homes. Square footage numbers are approximate and are subject to change without notice. ©2023 Richmond American Homes, Richmond American Homes of Maryland, Inc., California Department of Real Estate – Real Estate Broker, Corporation License Number 01842595. 8/28/2023

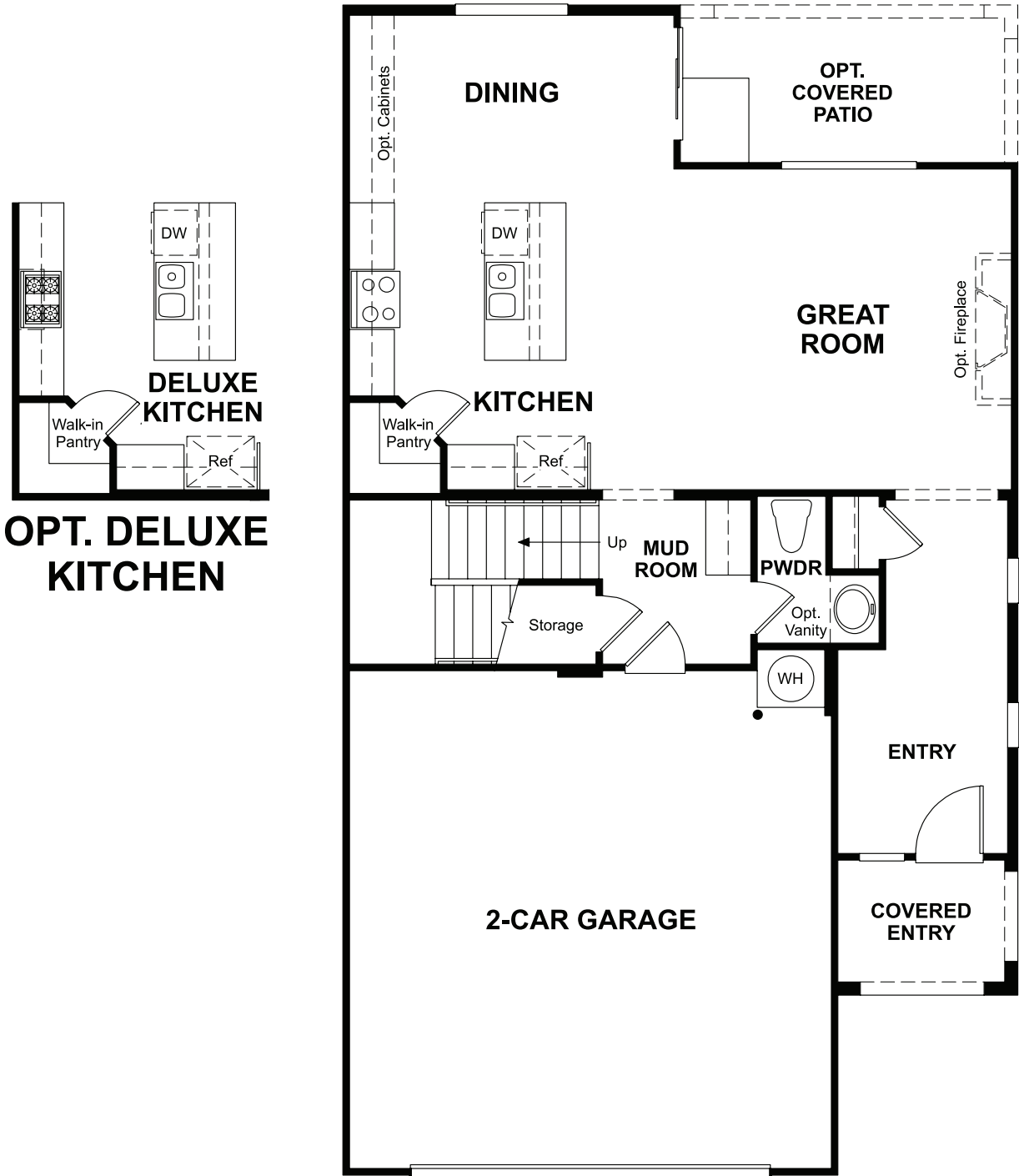


ELEVATION A - Shown with Citrine Duo

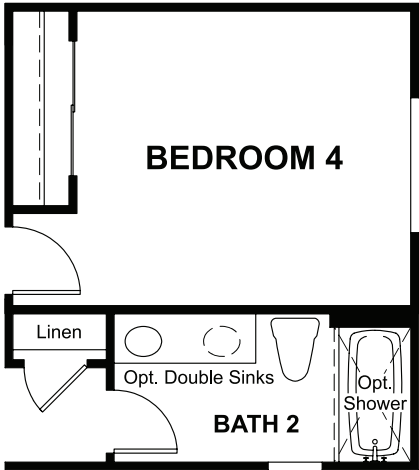
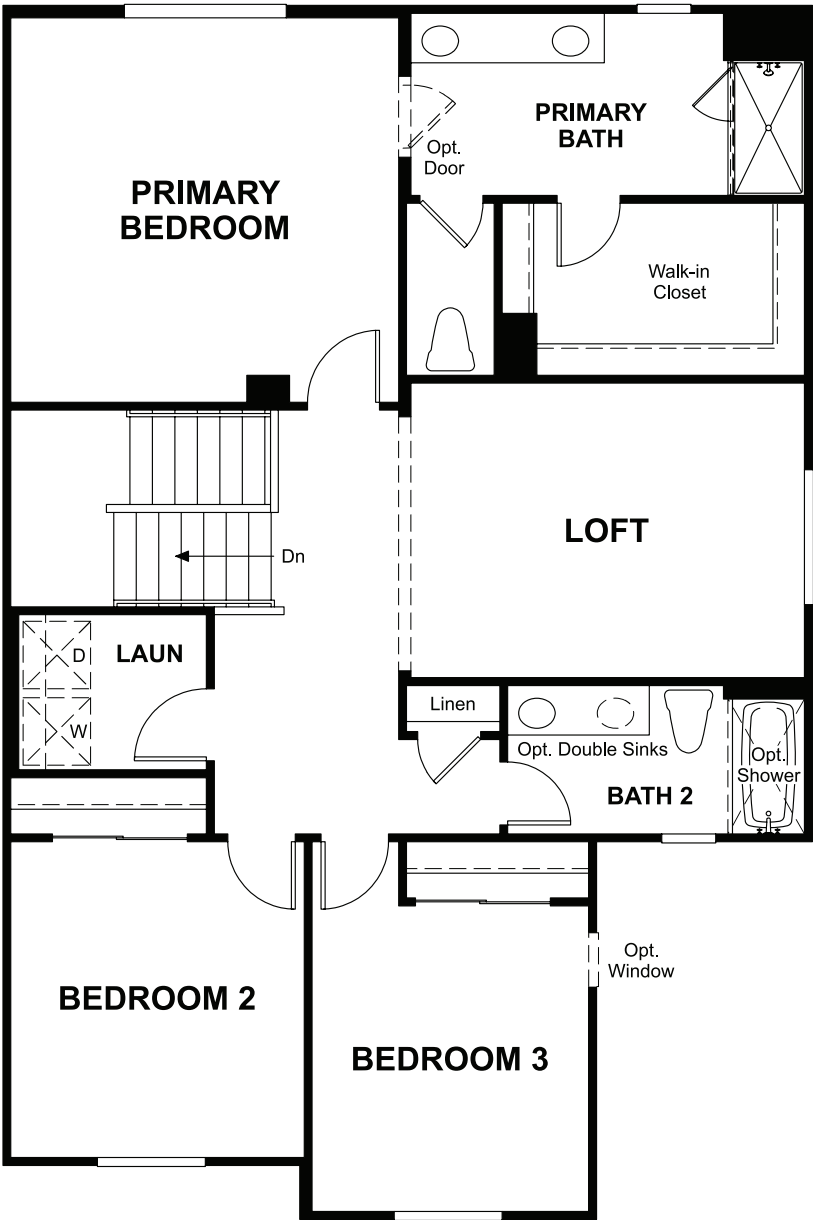


ELEVATION B - Shown with Citrine Duo

MAIN FLOOR



SECOND FLOOR



OPT. BEDROOM 4

THIS PLAN'S PROJECTED  
**HERS® INDEX = 21** \*

**How does this floor plan rate?**  
Take a look: **100** = Standard new home+ **130** = Typical resale Home++  
The lower number, the better! Refer to the RESNET® HERS index brochure or go to [www.RESNET.us](http://www.RESNET.us) and [www.HERSindex.com](http://www.HERSindex.com)

**What's a HERS® Index?** HERS stands for Home Energy Rating System, a system created by RESNET® to measure home energy efficiency.^  
A Projected HERS index or rating is a computer simulation performed prior to construction by a third-party HERS rater using RESNET-accredited rating software, rated feature and specification data derived from home plans, features and specifications, and other data selected or assumed by the rater. The projected HERS index is approximate and is subject to change without notice. Actual results will vary.