

THE PAIGE

Approx. 2,490 sq. ft. | 3 to 5 bed | 2.5 to 4 bath | 2-car garage | Plan #S24P



ELEVATION C

ABOUT THE PAIGE

The spacious Paige plan offers ample room for rest, play and work. At the heart of the home, an open layout showcases a dining area, an airy great room and an impressive kitchen that can be personalized with deluxe or gourmet features. An adjacent owner's suite features a walk-in closet and a luxurious private bath with optional deluxe features or a walk-in shower. You'll find two additional bedrooms at the front of the home, as well as a study that can be optioned as a fourth bedroom. A 2-car garage with a third tandem parking space is also included. Additional options: a fifth bedroom and fourth bath in lieu of the third garage bay, a formal dining room in place of the study and two covered patio layouts.

COMMUNITY LOCATION:

Bridle Path at Paradise Knolls | 6272 Persano Street | Jurupa Valley, CA 92509 | **951.226.0807**

DESIGN CENTER LOCATION:

Southern California Home Gallery™ | 5171 California Avenue, Suite 110 | Irvine, CA 92617 | **909.579.3288**

\*This information is presented for educational purposes only. The HERS® index for a confirmed rating will be determined by a third-party HERS rater based on data gathered from on-site observations and, if required, testing of rated features for a home as featured, optioned, located, oriented and/or built.

\*\*Standard new home is based on the RESNET® Reference Home definition with a HERS index of 100 (based on the 2006 International Energy Conservation Code).

\*\*\*Typical resale home is based on the U.S. Department of Energy definition with a HERS index of 130.

^RESNET has developed the HERS index to indicate the comparative efficiencies of homes. It is no guarantee that energy efficiencies will be achieved.

Floor plans and renderings are conceptual drawings and may vary from actual plans and homes as built. Options and features may not be available on all homes and are subject to change without notice. Actual homes may vary from photos and/or drawings which show upgraded landscaping and may not represent the lowest-priced homes in the community. Features may include optional upgrades and may not be available on all homes. Prices, specifications and availability are subject to change without notice. Square footage is approximate and subject to change without notice. ©2021 Richmond American Homes, Richmond American Homes of Maryland, Inc., California Department of Real Estate – Real Estate Broker, Corporation License Number 01842595. 9/21/2021



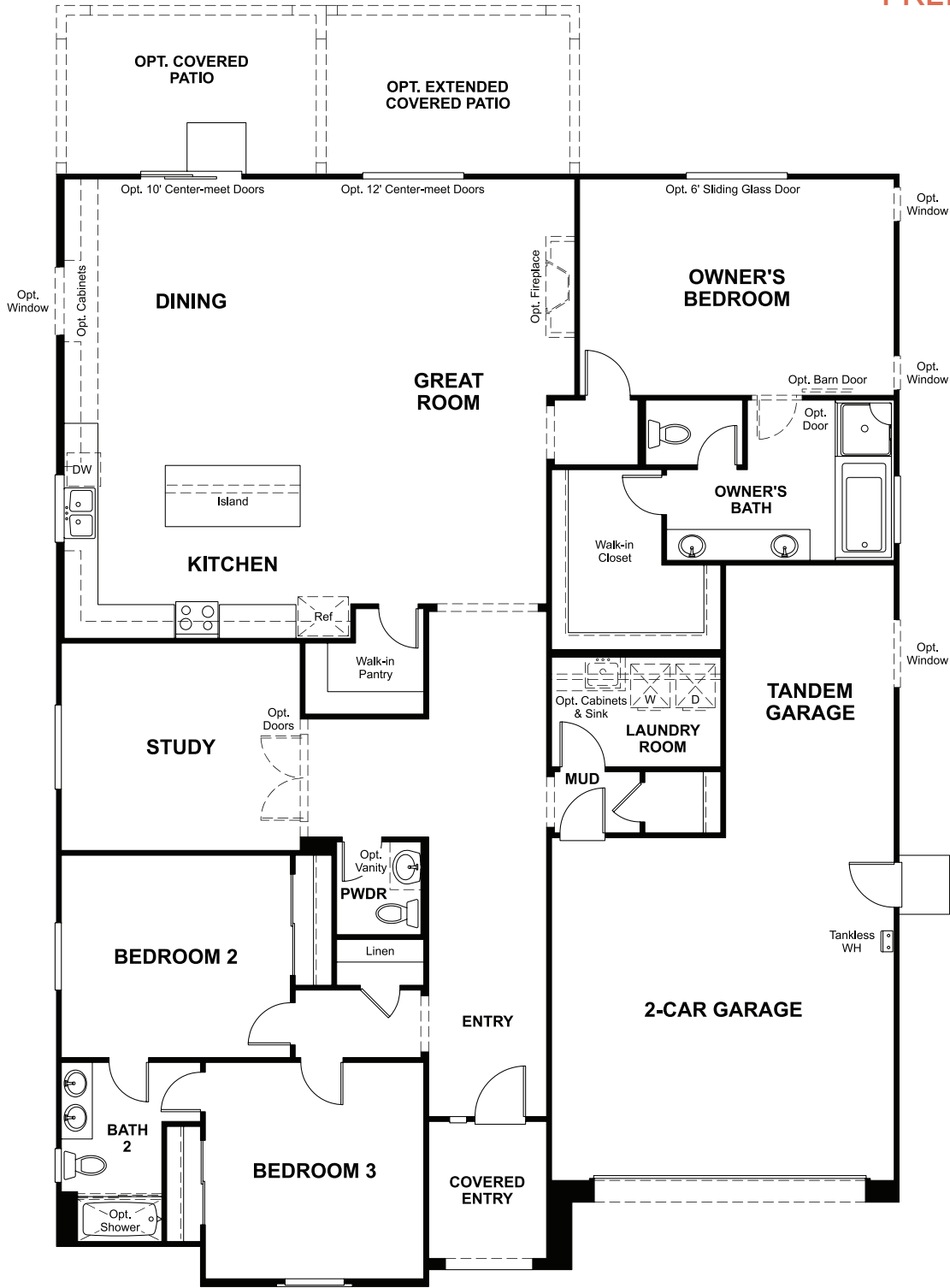
ELEVATION A



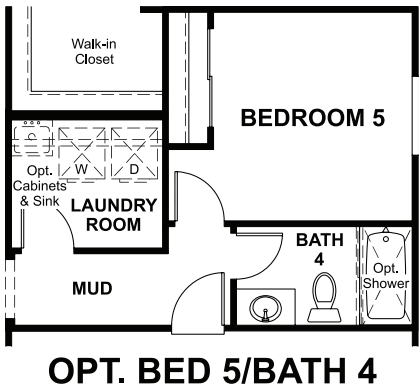
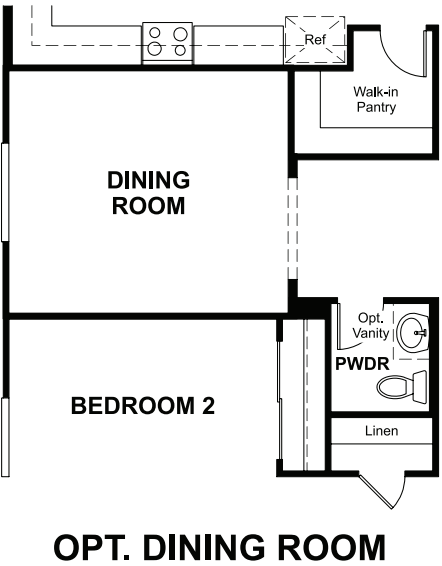
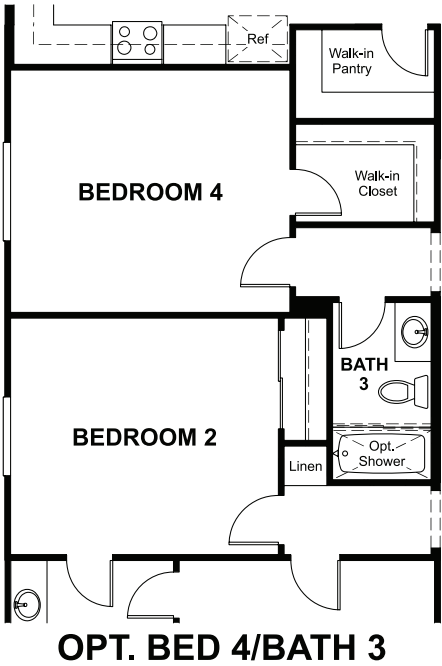
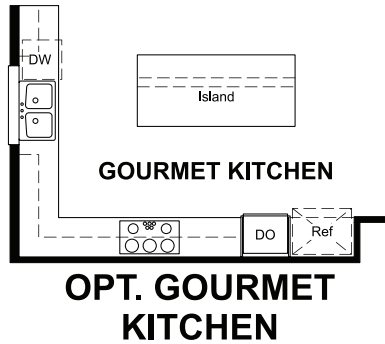
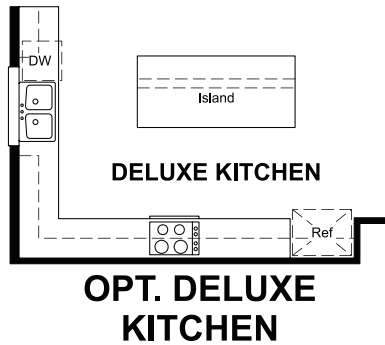
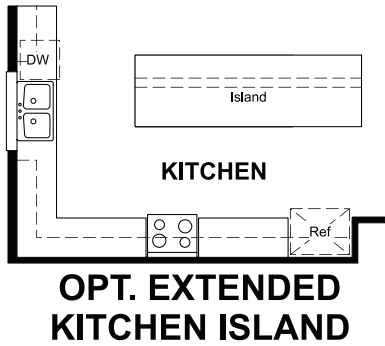
ELEVATION B



MAIN FLOOR  
PRELIMINARY



MAIN-FLOOR OPTIONS  
PRELIMINARY



THIS PLAN'S PROJECTED  
**HERS® INDEX = 23\***  
Projected rating based on plans – field confirmation required

**How does this floor plan rate?**  
Take a look: **100** = standard new home™ **130** = typical resale home™  
The lower the number, the better! Refer to the RESNET® HERS index brochure  
or go to **RESNET.us** and **HERSindex.com**

**What's a HERS® index?** HERS stands for Home Energy Rating System, a system created by RESNET® to measure home energy efficiency.^  
A projected HERS index or rating is a computer simulation performed prior to construction by a third-party HERS rater using RESNET-accredited rating software, rated feature and specification data derived from home plans, features and specifications, and other data selected or assumed by the rater. The projected HERS index is approximate and is subject to change without notice. Actual results will vary.