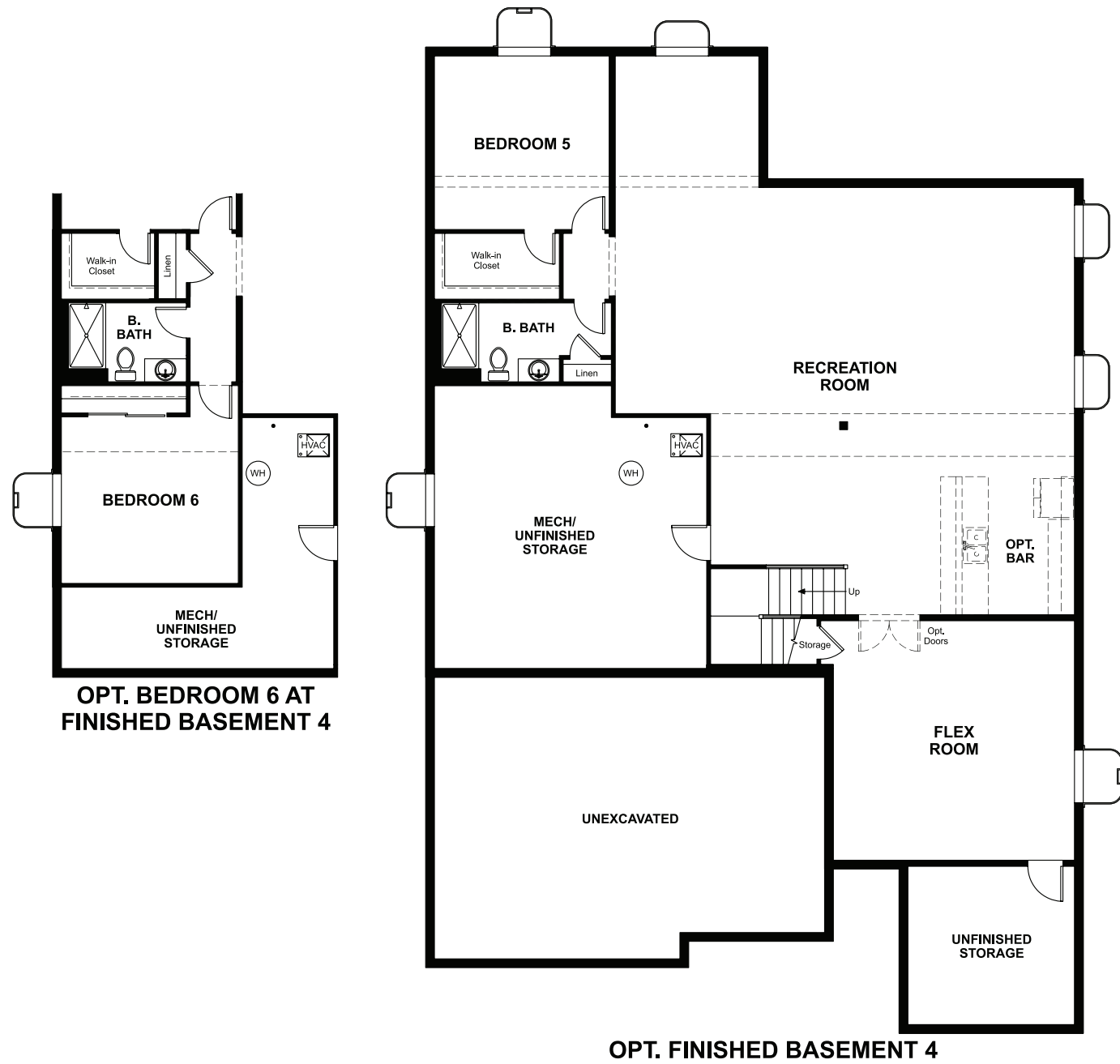


BASEMENT



ELEVATION C

ABOUT THE POWELL

The open, inviting layout of the ranch-style Powell plan makes entertaining easy. Inside, you'll find a great room, a generous dining room and a well-appointed kitchen featuring a center island and a large walk-in pantry. An elegant owner's suite boasts a private bath with double sinks and an oversized walk-in closet, and two secondary bedrooms offer ample space for family and guests. You'll also appreciate a study, laundry, mudroom, powder room and two additional bathrooms. A relaxing covered patio and 3-car garage complete the residence. Make this home your own with a fourth bedroom in lieu of the study or a guest suite in place of the study and third bedroom, a deluxe owner's bath and a finished basement!



ELEVATION A



ELEVATION B

COMMUNITY LOCATION:

The Gallery at Reunion | 10997 Ouray Street | Commerce City, CO 80022 | 303.289.1853

DESIGN CENTER LOCATION:

Denver Metro Home Gallery™ | 8000 E. Belleview Avenue, Suite C-12 | Greenwood Village, CO 80111 | 888.402.4663



Floor plans and renderings are conceptual drawings and may vary from actual plans and homes as built. Options and features may not be available on all homes and are subject to change without notice. Actual homes may vary from photos and/or drawings which show upgraded landscaping and may not represent the lowest-priced homes in the community. Features may include optional upgrades and may not be available on all homes. Prices, specifications and availability are subject to change without notice. Square footage is approximate and subject to change without notice. ©2022 Richmond American Homes, Richmond American Homes of Colorado, Inc. 1/20/2022

MAIN FLOOR

MAIN-FLOOR OPTIONS

