



ELEVATION D

ABOUT THE PARDUE

The two-story Pardue boasts broad appeal, offering a sought-after open layout on the main floor. An airy great room with an optional fireplace is at the heart of the home, steps from a dining room and a well-appointed kitchen with an island and a walk-in pantry. Opt for an extended island and gourmet or deluxe kitchen features and whip up some culinary wizardry! You'll also find a study and storage space that can be personalized as a fourth bedroom and a bath. There are three generous bedrooms upstairs, including a spacious owner's suite boasting dual walk-in closets and a private bath with two deluxe options. An adjacent loft space can be personalized as a fifth bed and fourth bath. Options also include 10' center-meet doors, 12' multi-slide doors and a covered patio.

COMMUNITY LOCATION:

Harvest at Spring Lake | 1705 Goode Drive | Woodland, CA 95776 | **530.491.7103**

DESIGN CENTER LOCATION:

Northern California Home Gallery™ | One Harbor Center, Suite 150 | Suisun City, CA 94585 | **707.416.2800**

\*This information is presented for educational purposes only. The HERS® index for a confirmed rating will be determined by a third-party HERS rater based on data gathered from on-site observations and, if required, testing of rated features for a home as featured, optioned, located, oriented and/or built.

\*\*Standard new home is based on the RESNET® Reference Home definition with a HERS index of 100 (based on the 2006 International Energy Conservation Code).

\*\*\*Typical resale home is based on the U.S. Department of Energy definition with a HERS index of 130.

^RESNET has developed the HERS index to indicate the comparative efficiencies of homes. It is no guarantee that energy efficiencies will be achieved.

Floor plans and renderings are conceptual drawings and may vary from actual plans and homes as built. Options and features may not be available on all homes and are subject to change without notice. Actual homes may vary from photos and/or drawings which show upgraded landscaping and may not represent the lowest-priced homes in the community. Features may include optional upgrades and may not be available on all homes. Prices, specifications and availability are subject to change without notice. Square footage is approximate and subject to change without notice. ©2022 Richmond American Homes, Richmond American Homes of Maryland, Inc., California Department of Real Estate – Real Estate Broker, Corporation License Number 01842595. 02/28/2022



ELEVATION A

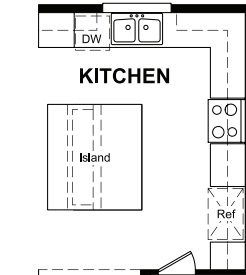


ELEVATION B

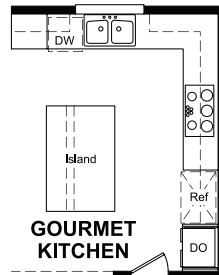


ELEVATION C

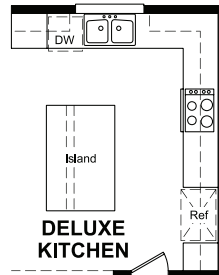
# PRELIMINARY



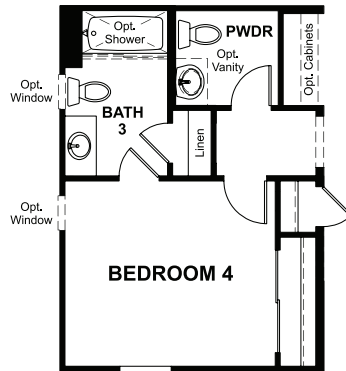
**OPT. EXTENDED  
KITCHEN ISLAND**



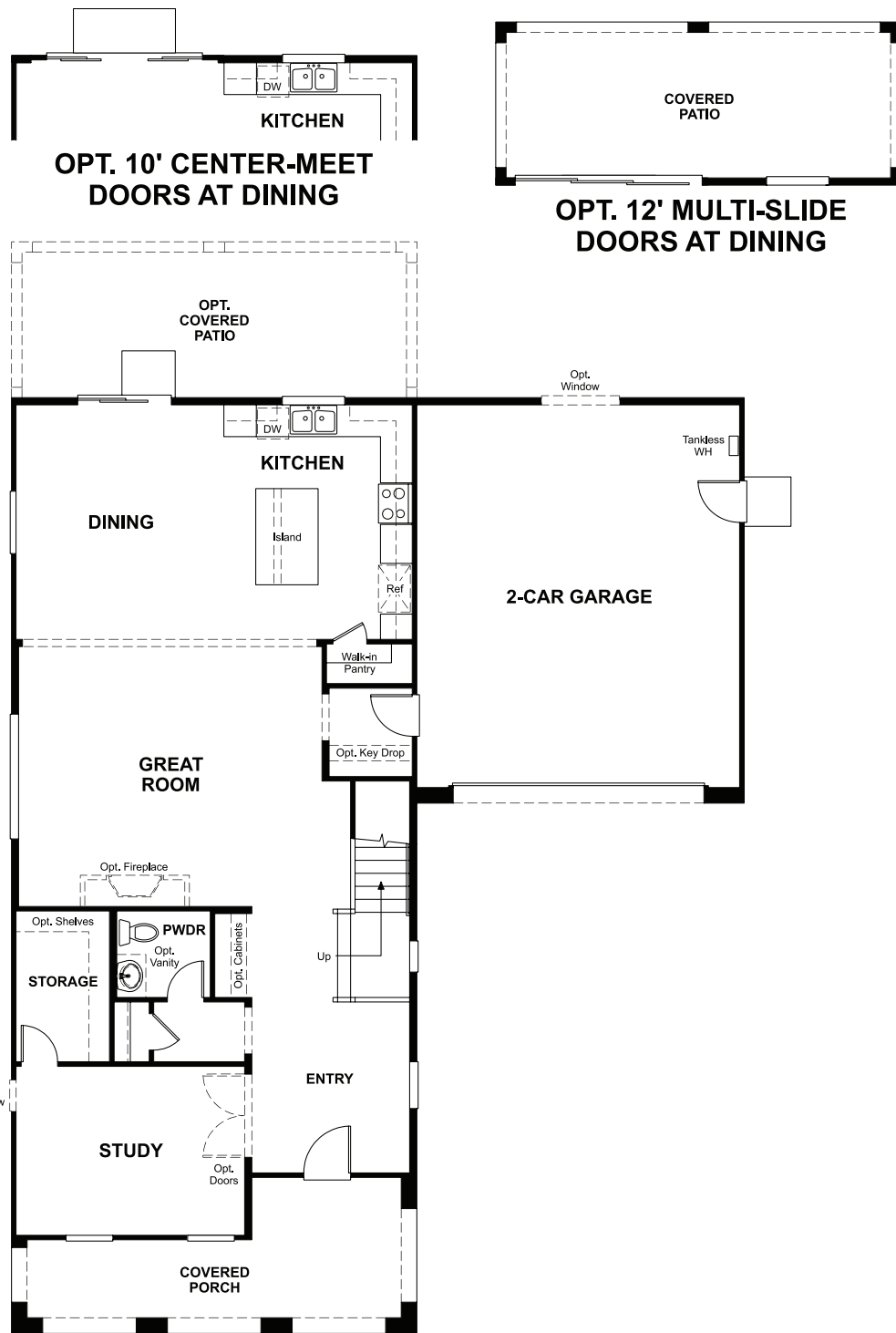
**OPT. GOURMET  
KITCHEN**



**OPT. DELUXE  
KITCHEN**



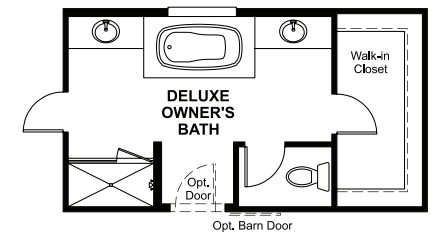
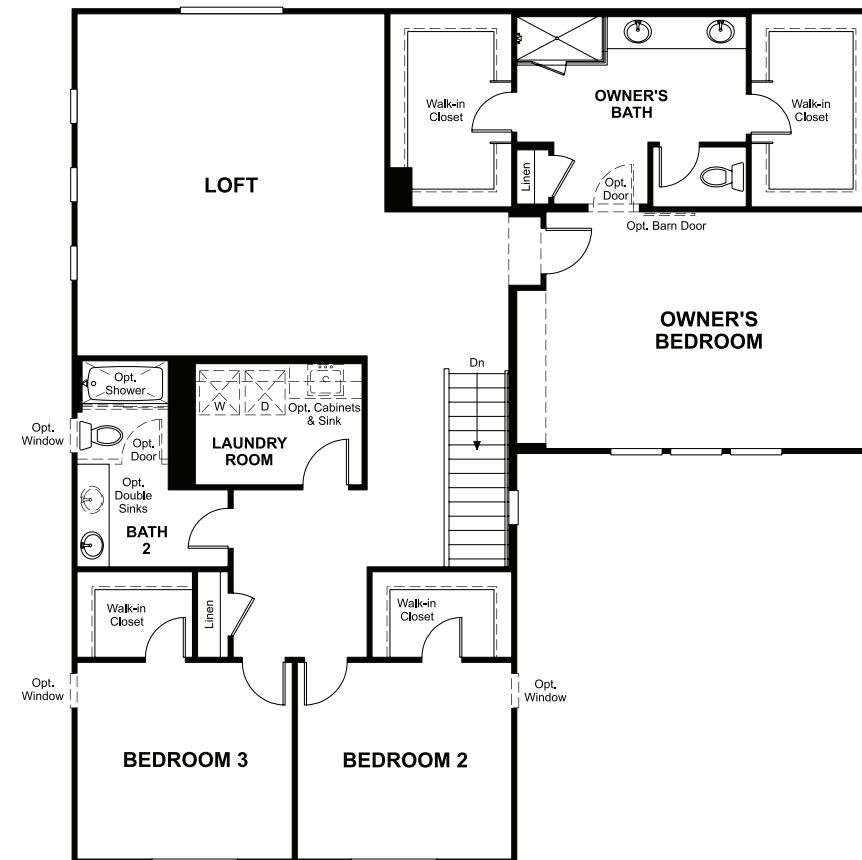
**OPT. BED 4/BATH 3**



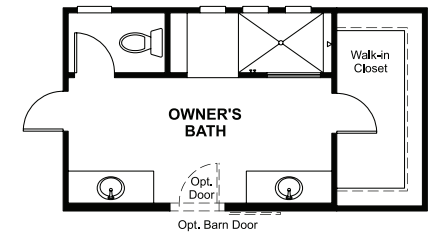
SECOND FLOOR  
PRELIMINARY



**OPT. BED 5/BATH 4**



### OPT. DELUXE OWNER'S BATH



**OPT. WALK-IN SHOWER  
AT OWNER'S BATH**

THIS PLAN'S PROJECTED  
**HERS® INDEX = 30\***  
Projected rating based on plans – field confirmation required

### How does this floor plan rate?

Take a look: **100** = standard new home™ **130** = typical resale home™  
The lower the number, the better! Refer to the RESNET® HERS index brochure  
or go to **RESNET.us** and **HERSindex.com**

**What's a HERS® index?** HERS stands for Home Energy Rating System, a system created by RESNET® to measure home energy efficiency.<sup>^</sup>

A projected HERS index or rating is a computer simulation performed prior to construction by a third-party HERS rater using RESNET-accredited rating software, rated feature and specification data derived from home plans, features and specifications, and other data selected or assumed by the rater. The projected HERS index is approximate and is subject to change without notice. Actual results will vary.