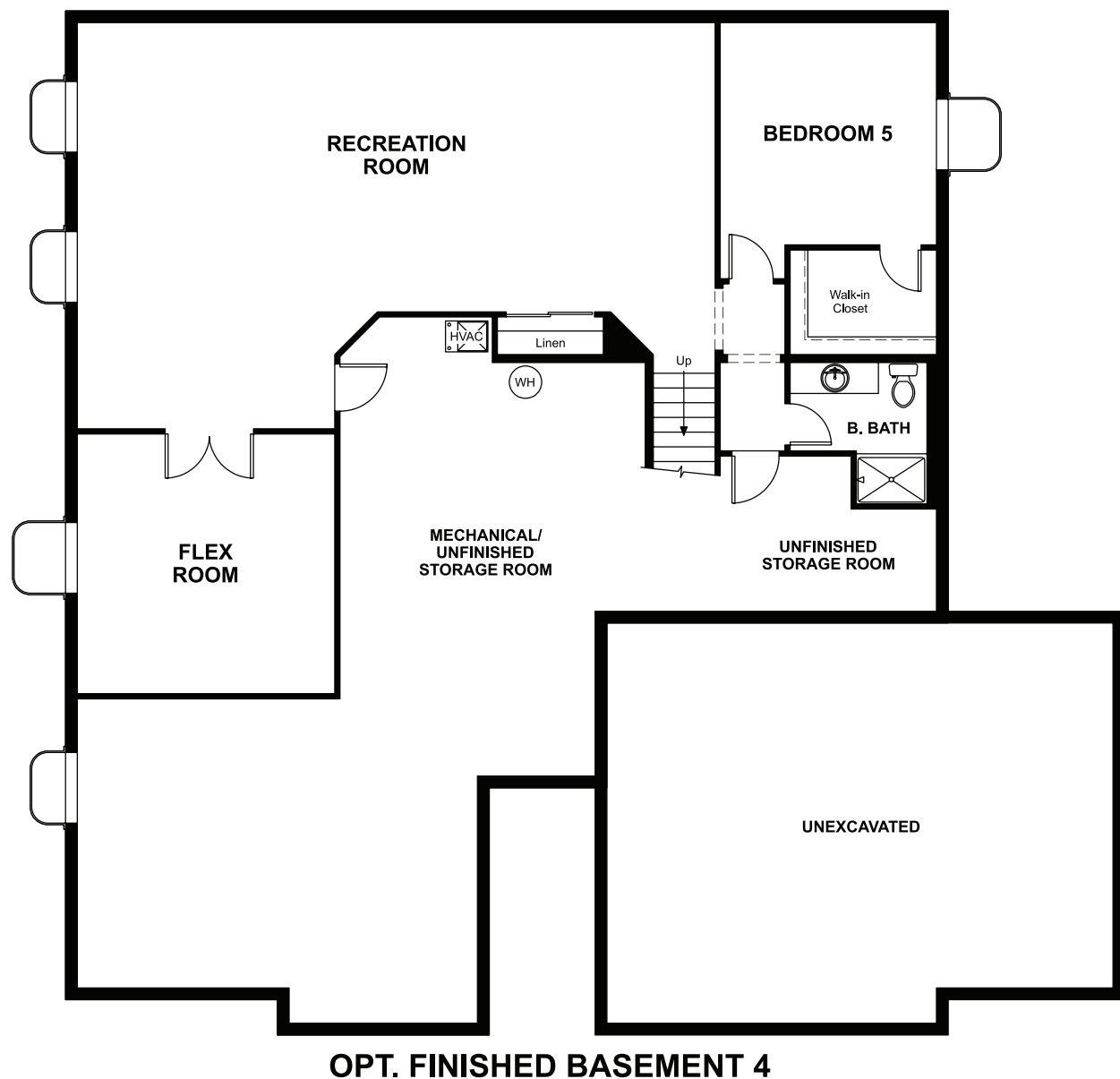


BASEMENT



ELEVATION G

ABOUT THE DANIEL

A shady covered porch welcomes guests to the Daniel. This stylish ranch plan features an expansive great room and dining room combination area that's perfect for entertaining. A private study with double doors and a luxurious owner's bedroom with walk-in closet and an optional deluxe owner's bath provide space for work or relaxation. A full unfinished basement is included.

COMMUNITY LOCATION:

Oak Ridge at Crystal Valley | 4124 River Oaks Street | Castle Rock, CO 80104 | 303.620.5363

DESIGN CENTER LOCATION:

Denver Metro Home Gallery™ | 8000 E. Belleview Avenue, Suite C-12 | Greenwood Village, CO 80111 | 888.402.4663




ELEVATION D



ELEVATION E



ELEVATION F

 Floor plans and renderings are conceptual drawings and may vary from actual plans and homes as built. Options and features may not be available on all homes and are subject to change without notice. Actual homes may vary from photos and/or drawings which show upgraded landscaping and may not represent the lowest-priced homes in the community. Features may include optional upgrades and may not be available on all homes. Prices, specifications and availability are subject to change without notice. Square footage is approximate and subject to change without notice. ©2021 Richmond American Homes, Richmond American Homes of Colorado, Inc. 6/9/2021

MAIN FLOOR

MAIN-FLOOR OPTIONS

