



ELEVATION D

ABOUT THE HOLBROOK

Seeking a single-story home designed with ease and elegance in mind? Add the Holbrook to your list! Boasting an open layout that is ideal for entertaining, this popular floor plan is centered around an inviting great room, a breakfast nook and a well-appointed kitchen with butler and walk-in pantries and a prep island. Add gourmet or deluxe features and fuel your culinary creativity! The luxurious primary suite is adjacent, offering dual walk-in closets and a private bath that can be optioned with deluxe features or a walk-in shower. Two additional bedrooms and a bath round out the plan. Highlights include a formal dining room, a study that can be personalized as a fourth bedroom, a covered patio with an extended option and a 3-car garage.

COMMUNITY LOCATION:

Noble at Audie Murphy Ranch | 24393 Arroyo Drive | Menifee, CA 92587 | 951.226.3993

DESIGN CENTER LOCATION:

Southern California Home Gallery™ | 5171 California Avenue, Suite 110 | Irvine, CA 92617 | 909.579.3300

*This information is presented for educational purposes only. The HERS® index for a confirmed rating will be determined by a third-party HERS rater based on data gathered from on-site observations and, if required, testing of rated features for a home as featured, optioned, located, oriented and/or built.

**Standard new home is based on the RESNET® Reference Home definition with a HERS index of 100 (based on the 2006 International Energy Conservation Code).

***Typical resale home is based on the U.S. Department of Energy definition with a HERS index of 130.

^RESNET has developed the HERS index to indicate the comparative efficiencies of homes. It is no guarantee that energy efficiencies will be achieved.

Floor plans and renderings are conceptual drawings and may vary from actual plans and homes as built. Options and features may not be available on all homes and are subject to change without notice. Actual homes may vary from photos and/or drawings which show upgraded landscaping and may not represent the lowest-priced homes in the community. Features may include optional upgrades and may not be available on all homes. Prices, specifications and availability are subject to change without notice. Square footage is approximate and subject to change without notice. ©2023 Richmond American Homes, Richmond American Homes of Maryland, Inc., California Department of Real Estate – Real Estate Broker, Corporation License Number 01842595. 08/14/2023



ELEVATION A



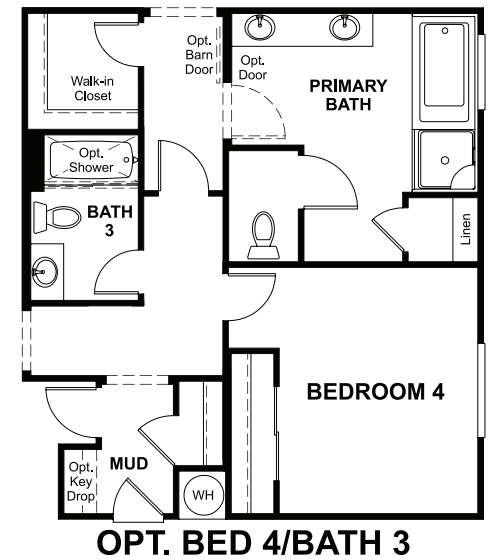
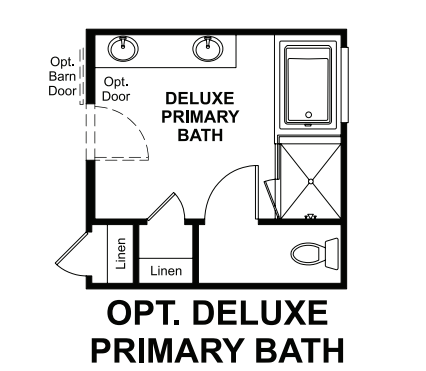
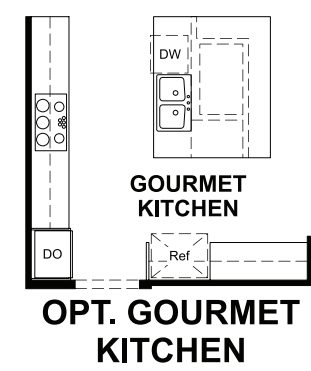
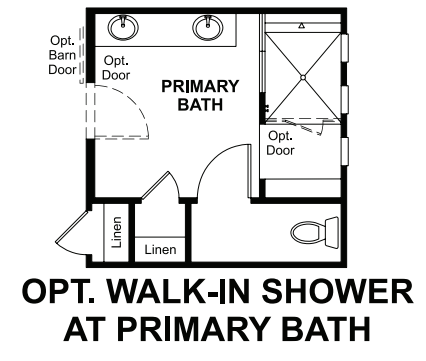
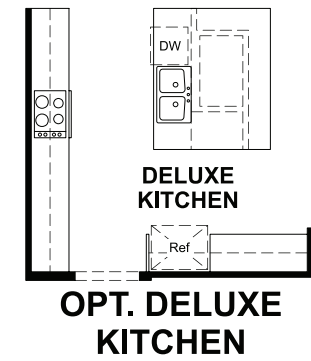
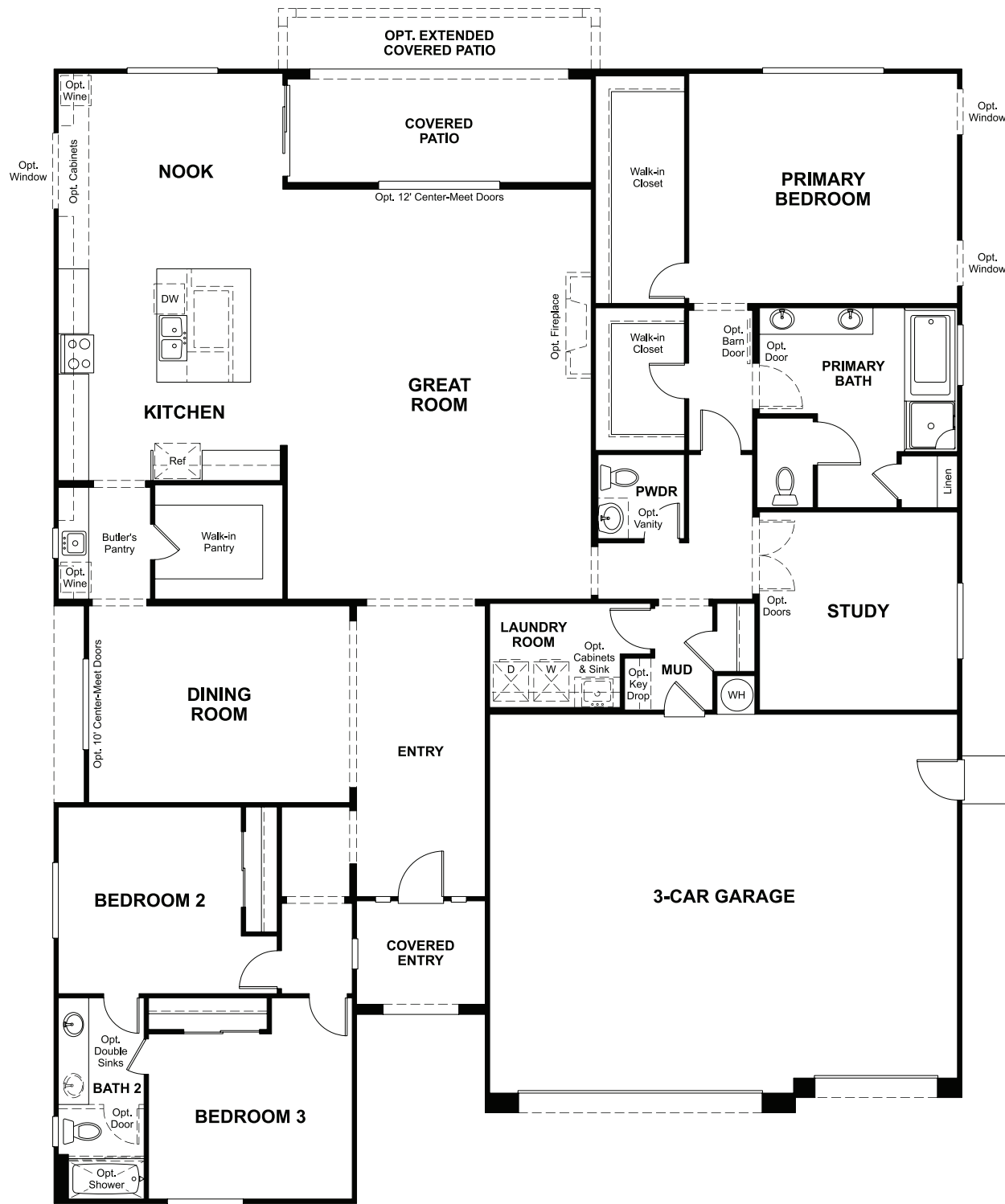
ELEVATION B



ELEVATION C

MAIN FLOOR

MAIN-FLOOR OPTIONS



THIS PLAN'S PROJECTED **HERS® INDEX = 31** *
 Projected rating based on plans – field confirmation required

How does this floor plan rate?
 Take a look: **100** = standard new home™ **130** = typical resale home™
 The lower the number, the better! Refer to the RESNET® HERS index brochure or go to RESNET.us and HERSindex.com

What's a HERS® index? HERS stands for Home Energy Rating System, a system created by RESNET® to measure home energy efficiency. ^
 A projected HERS index or rating is a computer simulation performed prior to construction by a third-party HERS rater using RESNET-accredited rating software, rated feature and specification data derived from home plans, features and specifications, and other data selected or assumed by the rater. The projected HERS index is approximate and is subject to change without notice. Actual results will vary.