



ELEVATION R

ABOUT THE BEDFORD

The beautiful Bedford plan offers two stories of smartly designed living space. The main floor features an inviting great room with a fireplace and a gourmet kitchen boasting a double oven, center island and adjacent sunroom. You'll also appreciate a powder room, a mudroom and a convenient pocket office. Upstairs, you'll find a central laundry, a large loft, a full bath and three generous bedrooms, including a lavish owner's suite showcasing an immense walk-in closet and private bath with optional walk-in shower. Make this home your own with an array of options, including a fourth bedroom in lieu of the loft, a deluxe owner's bath and a relaxing covered patio.

COMMUNITY LOCATION:

Tehaleh | 18678 Edmunds Lane East | Bonney Lake, WA 98391 | 253.693.4804

DESIGN CENTER LOCATION:

Washington Home Gallery™ | 20829 72nd Avenue South, Suite 115 | Kent, WA 98032 | 253.446.7277

*This information is presented for educational purposes only. The HERS® index for a confirmed rating will be determined by a third-party HERS rater based on data gathered from on-site observations and, if required, testing of rated features for a home as featured, optioned, located, oriented and/or built.

**Standard new home is based on the RESNET® Reference Home definition with a HERS index of 100 (based on the 2006 International Energy Conservation Code).

***Typical resale home is based on the U.S. Department of Energy definition with a HERS index of 130.

^RESNET has developed the HERS index to indicate the comparative efficiencies of homes. It is no guarantee that energy efficiencies will be achieved.

Floor plans and renderings are conceptual drawings and may vary from actual plans and homes as built. Options and features may not be available on all homes and are subject to change without notice. Actual homes may vary from photos and/or drawings which show upgraded landscaping and may not represent the lowest-priced homes in the community. Features may include optional upgrades and may not be available on all homes. Prices, specifications and availability are subject to change without notice. ©2021 Richmond American Homes, Richmond American Homes of Washington, Inc. 7/7/2021

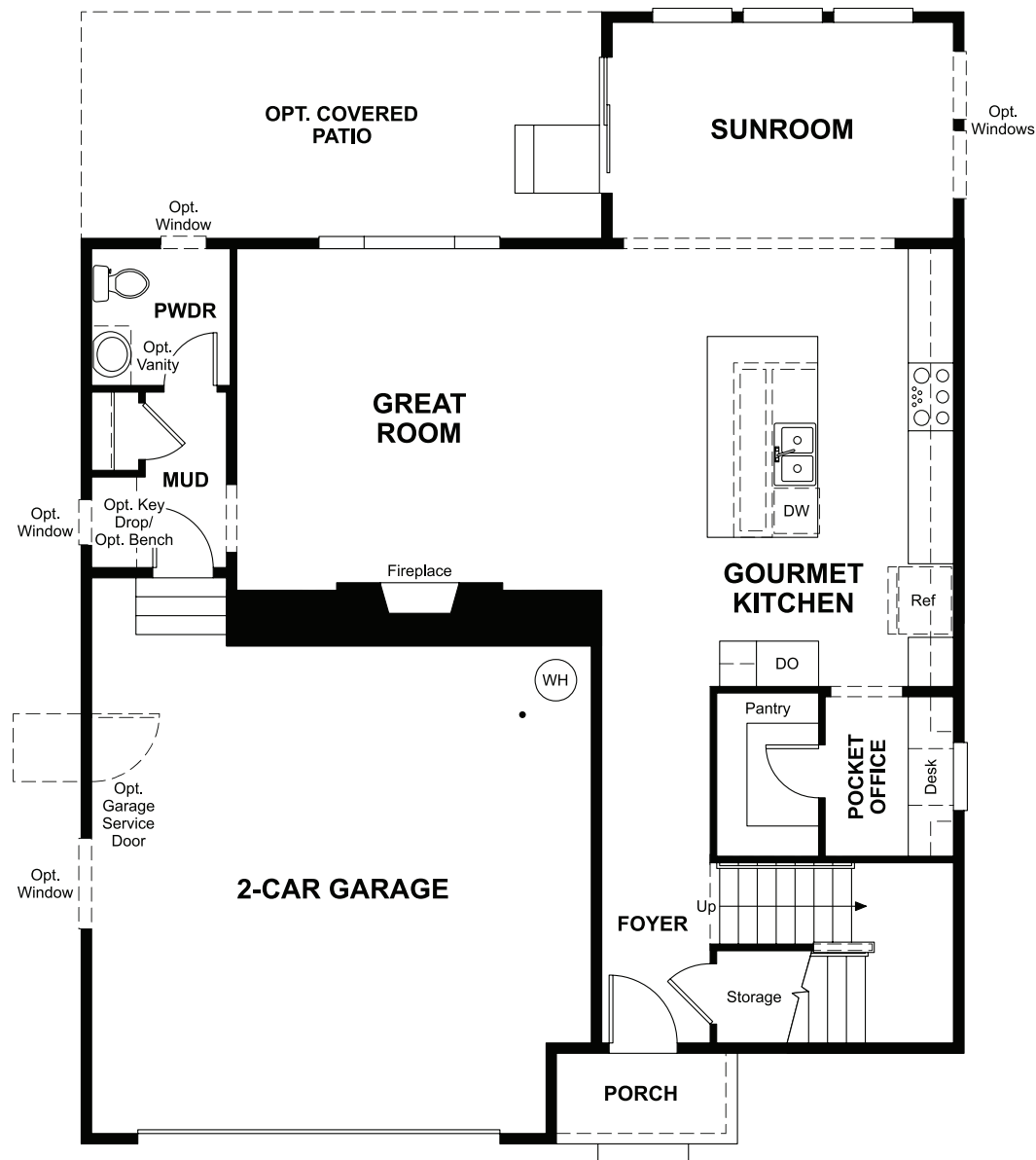


ELEVATION P



ELEVATION Q

MAIN FLOOR



SECOND FLOOR



THIS PLAN'S PROJECTED
HERS® INDEX = 48*
Projected rating based on plans – field confirmation required

How does this floor plan rate?
Take a look: **100** = standard new home™ **130** = typical resale home™
The lower the number, the better! Refer to the RESNET® HERS index brochure
or go to RESNET.us and HERSindex.com

What's a HERS® index? HERS stands for Home Energy Rating System, a system created by RESNET® to measure home energy efficiency. ^
A projected HERS index or rating is a computer simulation performed prior to construction by a third-party HERS rater using RESNET-accredited rating software, rated feature and specification data derived from home plans, features and specifications, and other data selected or assumed by the rater. The projected HERS index is approximate and is subject to change without notice. Actual results will vary.