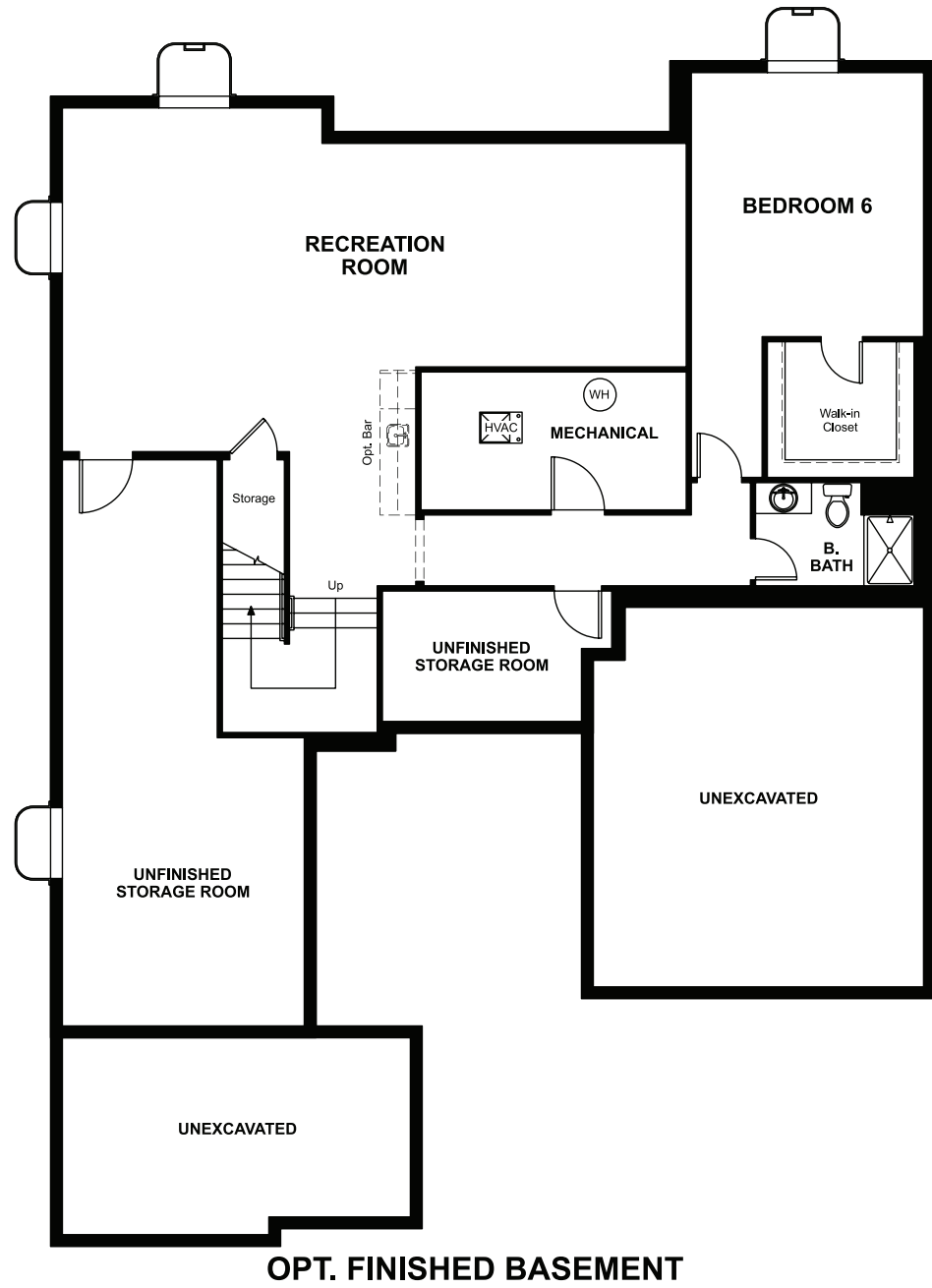


BASEMENT



ELEVATION C

ABOUT THE JASMINE

Front- and side-entry garages and a welcoming front porch give the Jasmine plan ample curb appeal. The main floor is designed for entertaining, boasting a powder room, a formal dining room and an expansive great room that flows into a large kitchen, complete with island and breakfast nook. Other highlights include a mudroom with an adjacent pantry and a suite composed of a bedroom, bathroom, laundry and living room—perfect for guests or multigenerational living! Upstairs, you'll find a laundry, three bedrooms with a shared bath and an elegant owner's suite showcasing a private bath, oversized walk-in closet and adjacent sitting room, which can be optioned as a loft. Additional options include two deluxe owner's bath layouts, a finished basement and a covered patio.



ELEVATION A



ELEVATION B

COMMUNITY LOCATION:

Oak Ridge at Crystal Valley | 4124 River Oaks Street | Castle Rock, CO 80104 | 303.620.5363

DESIGN CENTER LOCATION:

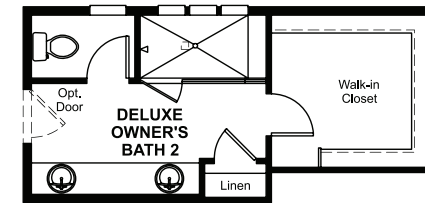
Denver Metro Home Gallery™ | 8000 E. Belleview Avenue, Suite C-12 | Greenwood Village, CO 80111 | 888.402.4663



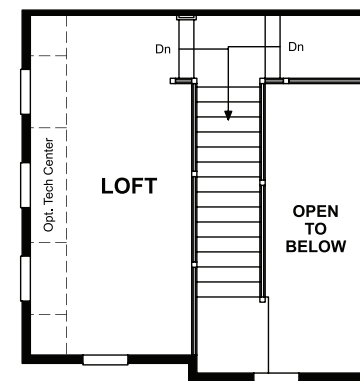
Floor plans and renderings are conceptual drawings and may vary from actual plans and homes as built. Options and features may not be available on all homes and are subject to change without notice. Actual homes may vary from photos and/or drawings which show upgraded landscaping and may not represent the lowest-priced homes in the community. Features may include optional upgrades and may not be available on all homes. Prices, specifications and availability are subject to change without notice. Square footage is approximate and subject to change without notice. ©2021 Richmond American Homes, Richmond American Homes of Colorado, Inc. 6/9/2021

MAIN FLOOR

SECOND FLOOR



OPT. DELUXE OWNER'S BATH 2



OPT. LOFT

