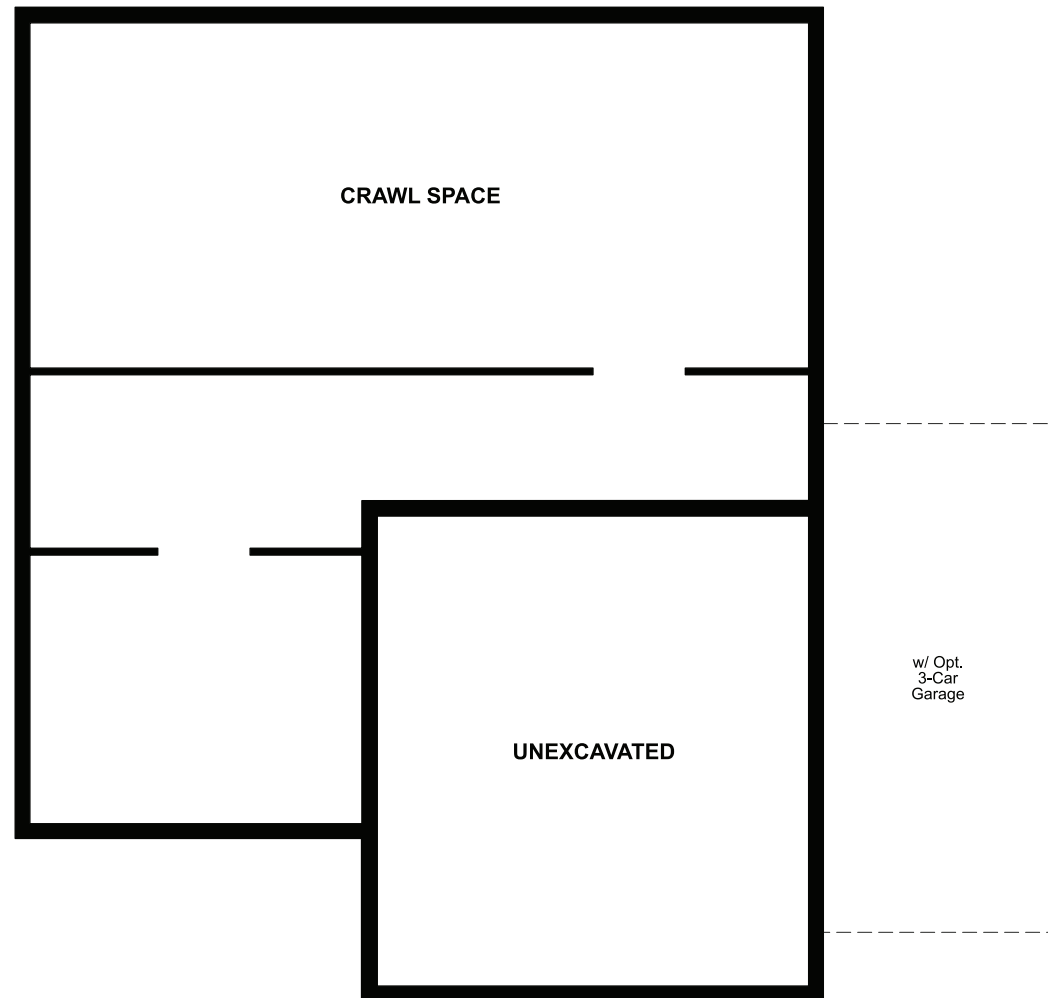


CRAWL SPACE
PRELIMINARY



ELEVATION G

ABOUT THE LAPIS

The lovely Lapis plan boasts versatile design and sought-after options. On the main floor, an open kitchen with a walk-in pantry and an island overlooks a dining area and a spacious great room. A flex room toward the front of the home is the perfect spot for a home gym or craft room and can also be optioned as a study. You'll find a loft and three generous bedrooms upstairs, including an elegant owner's suite with a walk-in closet and an attached bath with optional dual sinks. Need more sleeping space? Choose a fourth bedroom in lieu of the loft! Additional options include a covered patio and a 3-car garage.



ELEVATION B



ELEVATION C



ELEVATION D



ELEVATION E



ELEVATION F

COMMUNITY LOCATION:

Seasons at Salem Park | 132 West Willet Drive | Salem, UT 84653 | 801.207.9972

DESIGN CENTER LOCATION:

Utah Home Gallery™ | 849 W. LeVoy Drive, Suite 108 | Salt Lake City, UT 84123 | 801.545.5167

*This information is presented for educational purposes only. The HERS® index for a confirmed rating will be determined by a third-party HERS rater based on data gathered from on-site observations and, if required, testing of rated features for a home as featured, optioned, located, oriented and/or built.

**Standard new home is based on the RESNET® Reference Home definition with a HERS index of 100 (based on the 2006 International Energy Conservation Code).

***Typical resale home is based on the U.S. Department of Energy definition with a HERS index of 130.

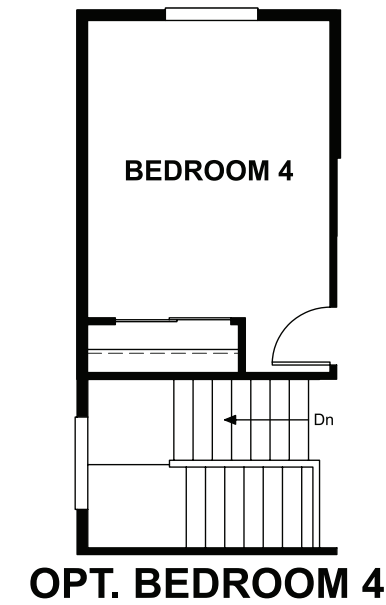
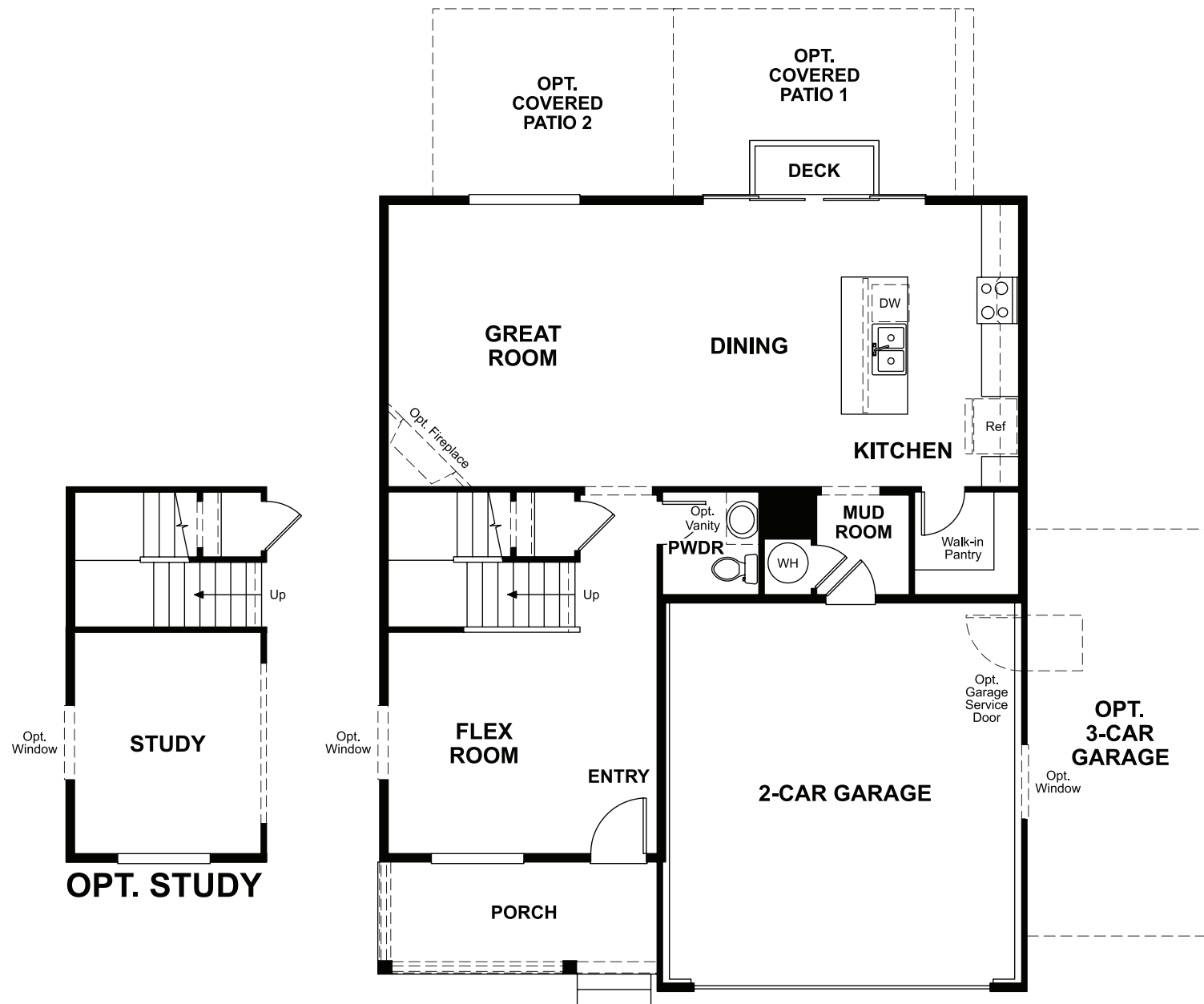
^RESNET has developed the HERS index to indicate the comparative efficiencies of homes. It is no guarantee that energy efficiencies will be achieved.



Floor plans and renderings are conceptual drawings and may vary from actual plans and homes as built. Options and features may not be available on all homes and are subject to change without notice. Actual homes may vary from photos and/or drawings which show upgraded landscaping and may not represent the lowest-priced homes in the community. Features may include optional upgrades and may not be available on all homes. Prices, specifications and availability are subject to change without notice. Square footage is approximate and subject to change without notice. ©2021 Richmond American Homes, Richmond American Homes of Utah, Inc. (866.400.4131). 7/14/2021

MAIN FLOOR
PRELIMINARY

SECOND FLOOR
PRELIMINARY



THIS PLAN'S PROJECTED
HERS® INDEX = 60*
Projected rating based on plans – field confirmation required

How does this floor plan rate?
Take a look: **100** = standard new home™ **130** = typical resale home™
The lower the number, the better! Refer to the RESNET® HERS index brochure or go to RESNET.us and HERSindex.com

What's a HERS® index? HERS stands for Home Energy Rating System, a system created by RESNET® to measure home energy efficiency.^^
A projected HERS index or rating is a computer simulation performed prior to construction by a third-party HERS rater using RESNET-accredited rating software, rated feature and specification data derived from home plans, features and specifications, and other data selected or assumed by the rater. The projected HERS index is approximate and is subject to change without notice. Actual results will vary.