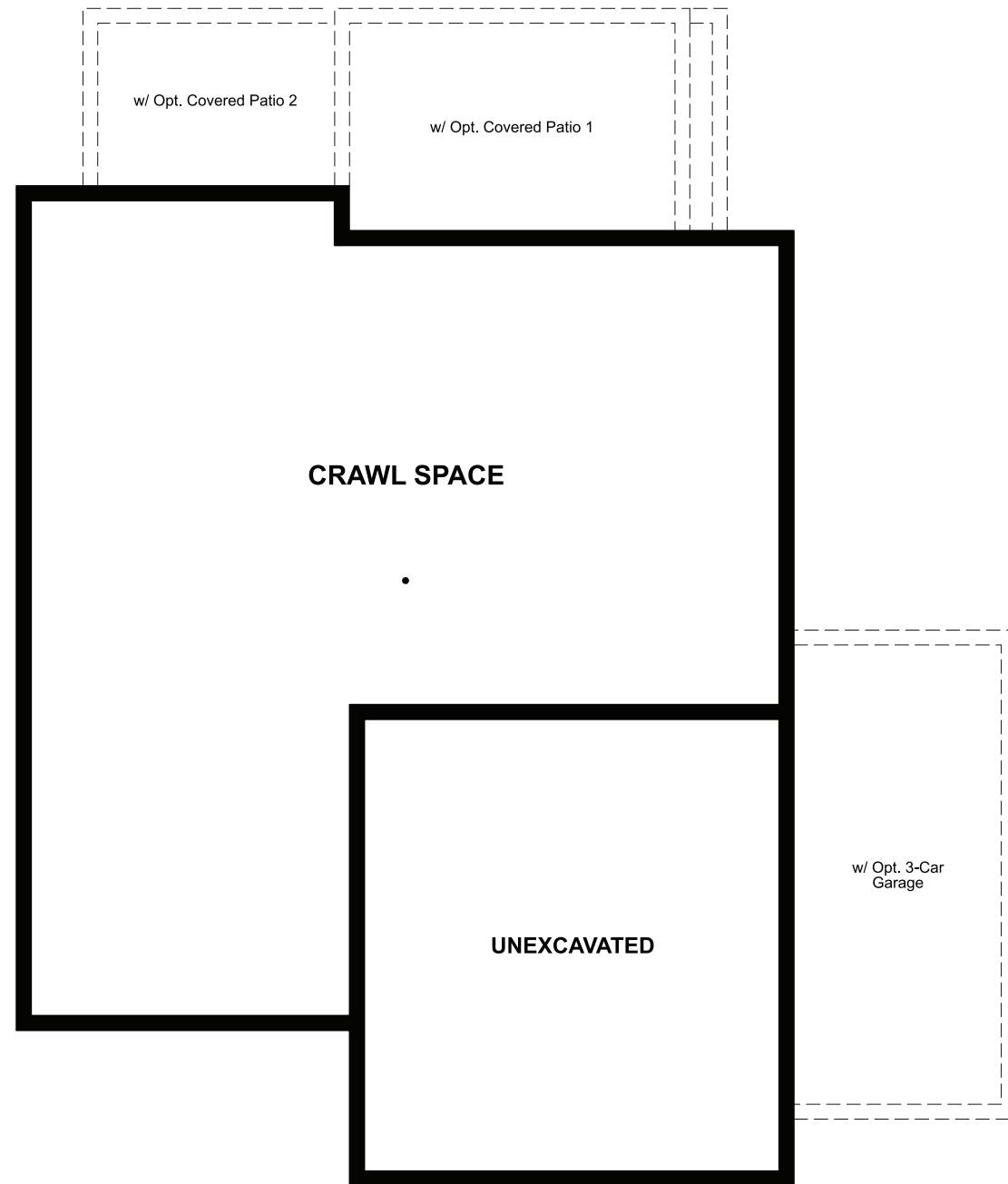


THE LAPIS

Approx. 2,240 sq. ft. | 3 to 4 bed | 2.5 bath | 2- to 3-car garage | Plan #D915

CRAWL SPACE



ELEVATION D

ABOUT THE LAPIS

The main floor of the beautiful Lapis plan offers versatile flex space, an inviting great room and an open dining room that flows into a corner kitchen with a center island and walk-in pantry. Upstairs, enjoy a large loft, a convenient laundry and a luxurious owner's suite. Personalize this plan with a cozy fireplace, a private study and an additional bedroom!



ELEVATION A



ELEVATION B



ELEVATION C

COMMUNITY LOCATION:

Seasons at Settlers Crossing | 18970 E. 96th Place | Commerce City, CO 80022 | 303.850.5750

DESIGN CENTER LOCATION:

HG2 by Richmond American™ | 8000 E. Belleview Avenue, Suite D-30 | Greenwood Village, CO 80111 | 888.402.4663



Floor plans and renderings are conceptual drawings and may vary from actual plans and homes as built. Options and features may not be available on all homes and are subject to change without notice. Actual homes may vary from photos and/or drawings which show upgraded landscaping and may not represent the lowest-priced homes in the community. Features may include optional upgrades and may not be available on all homes. Prices, specifications and availability are subject to change without notice. Square footage is approximate and subject to change without notice. ©2021 Richmond American Homes, Richmond American Homes of Colorado, Inc. 7/27/2021

MAIN FLOOR

SECOND FLOOR

