

SITEMAP



Map is conceptual only and is not to scale. May depict planned features, the completion of which may be outside the control of Richmond American Homes.  
 ©2021 Richmond American Homes, Richmond American Homes of Oregon, Inc., CCB #218193.

**COMMUNITY LOCATION:**

Seasons at Boones Crossing | 1440 Iris Street | Woodburn, OR 97071 | **971.317.7525**

**DESIGN CENTER LOCATION:**

Oregon Home Gallery™ | 222 NE Park Plaza Drive, Suite 130 | Vancouver, WA 98684 | **360.869.7500**

\*This information is presented for educational purposes only. The HERS® index for a confirmed rating will be determined by a third-party HERS rater based on data gathered from on-site observations and, if required, testing of rated features for a home as featured, optioned, located, oriented and/or built.

\*\*Standard new home is based on the RESNET® Reference Home definition with a HERS index of 100 (based on the 2006 International Energy Conservation Code).

\*\*\*Typical resale home is based on the U.S. Department of Energy definition with a HERS index of 130.

^RESNET has developed the HERS index to indicate the comparative efficiencies of homes. It is no guarantee that energy efficiencies will be achieved.

Floor plans and renderings are conceptual drawings and may vary from actual plans and homes as built. Options and features may not be available on all homes and are subject to change without notice. Actual homes may vary from photos and/or drawings which show upgraded landscaping and may not represent the lowest-priced homes in the community. Features may include optional upgrades and may not be available on all homes. Prices, specifications and availability are subject to change without notice. Square footage is approximate and subject to change without notice. ©2021 Richmond American Homes, Richmond American Homes of Oregon, Inc., CCB #218193. 8/12/2021



ELEVATION C

**ABOUT THE ALEXANDRITE**

The Alexandrite plan combines spacious living areas with ample opportunities for personalization. A covered entry leads past a laundry into an open floorplan, featuring a kitchen with a center island, a dining area, and a great room with optional fireplace. The owner's suite is adjacent, and includes a walk-in closet and private bathroom. You'll find two additional bedrooms and a full bath, as well as a study that can be optioned as a fourth bedroom. Personalize this plan with an extended covered patio!



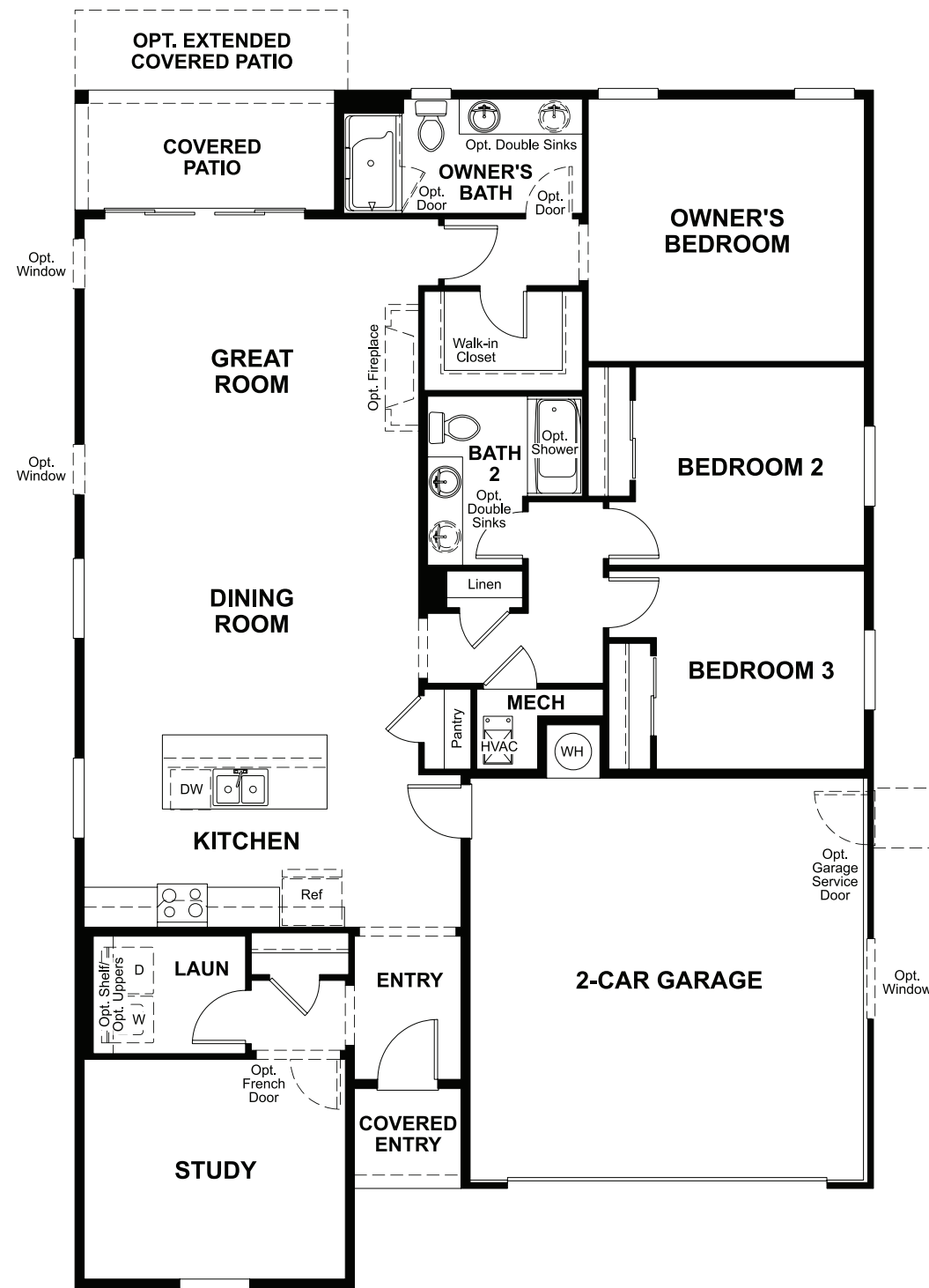
ELEVATION A



ELEVATION B

MAIN FLOOR

MAIN FLOOR OPTIONS



THIS PLAN'S PROJECTED  
**HERS® INDEX = 53\***  
 Projected rating based on plans – field confirmation required

**How does this floor plan rate?**  
 Take a look: **100** = standard new home™ **130** = typical resale home™  
 The lower the number, the better! Refer to the RESNET® HERS index brochure  
 or go to [RESNET.us](http://RESNET.us) and [HERSindex.com](http://HERSindex.com)

**What's a HERS® index?** HERS stands for Home Energy Rating System, a system created by RESNET® to measure home energy efficiency. ^  
 A projected HERS index or rating is a computer simulation performed prior to construction by a third-party HERS rater using RESNET-accredited rating software, rated feature and specification data derived from home plans, features and specifications, and other data selected or assumed by the rater. The projected HERS index is approximate and is subject to change without notice. Actual results will vary.