

SITEMAP



Map is conceptual only and is not to scale. May depict planned features, the completion of which may be outside the control of Richmond American Homes.  
 ©2021 Richmond American Homes, Richmond American Homes of Oregon, Inc., CCB #218193.

**COMMUNITY LOCATION:**

Seasons at Boones Crossing | 1440 Iris Street | Woodburn, OR 97071 | 971.317.7525

**DESIGN CENTER LOCATION:**

Oregon Home Gallery™ | 222 NE Park Plaza Drive, Suite 130 | Vancouver, WA 98684 | 360.869.7500

\*This information is presented for educational purposes only. The HERS® index for a confirmed rating will be determined by a third-party HERS rater based on data gathered from on-site observations and, if required, testing of rated features for a home as featured, optioned, located, oriented and/or built.

\*\*Standard new home is based on the RESNET® Reference Home definition with a HERS index of 100 (based on the 2006 International Energy Conservation Code).

\*\*\*Typical resale home is based on the U.S. Department of Energy definition with a HERS index of 130.

^RESNET has developed the HERS index to indicate the comparative efficiencies of homes. It is no guarantee that energy efficiencies will be achieved.

Floor plans and renderings are conceptual drawings and may vary from actual plans and homes as built. Options and features may not be available on all homes and are subject to change without notice. Actual homes may vary from photos and/or drawings which show upgraded landscaping and may not represent the lowest-priced homes in the community. Features may include optional upgrades and may not be available on all homes. Prices, specifications and availability are subject to change without notice. Square footage is approximate and subject to change without notice. ©2021 Richmond American Homes, Richmond American Homes of Oregon, Inc., CCB #218193. 8/12/2021



ELEVATION C

**ABOUT THE CORAL**

The main floor of the Coral plan offers a large, uninterrupted space for relaxing, entertaining and dining. The kitchen features a roomy center island with seating and opens to the dining and great rooms. Upstairs, there's a large loft, a full bath tucked between two inviting bedrooms, and a private owner's suite with a walk-in closet and convenient bath. Options include a covered patio and a bedroom in lieu of the loft.

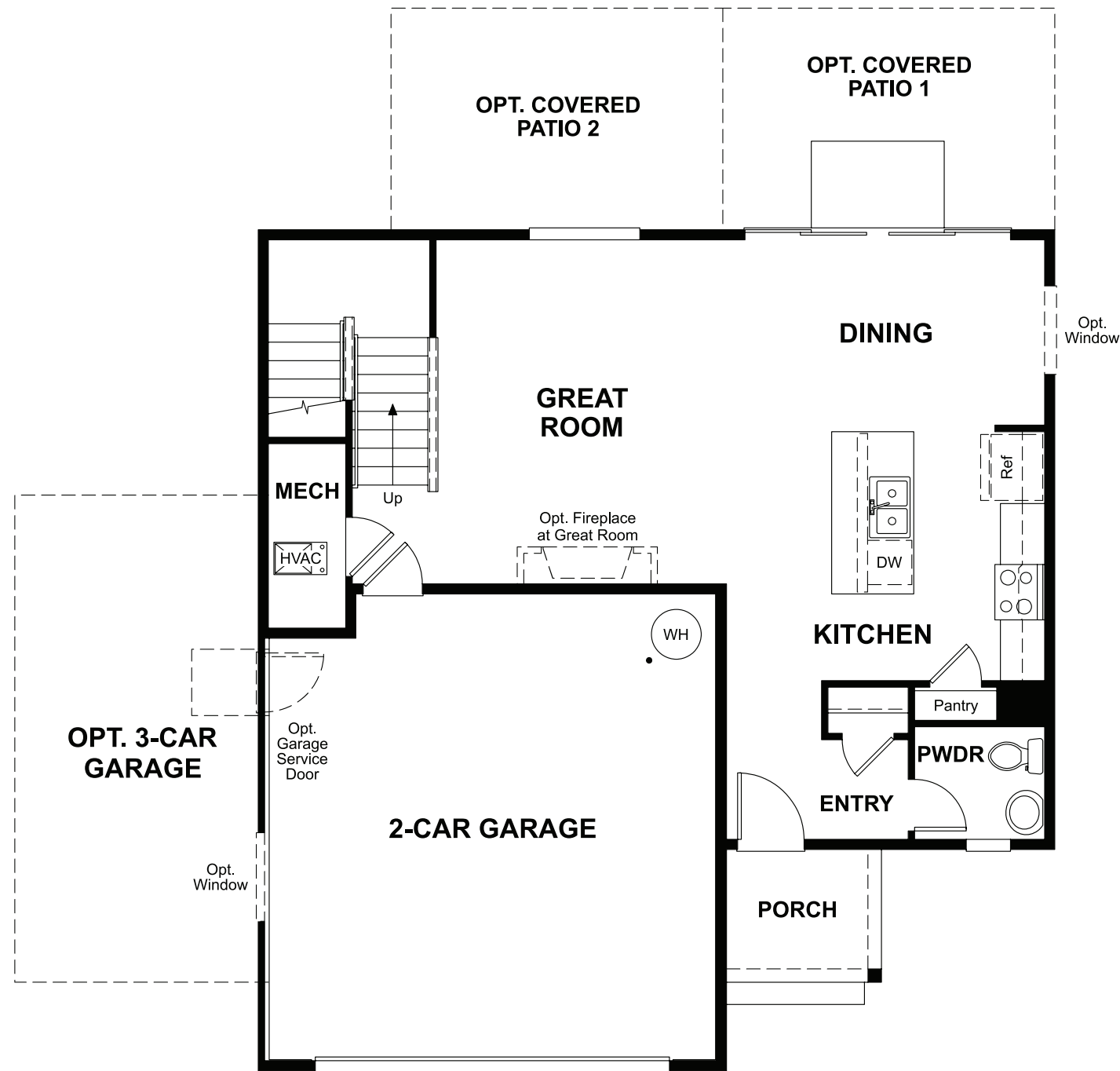


ELEVATION A

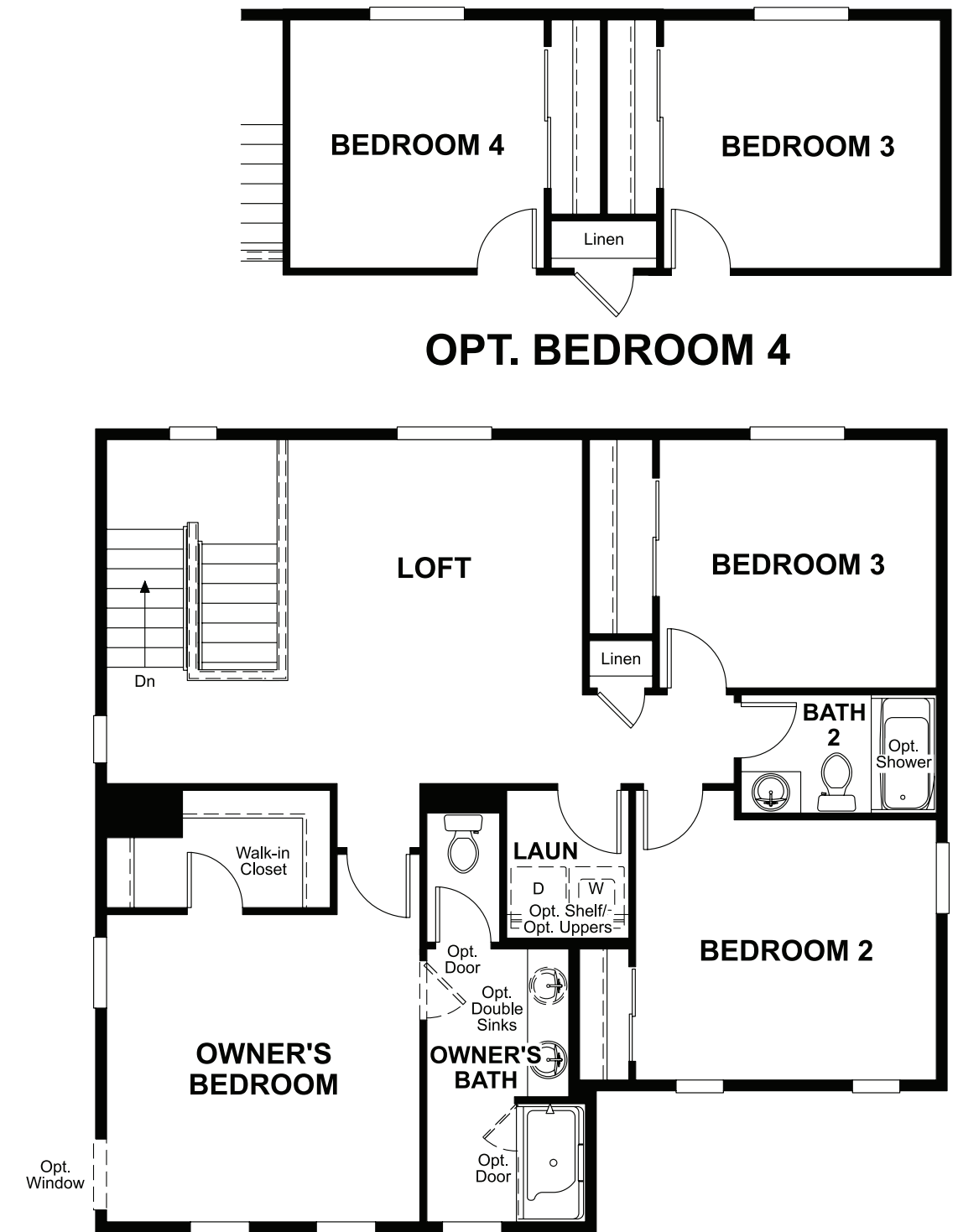


ELEVATION B

MAIN FLOOR



SECOND FLOOR



THIS PLAN'S PROJECTED **HERS® INDEX = 54\***  
 Projected rating based on plans – field confirmation required

**How does this floor plan rate?**  
 Take a look: **100** = standard new home™ **130** = typical resale home™  
 The lower the number, the better! Refer to the RESNET® HERS index brochure or go to [RESNET.us](http://RESNET.us) and [HERSindex.com](http://HERSindex.com)

**What's a HERS® index?** HERS stands for Home Energy Rating System, a system created by RESNET® to measure home energy efficiency.^  
 A projected HERS index or rating is a computer simulation performed prior to construction by a third-party HERS rater using RESNET-accredited rating software, rated feature and specification data derived from home plans, features and specifications, and other data selected or assumed by the rater. The projected HERS index is approximate and is subject to change without notice. Actual results will vary.