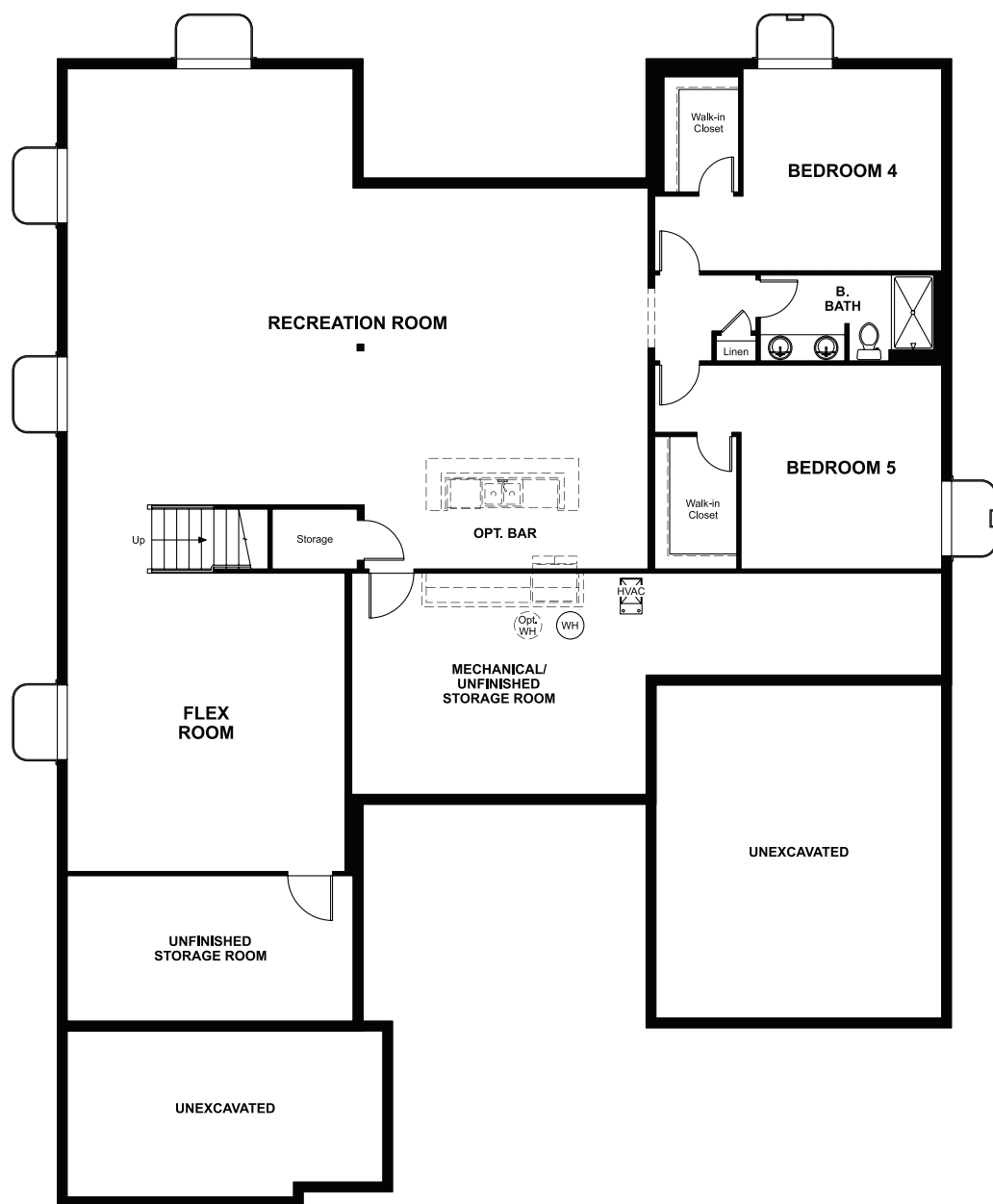


BASEMENT



OPT. FINISHED BASEMENT 4



ELEVATION J

ABOUT THE HANFORD

The ranch-style Hanford offers attractive curb appeal with front- and side-entry garages and a wide porch. Inside, you'll find a formal dining room, a spacious great room, a nook, a tech center and an open kitchen with a roomy walk-in pantry and an immense central island. The owner's suite offers a large walk-in closet and a private bath.

COMMUNITY LOCATION:

The Pinnacle at Cobblestone Ranch | 6289 Leilani Drive | Castle Rock, CO 80108 | 303.651.0489

DESIGN CENTER LOCATION:

Denver Metro Home Gallery™ | 8000 E. Belleview Avenue, Suite C-12 | Greenwood Village, CO 80111 | 888.402.4663




ELEVATION F



ELEVATION G



ELEVATION H

 Floor plans and renderings are conceptual drawings and may vary from actual plans and homes as built. Options and features may not be available on all homes and are subject to change without notice. Actual homes may vary from photos and/or drawings which show upgraded landscaping and may not represent the lowest-priced homes in the community. Features may include optional upgrades and may not be available on all homes. Prices, specifications and availability are subject to change without notice. Square footage is approximate and subject to change without notice. ©2021 Richmond American Homes, Richmond American Homes of Colorado, Inc. 8/26/2021

