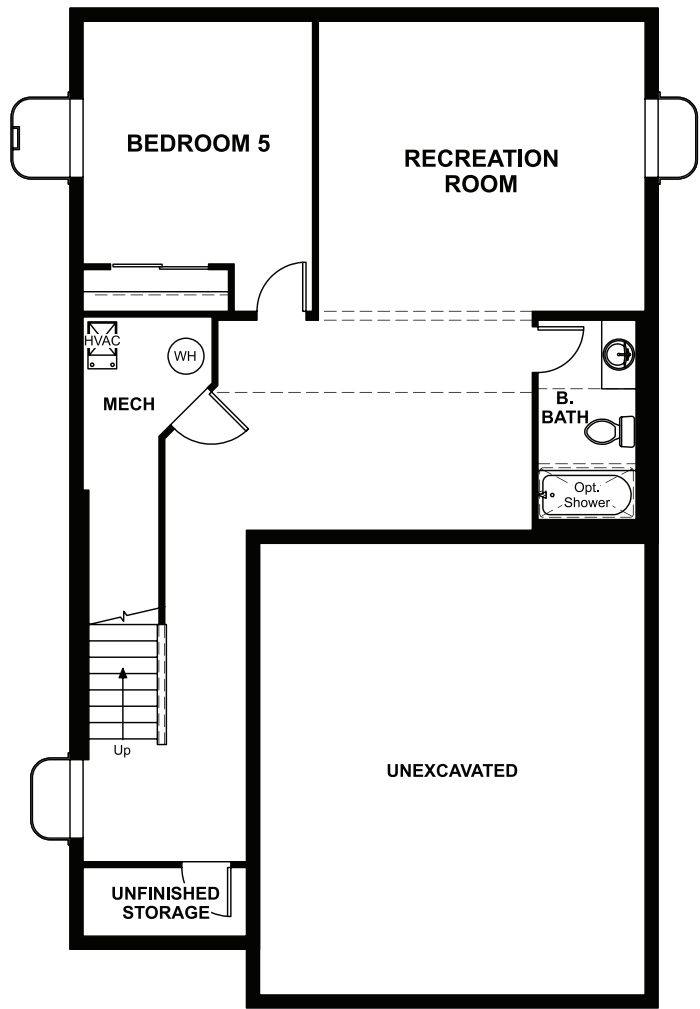


BASEMENT




OPT FINISHED BASEMENT

COMMUNITY LOCATION:

Hawthorn at The Meadows | 2273 Bramble Street | Castle Rock, CO 80109 | 303.850.5750

DESIGN CENTER LOCATION:

Denver Metro Home Gallery™ | 8000 E. Belview Avenue, Suite C-12 | Greenwood Village, CO 80111 | 888.402.4663

 Floor plans and renderings are conceptual drawings and may vary from actual plans and homes as built. Options and features may not be available on all homes and are subject to change without notice. Actual homes may vary from photos and/or drawings which show upgraded landscaping and may not represent the lowest-priced homes in the community. Features may include optional upgrades and may not be available on all homes. Prices, specifications and availability are subject to change without notice. Square footage is approximate and subject to change without notice. ©2021 Richmond American Homes, Richmond American Homes of Colorado, Inc. 10/11/2021



ELEVATION C

ABOUT THE LAUREL

On the main floor of the beautiful Laurel plan, you'll find a convenient powder room, a spacious great room and an open dining room that flows into a gourmet kitchen featuring an immense island, corner pantry and double oven. Upstairs, discover a central laundry, a large loft, two inviting bedrooms, a full bath and a luxurious owner's suite boasting a private bath and oversized walk-in closet. Personalization options include an extra bedroom in lieu of the loft, a finished basement, and a covered patio.

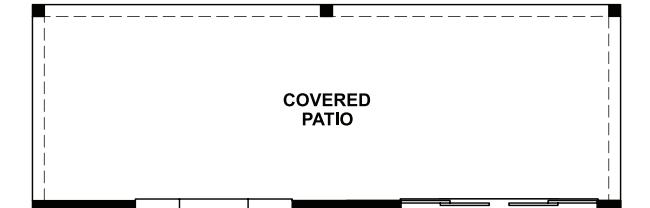
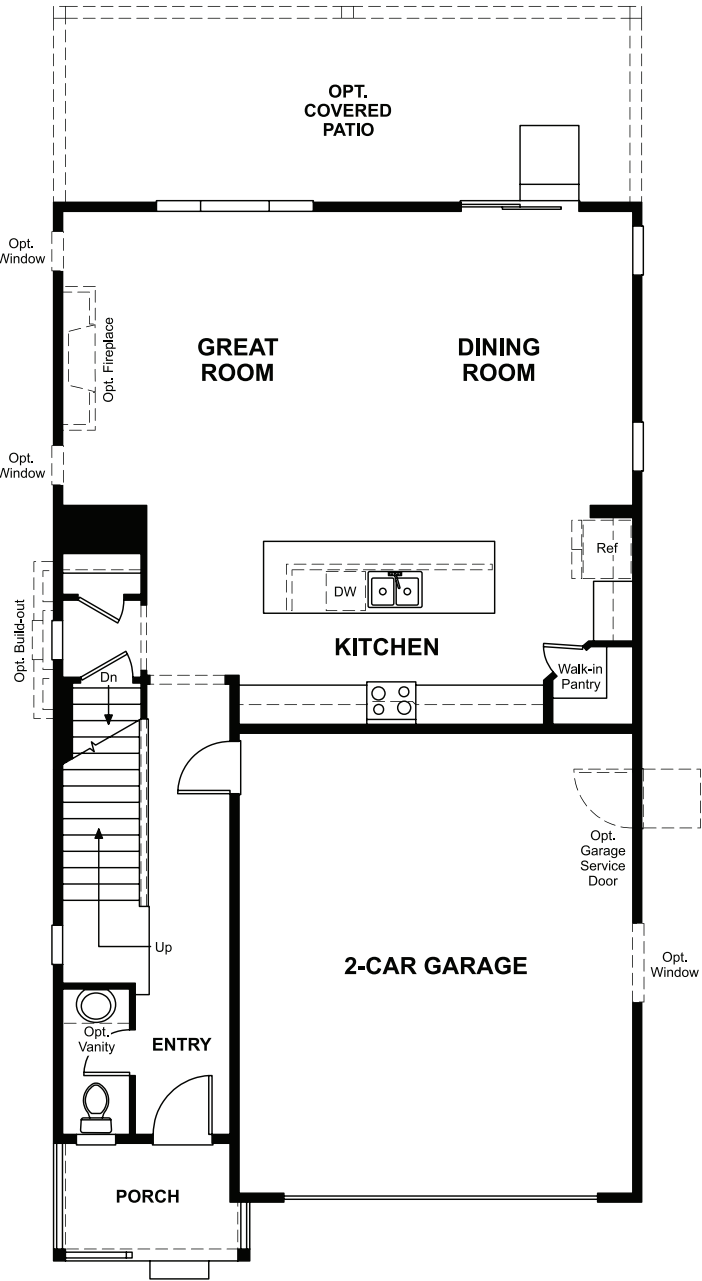


ELEVATION A

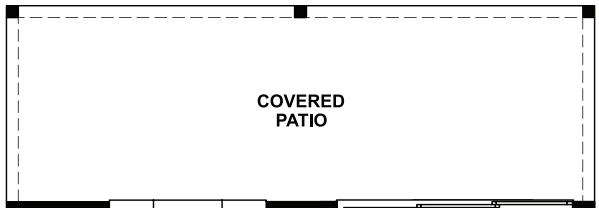


ELEVATION B

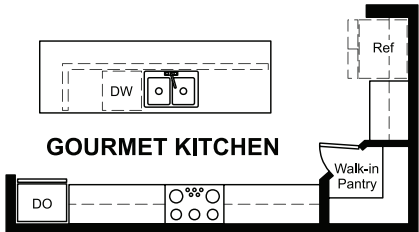
MAIN FLOOR



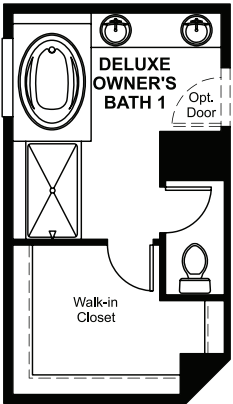
OPT. CENTER-MEET DOOR AT DINING



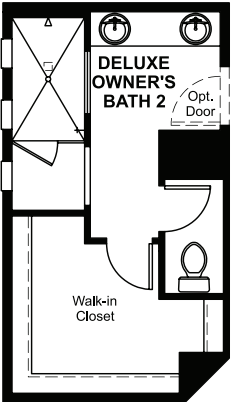
OPT. MULTI-SLIDE DOOR AT DINING



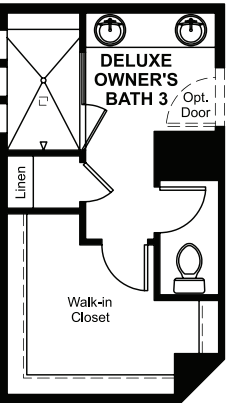
OPT. GOURMET KITCHEN



OPT. DELUXE OWNER'S BATH 1

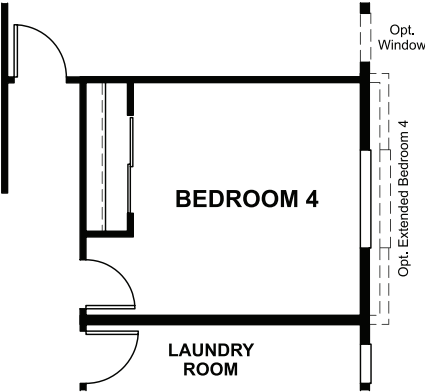
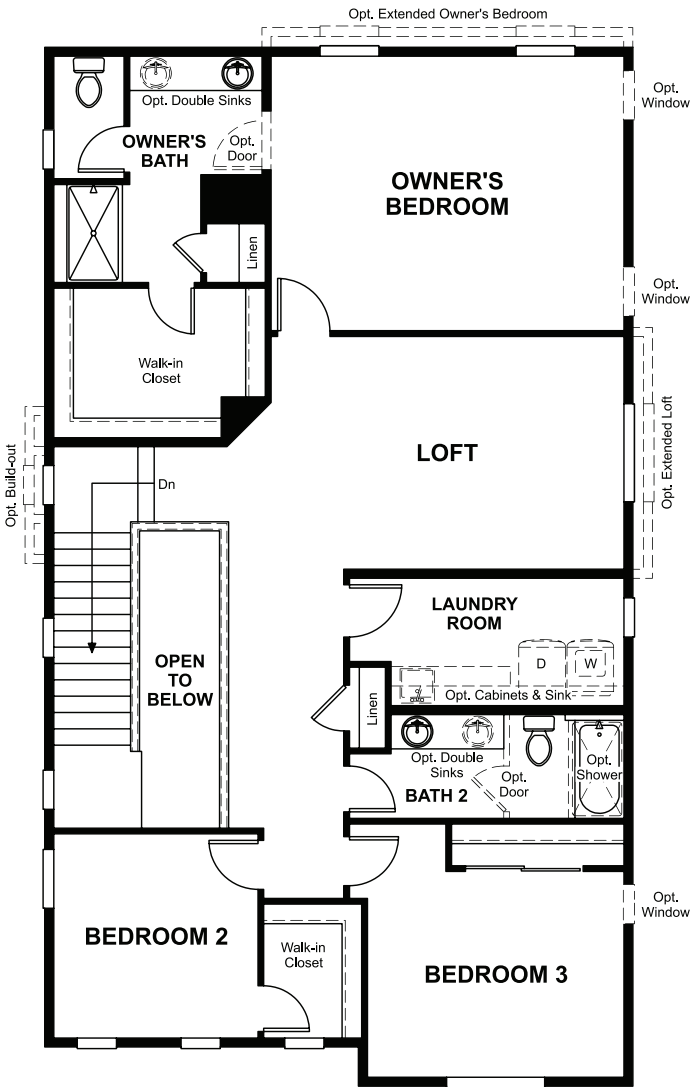


OPT. DELUXE OWNER'S BATH 2



OPT. DELUXE OWNER'S BATH 3

SECOND FLOOR



OPT. BEDROOM 4