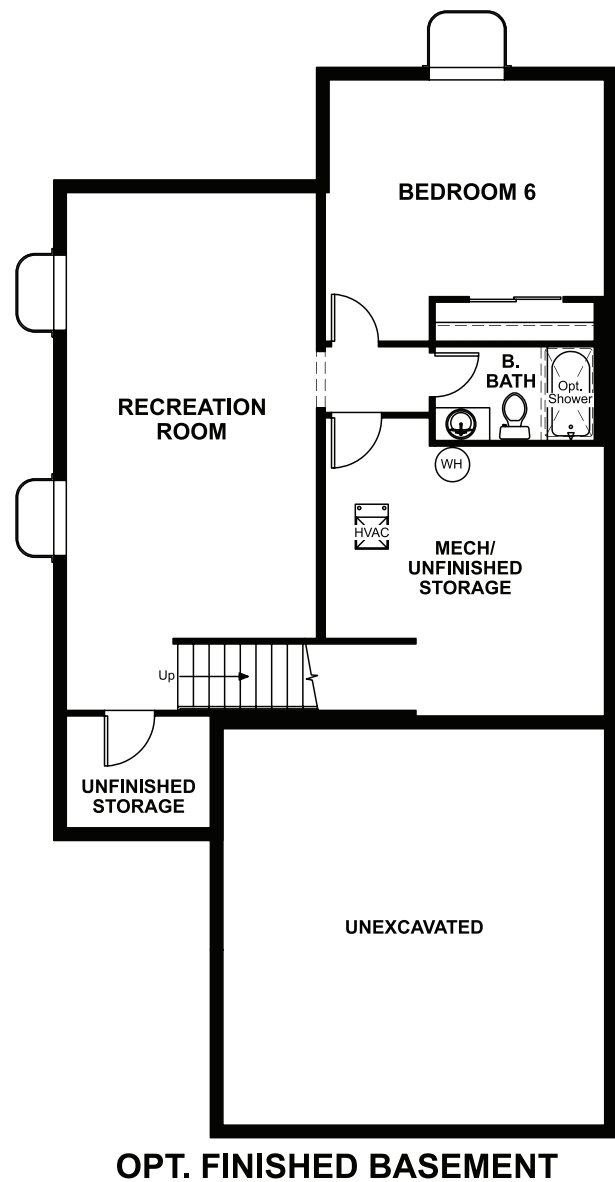


BASEMENT



ELEVATION C

ABOUT THE LAYLA

The versatile Layla floor plan offers two levels of thoughtfully designed living space. On the main floor, a two-story great room and dining area open onto an inviting kitchen with a large center island and optional gourmet features. Nearby, there's a private study and a powder room, which can be optioned as a full bath. Upstairs, you'll find three secondary bedrooms with a shared bath, and a lavish owner's suite boasting a private bath and immense walk-in closet. A convenient laundry rounds out the floor. Need extra space? Add a loft, an additional bedroom or an owner's retreat to fit your lifestyle.



ELEVATION A



ELEVATION B

COMMUNITY LOCATION:

Hawthorn at The Meadows | 2273 Bramble Street | Castle Rock, CO 80109 | 303.850.5750

DESIGN CENTER LOCATION:

Denver Metro Home Gallery™ | 8000 E. Belleview Avenue, Suite C-12 | Greenwood Village, CO 80111 | 888.402.4663



Floor plans and renderings are conceptual drawings and may vary from actual plans and homes as built. Options and features may not be available on all homes and are subject to change without notice. Actual homes may vary from photos and/or drawings which show upgraded landscaping and may not represent the lowest-priced homes in the community. Features may include optional upgrades and may not be available on all homes. Prices, specifications and availability are subject to change without notice. Square footage is approximate and subject to change without notice. ©2021 Richmond American Homes, Richmond American Homes of Colorado, Inc. 8/30/2021

