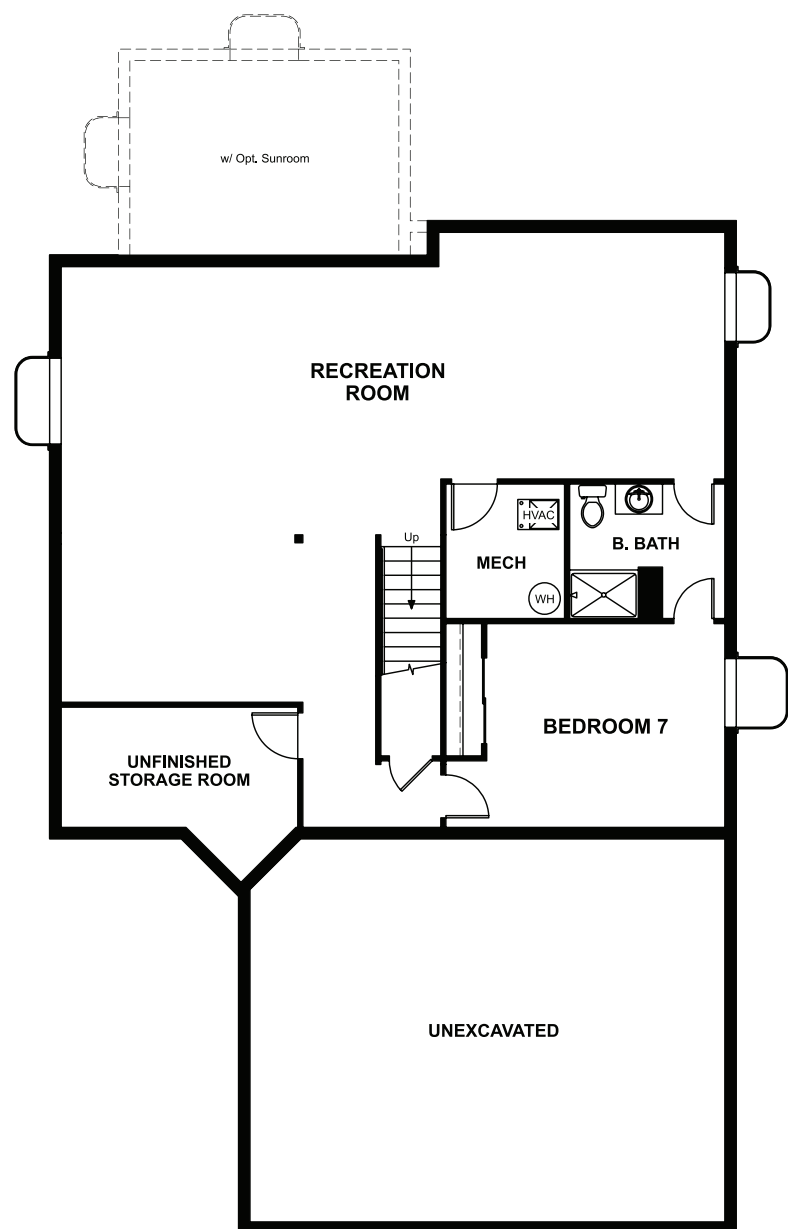


BASEMENT




OPT. FINISHED BASEMENT 4

COMMUNITY LOCATION:

Hawthorn at The Meadows | 2273 Bramble Street | Castle Rock, CO 80109 | 303.850.5750

DESIGN CENTER LOCATION:

Denver Metro Home Gallery™ | 8000 E. Belleview Avenue, Suite C-12 | Greenwood Village, CO 80111 | 888.402.4663

 Floor plans and renderings are conceptual drawings and may vary from actual plans and homes as built. Options and features may not be available on all homes and are subject to change without notice. Actual homes may vary from photos and/or drawings which show upgraded landscaping and may not represent the lowest-priced homes in the community. Features may include optional upgrades and may not be available on all homes. Prices, specifications and availability are subject to change without notice. Square footage is approximate and subject to change without notice. ©2021 Richmond American Homes, Richmond American Homes of Colorado, Inc. 8/30/2021



ELEVATION C

ABOUT THE SETH

The Seth plan features a spacious great room that opens onto the nook and kitchen, an elegant dining room and a quiet study with a walk-in closet. Upstairs, you'll find a versatile loft, convenient laundry and four bedrooms—including an owner's suite with two walk-in closets and a private bath.



ELEVATION A



ELEVATION B

MAIN FLOOR

SECOND FLOOR

