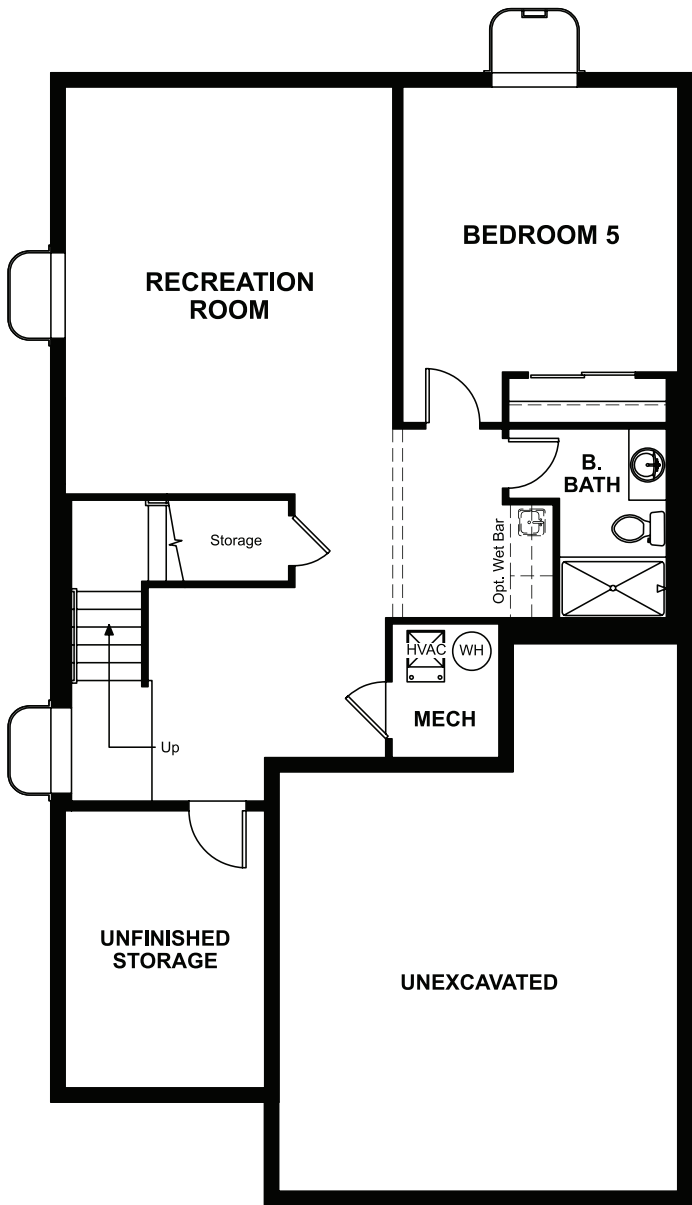


BASEMENT




OPT. FINISHED BASEMENT

COMMUNITY LOCATION:

Hawthorn at The Meadows | 2273 Bramble Street | Castle Rock, CO 80109 | 303.850.5750

DESIGN CENTER LOCATION:

Denver Metro Home Gallery™ | 8000 E. Belview Avenue, Suite C-12 | Greenwood Village, CO 80111 | 888.402.4663

 Floor plans and renderings are conceptual drawings and may vary from actual plans and homes as built. Options and features may not be available on all homes and are subject to change without notice. Actual homes may vary from photos and/or drawings which show upgraded landscaping and may not represent the lowest-priced homes in the community. Features may include optional upgrades and may not be available on all homes. Prices, specifications and availability are subject to change without notice. Square footage is approximate and subject to change without notice. ©2021 Richmond American Homes, Richmond American Homes of Colorado, Inc. 10/11/2021



ELEVATION C

ABOUT THE LEAH

The main floor of the lovely Leah plan boasts a formal dining room, a great room with an optional fireplace and a well-appointed kitchen featuring a center island and walk-in pantry. You'll also appreciate convenient mud and powder rooms. Upstairs, discover a laundry, a relaxing loft and three inviting bedrooms, including an elegant owner's suite with a private bath and expansive walk-in closet. Make this home your own with exciting options, such as a gourmet kitchen, deluxe owner's bath, fourth bedroom, covered patio and finished basement.



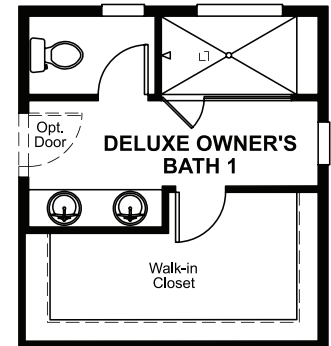
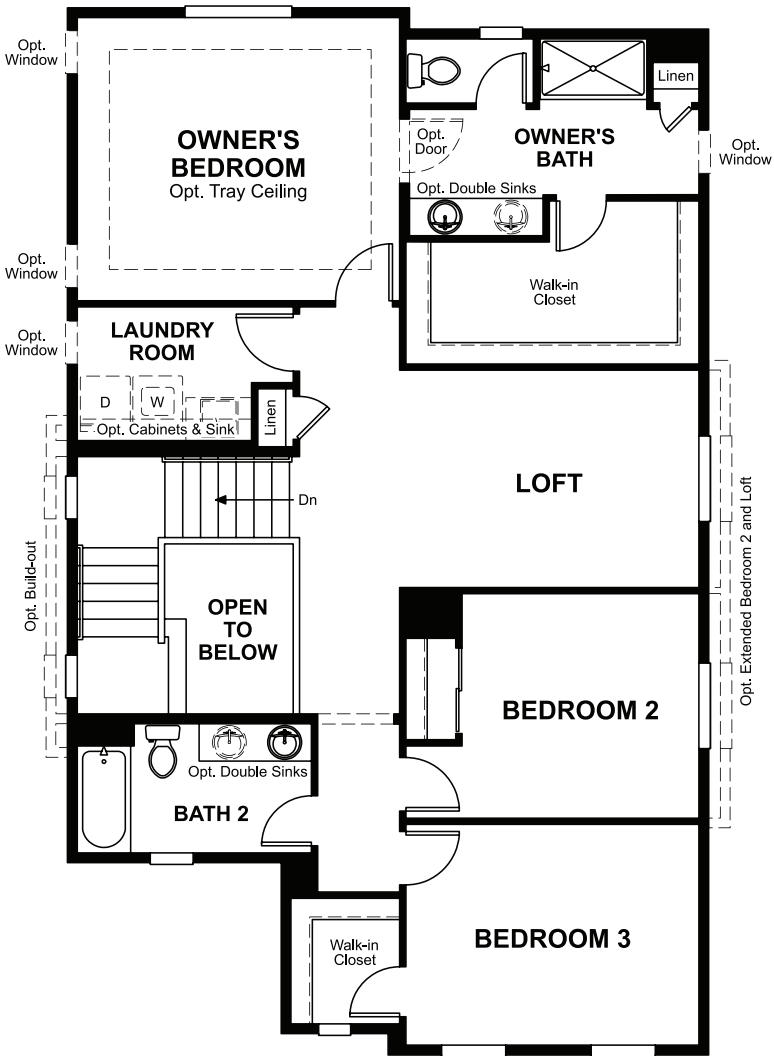
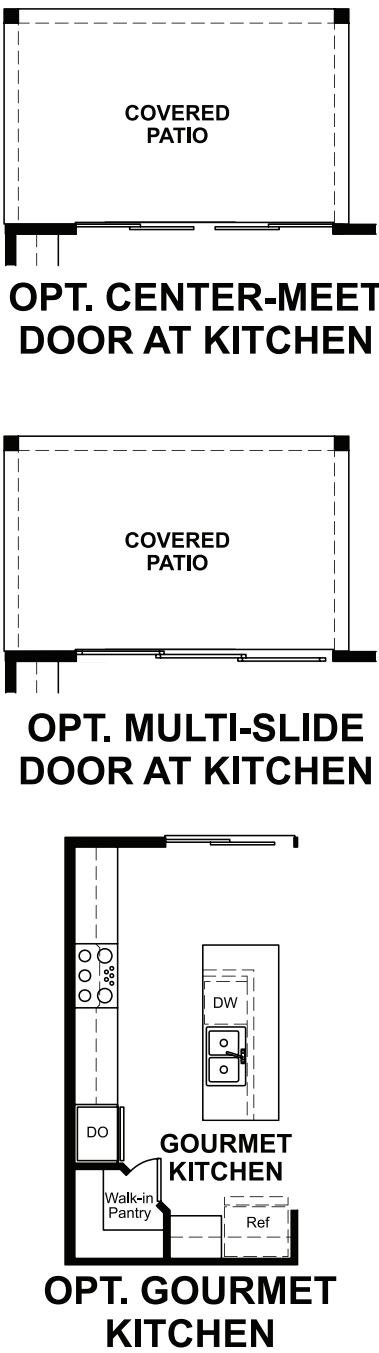
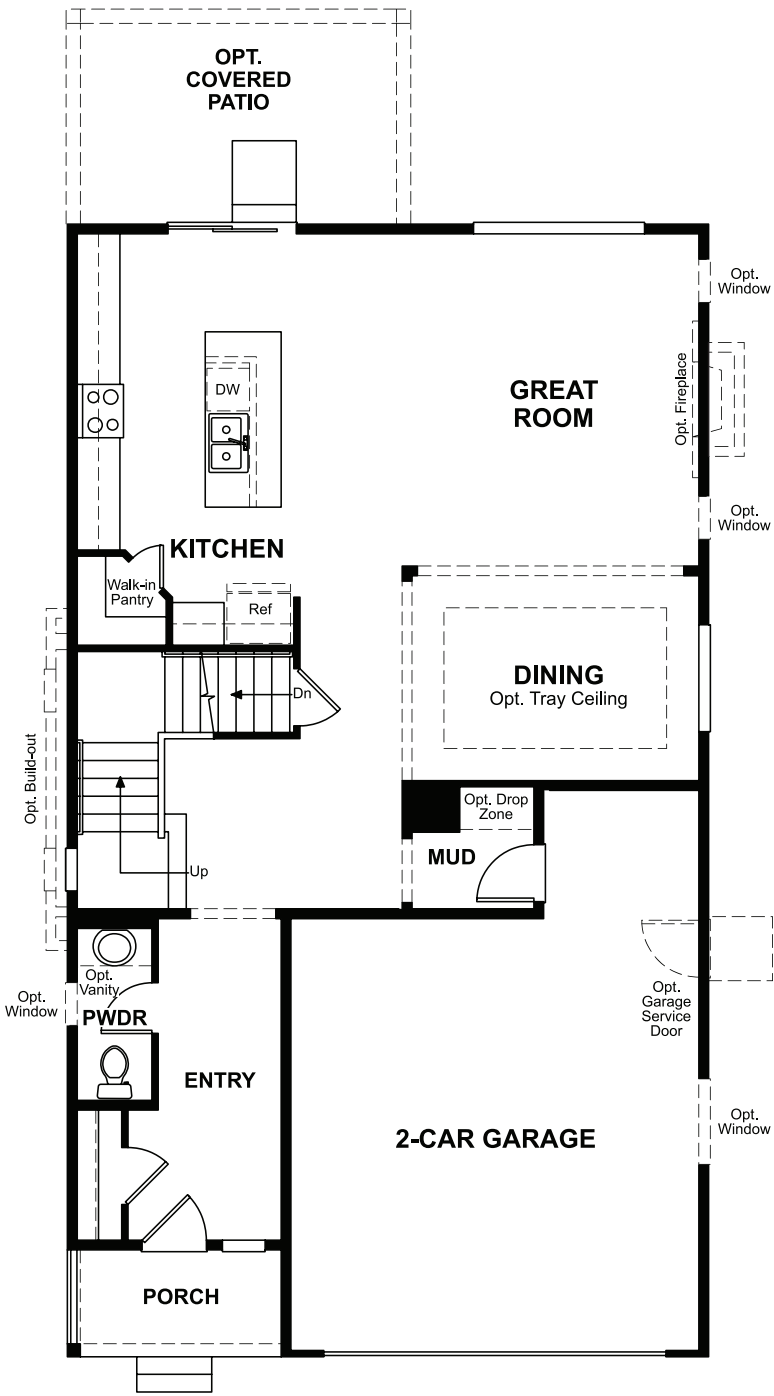
ELEVATION A



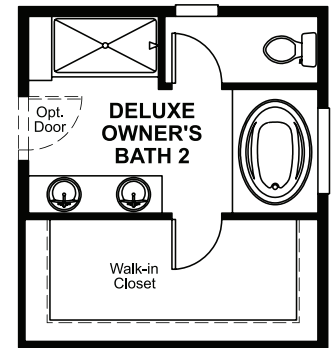
ELEVATION B

MAIN FLOOR

SECOND FLOOR



OPT. DELUXE OWNER'S BATH 1



OPT. DELUXE OWNER'S BATH 2



OPT. BEDROOM 4