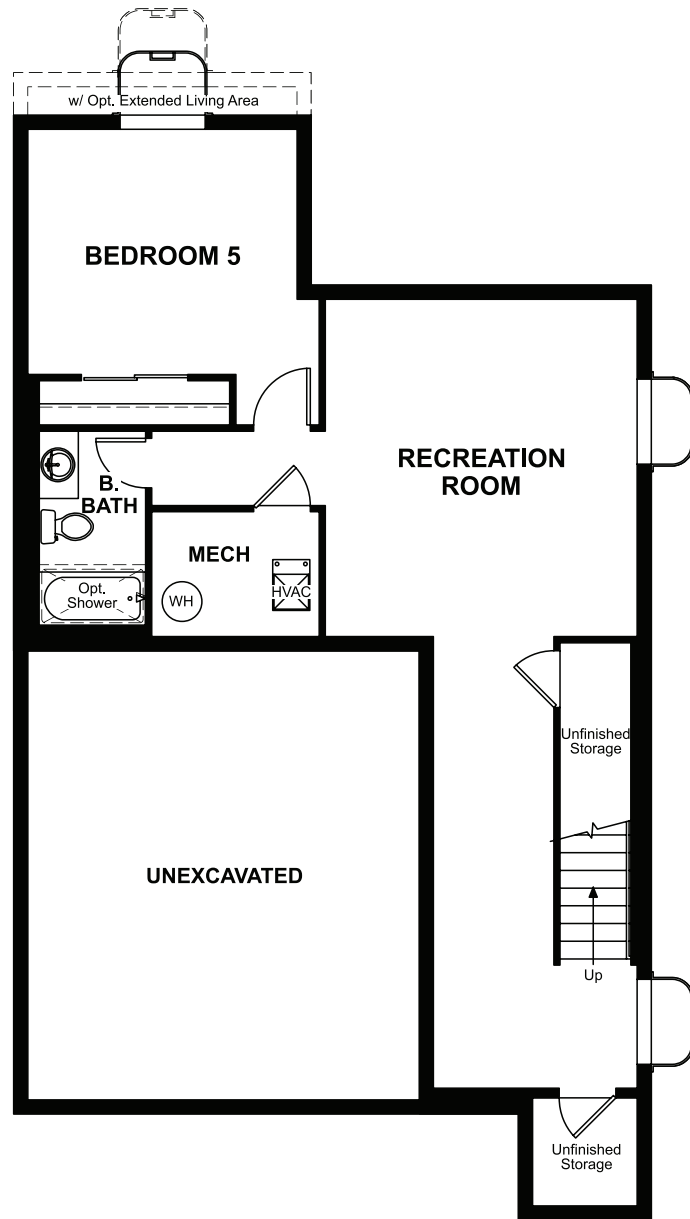


BASEMENT



**OPT. FINISHED BASEMENT**

**COMMUNITY LOCATION:**

Hawthorn at The Meadows | 2273 Bramble Street | Castle Rock, CO 80109 | 303.850.5750

**DESIGN CENTER LOCATION:**

Denver Metro Home Gallery™ | 8000 E. Belleview Avenue, Suite C-12 | Greenwood Village, CO 80111 | 888.402.4663



Floor plans and renderings are conceptual drawings and may vary from actual plans and homes as built. Options and features may not be available on all homes and are subject to change without notice. Actual homes may vary from photos and/or drawings which show upgraded landscaping and may not represent the lowest-priced homes in the community. Features may include optional upgrades and may not be available on all homes. Prices, specifications and availability are subject to change without notice. Square footage is approximate and subject to change without notice. ©2021 Richmond American Homes, Richmond American Homes of Colorado, Inc. 8/30/2021



ELEVATION C

**ABOUT THE LIESEL**

The Liesel plan greets guests with a dramatic two-story entry. The main floor offers a spacious great room with an optional corner fireplace and a large kitchen boasting abundant counter space, a center island and an adjacent dining area. There's even a generous covered patio—perfect for entertaining! Upstairs, discover a convenient laundry, a versatile loft, two generous bedrooms with a shared bath and an elegant owner's suite with a roomy walk-in closet and attached bath. Personalize this plan with a gourmet kitchen, deluxe owner's bath, additional bedroom and finished basement!



ELEVATION A



ELEVATION B

MAIN FLOOR

SECOND FLOOR

