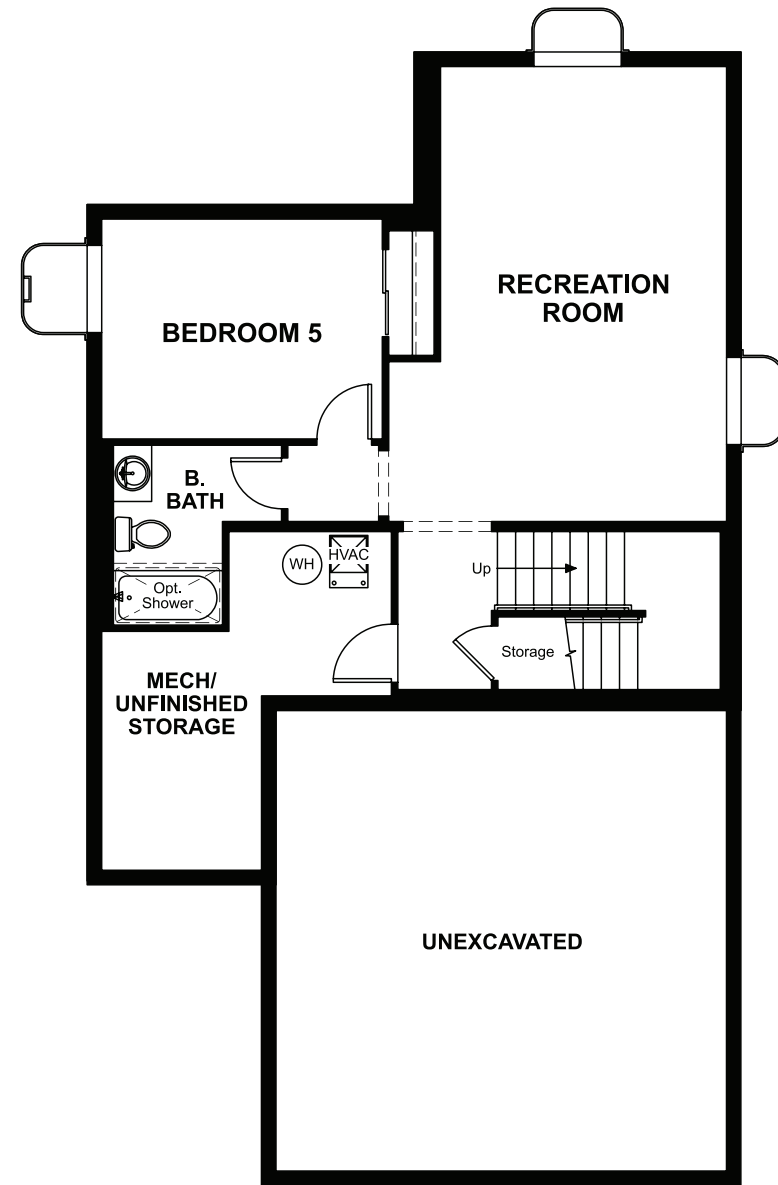


BASEMENT




**OPT. FINISHED BASEMENT**

**COMMUNITY LOCATION:**

Hawthorn at The Meadows | 2273 Bramble Street | Castle Rock, CO 80109 | 303.850.5750

**DESIGN CENTER LOCATION:**

Denver Metro Home Gallery™ | 8000 E. Belleview Avenue, Suite C-12 | Greenwood Village, CO 80111 | 888.402.4663

 Floor plans and renderings are conceptual drawings and may vary from actual plans and homes as built. Options and features may not be available on all homes and are subject to change without notice. Actual homes may vary from photos and/or drawings which show upgraded landscaping and may not represent the lowest-priced homes in the community. Features may include optional upgrades and may not be available on all homes. Prices, specifications and availability are subject to change without notice. Square footage is approximate and subject to change without notice. ©2021 Richmond American Homes, Richmond American Homes of Colorado, Inc. 8/30/2021



ELEVATION C

**ABOUT THE LIGHTNER**

Entertain with ease in the open-concept Lightner floor plan. Guests are free to mingle in the dining and great rooms or out on the optional covered patio while you keep an eye on the refreshments in the well-appointed kitchen with center island. Upstairs, there's a convenient laundry, a versatile loft that may be used as a playroom or craft space, and three large bedrooms, including a serene owner's suite with a roomy walk-in closet and attached bath with optional deluxe features. Additional options include a gourmet kitchen, an extra bedroom in lieu of the loft and a finished basement.



ELEVATION A



ELEVATION B

MAIN FLOOR

SECOND FLOOR

