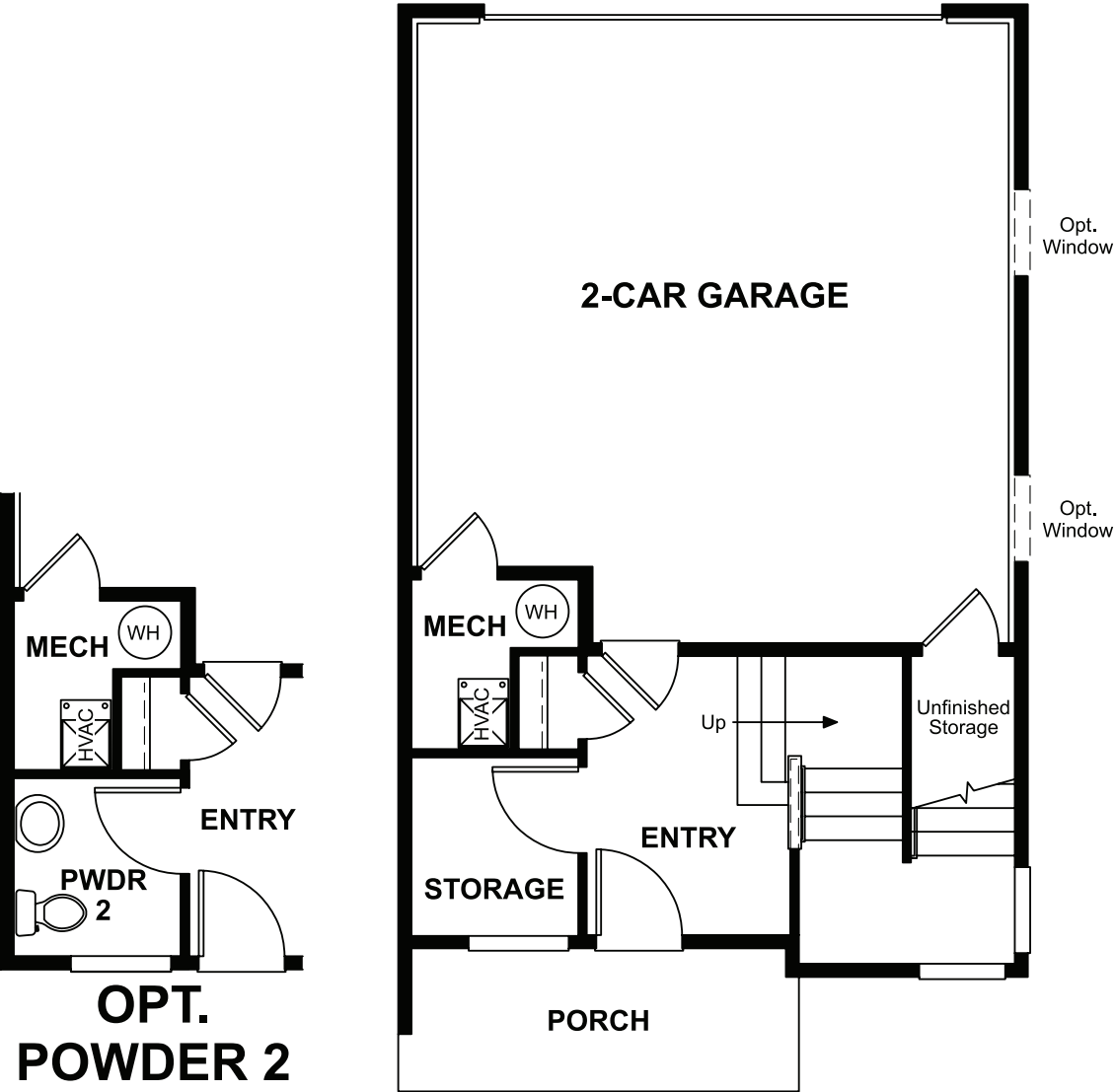


LOWER FLOOR



ELEVATION F

ABOUT THE SOHO


Offering an array of attractive options, the Soho plan is designed to complement your modern lifestyle. Storage space on the lower floor of this standalone home can be optioned as a powder room, and the quiet main-floor study can be converted to a third bedroom. You'll also appreciate the spacious living room, which opens to an inviting kitchen with optional gourmet features. Upstairs, enjoy a lavish owner's suite with an optional deluxe bath. A relaxing rooftop terrace is also included.

COMMUNITY LOCATION:

Cityscape at Karl's Farm | 12200 Karl's Lane | Northglenn, CO 80241 | **303.660.0151**

DESIGN CENTER LOCATION:

Denver Metro Home Gallery[™] | 8000 E. Belview Avenue, Suite C-12 | Greenwood Village, CO 80111 | **888.402.4663**

 Floor plans and renderings are conceptual drawings and may vary from actual plans and homes as built. Options and features may not be available on all homes and are subject to change without notice. Actual homes may vary from photos and/or drawings which show upgraded landscaping and may not represent the lowest-priced homes in the community. Features may include optional upgrades and may not be available on all homes. Prices, specifications and availability are subject to change without notice. Square footage is approximate and subject to change without notice. ©2021 Richmond American Homes, Richmond American Homes of Colorado, Inc. 6/28/2021



ELEVATION C

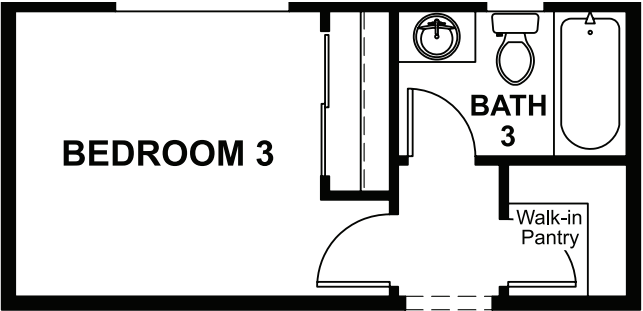


ELEVATION D

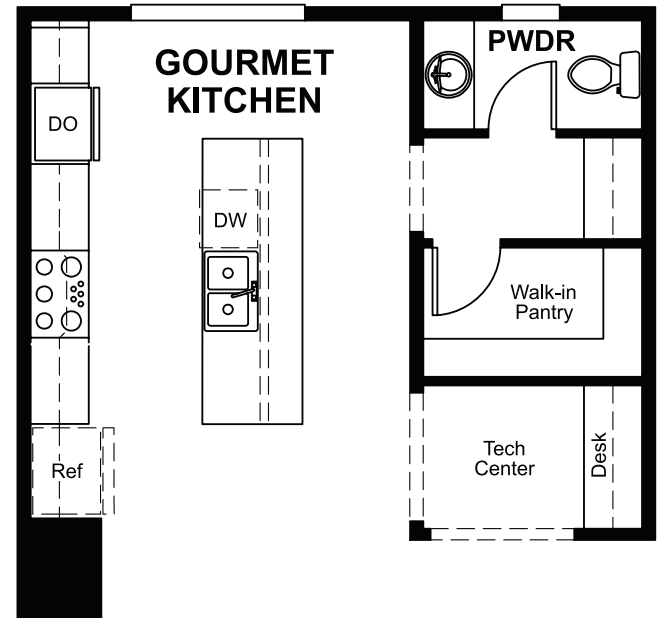


ELEVATION E

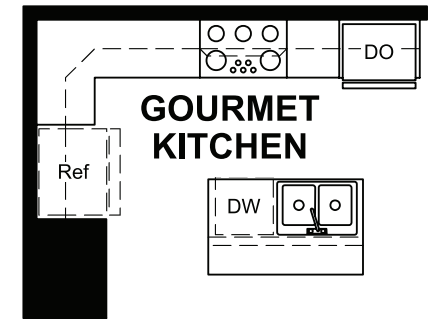
MAIN FLOOR



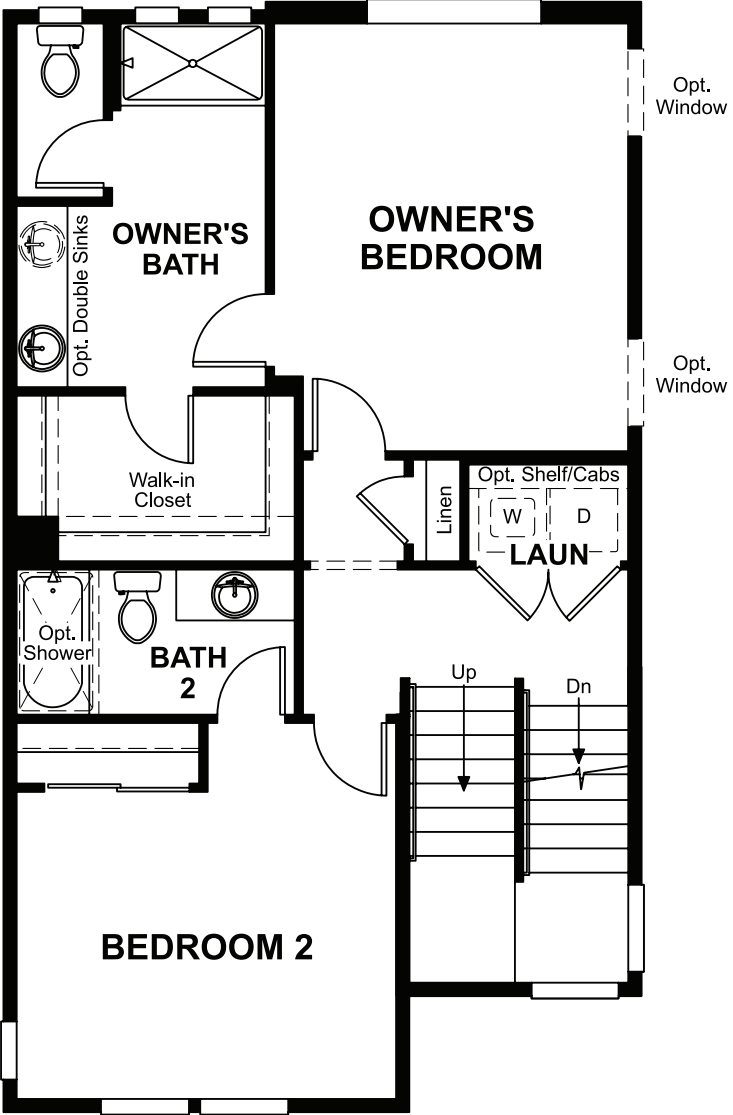
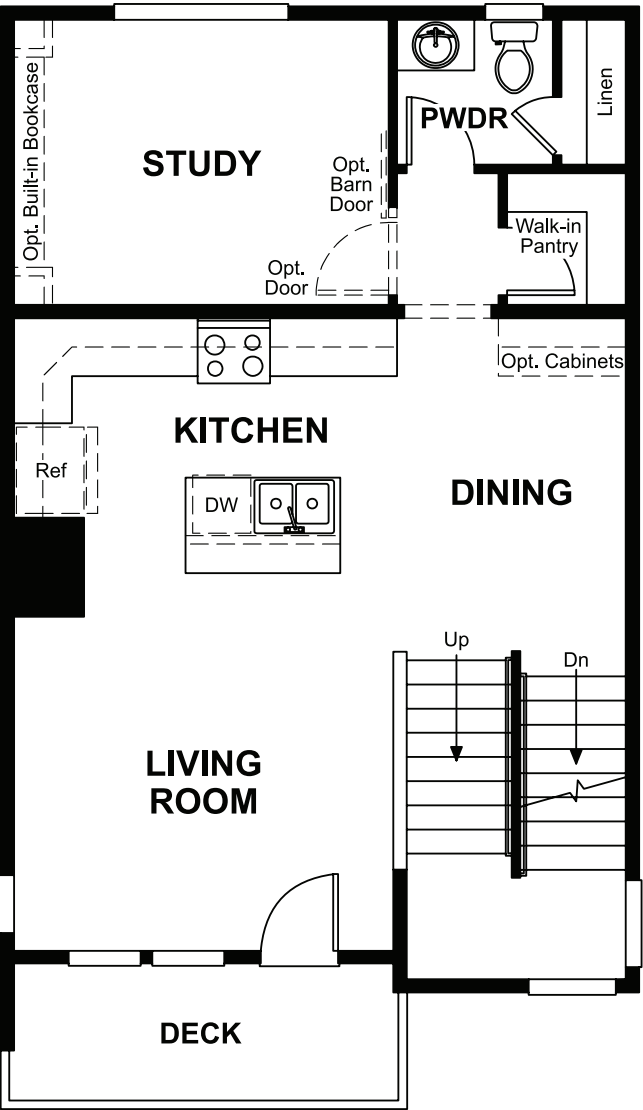
OPT. BEDROOM 3/BATH 3



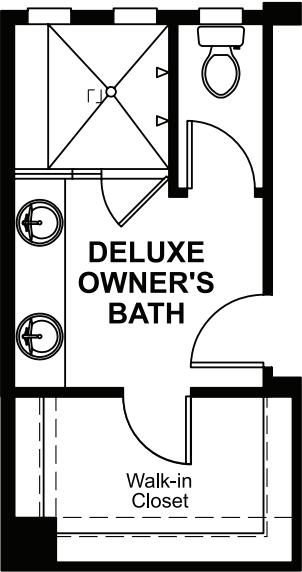
OPT. EXTENDED KITCHEN ISLAND



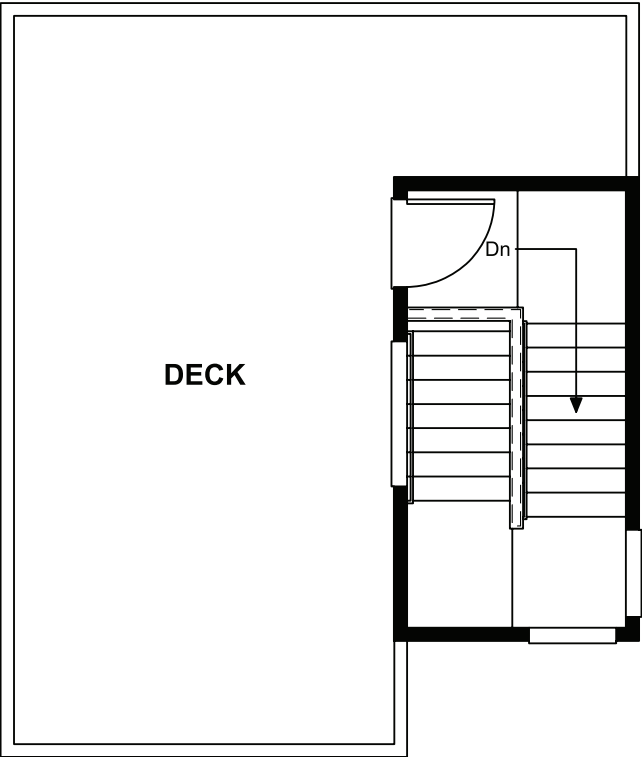
OPT. GOURMET KITCHEN



UPPER FLOOR



OPT. DELUXE OWNER'S BATH



ROOFTOP TERRACE