

THE ROSEWOOD

Approx. 1,970 sq. ft. | 3 to 4 bed | 2.5 bath | 2-car garage | Plan #J894



ELEVATION M

ABOUT THE ROSEWOOD

The paired Rosewood plan offers an open-concept main floor that's ideal for entertaining. A large kitchen featuring a generous pantry and center island overlooks a spacious great room and a dining nook with an adjacent patio. A powder room and mudroom are also included. Upstairs, you'll find a lavish primary suite showcasing an immense walk-in closet and a private bath with optional double sinks. A laundry room, two additional bedrooms with a shared bath, and a versatile loft that can be optioned as a fourth bedroom round out the floor. Make this home your own with a deluxe primary bath and a relaxing covered patio!

HOME GALLERY LOCATION:

Jacksonville Home Gallery[™] | 10255 Fortune Parkway, Suite 150 | Jacksonville, FL 32256 | **904.541.2555**

*This information is presented for education purposes only. The HERS index for a confirmed rating will be determined by a third-party HERS rater based on data gathered from on-site observations and, if required, testing of rated features for a home as featured, optioned, located, oriented and/or built.

+Standard new home is based on the RESNET[®] Reference Home definition with a HERS[®] index of 100 (based on the 2006 International Energy Conservation Code).

++Typical resale home is based on the U.S. Department of Energy definition with a HERS[®] index of 130.

^RESNET[®] has developed the HERS[®] index to indicate the comparative efficiencies of homes. It is no guarantee that energy efficiencies will be achieved.



Floor plans and renderings are conceptual drawings and may vary from actual plans and homes as built. Options and features may not be available on all homes and are subject to change without notice. Actual homes may vary from photos and/or drawings which show upgraded landscaping and may not represent the lowest-priced homes in the community. Features may include optional upgrades and may not be available on all homes. Square footage numbers are approximate and are subject to change without notice. Prices, specifications and availability subject to change without notice. ©2023 Richmond American Homes, Richmond American Homes of Florida, LP, CBC1257429 03/31/2023

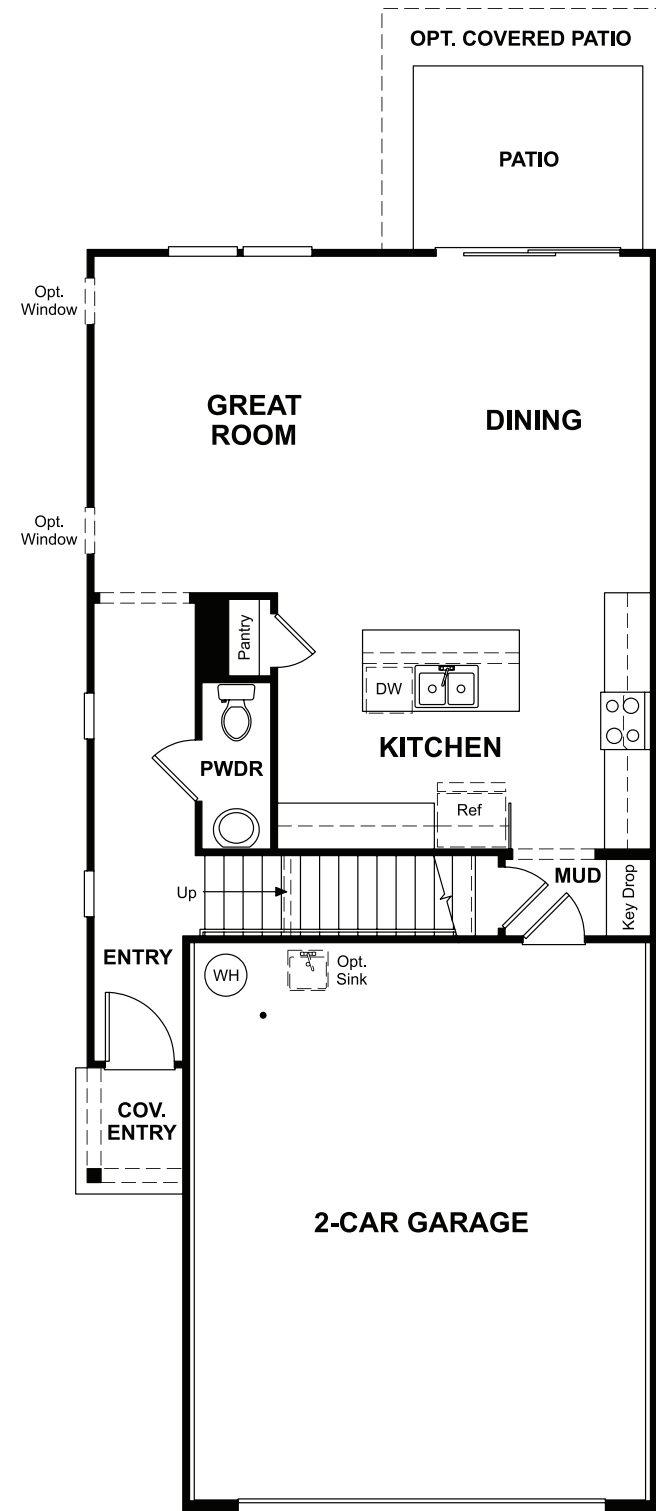


ELEVATION K

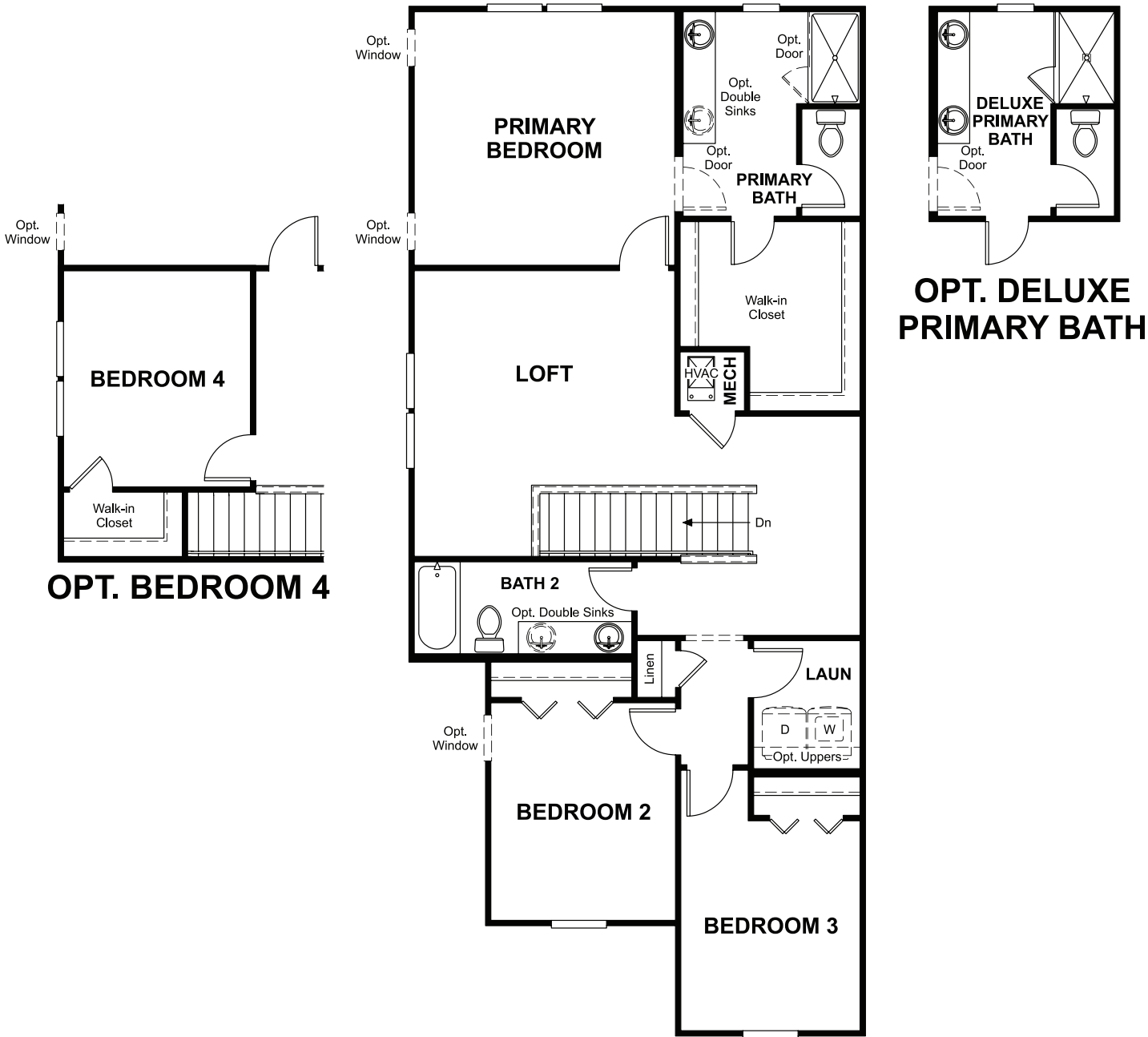


ELEVATION L

MAIN FLOOR



SECOND FLOOR



THIS PLAN’S PROJECTED
HERS® INDEX = 63*
Projected rating based on plans – field confirmation required

How does this floor plan rate?
Take a look: **100** = standard new home™ **130** = typical resale home™
The lower the number, the better! Refer to the RESNET® HERS index brochure
or go to **RESNET.us** and **HERSindex.com**

What’s a HERS® index? HERS stands for Home Energy Rating System, a system created by RESNET® to measure home energy efficiency.^
A projected HERS index or rating is a computer simulation performed prior to construction by a third-party HERS rater using RESNET-accredited rating software, rated feature and specification data derived from home plans, features and specifications, and other data selected or assumed by the rater. The projected HERS index is approximate and is subject to change without notice. Actual results will vary.