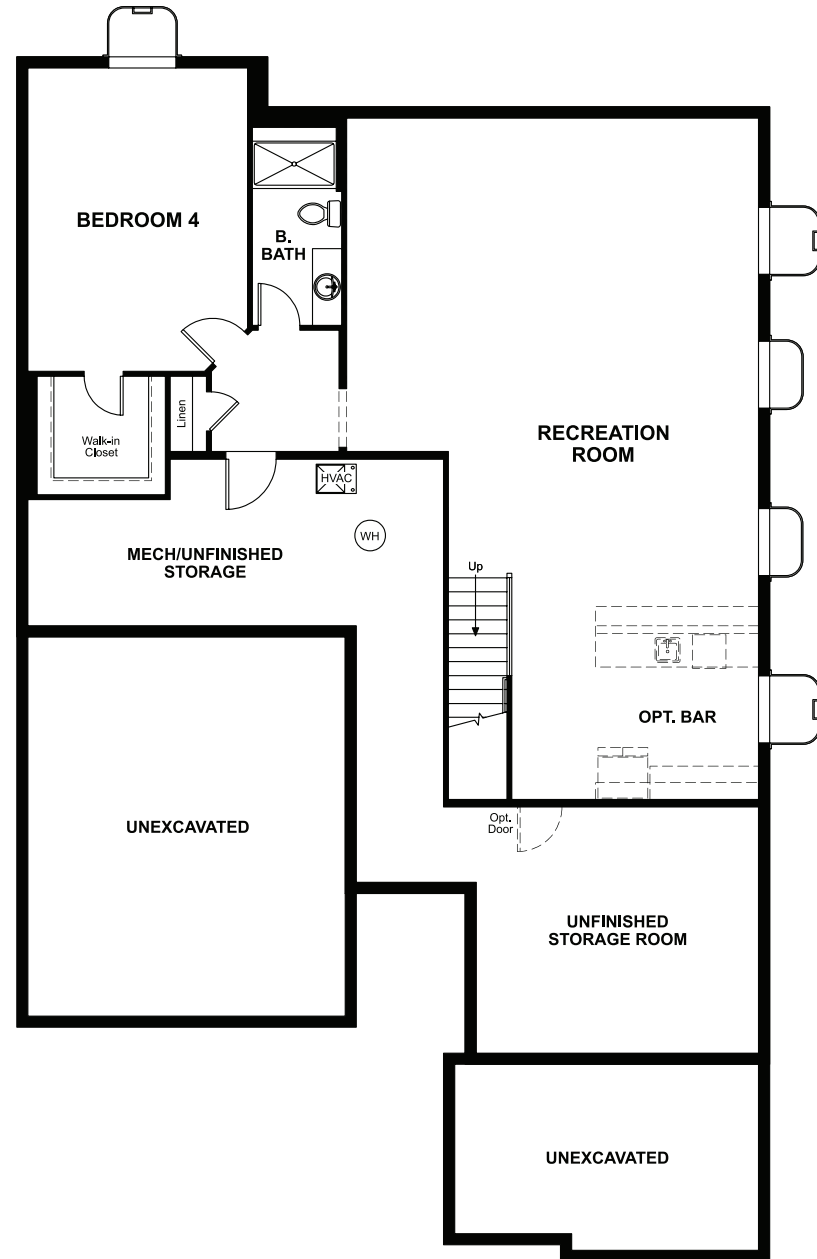


BASEMENT



OPT. FINISHED BASEMENT

COMMUNITY LOCATION:

Settler's Crossing | 18950 E. 96<sup>th</sup> Place | Commerce City, CO 80022 | 303.850.5750

DESIGN CENTER LOCATION:

Denver Metro Home Gallery™ | 8000 E. Belleview Avenue, Suite C-12 | Greenwood Village, CO 80111 | 888.402.4663



Floor plans and renderings are conceptual drawings and may vary from actual plans and homes as built. Options and features may not be available on all homes and are subject to change without notice. Actual homes may vary from photos and/or drawings which show upgraded landscaping and may not represent the lowest-priced homes in the community. Features may include optional upgrades and may not be available on all homes. Prices, specifications and availability are subject to change without notice. Square footage is approximate and subject to change without notice. ©2021 Richmond American Homes, Richmond American Homes of Colorado, Inc. 10/8/2021



ELEVATION D

ABOUT THE TYLER

Seeking a ranch-style floor plan with an open layout for entertaining? Put the Tyler at the top of your list! It offers an inviting great room, a generous dining room and an impressive kitchen with a center island, walk-in pantry and optional gourmet features. A luxurious master suite boasts a private bath and immense walk-in closet and two additional bedrooms offer ample space for rest and relaxation. A covered patio and front- and side-entry garages complete the home. Personalize this plan with a fireplace, deluxe master bath and finished basement.



ELEVATION A



ELEVATION B



ELEVATION C

MAIN FLOOR

MAIN-FLOOR OPTIONS

