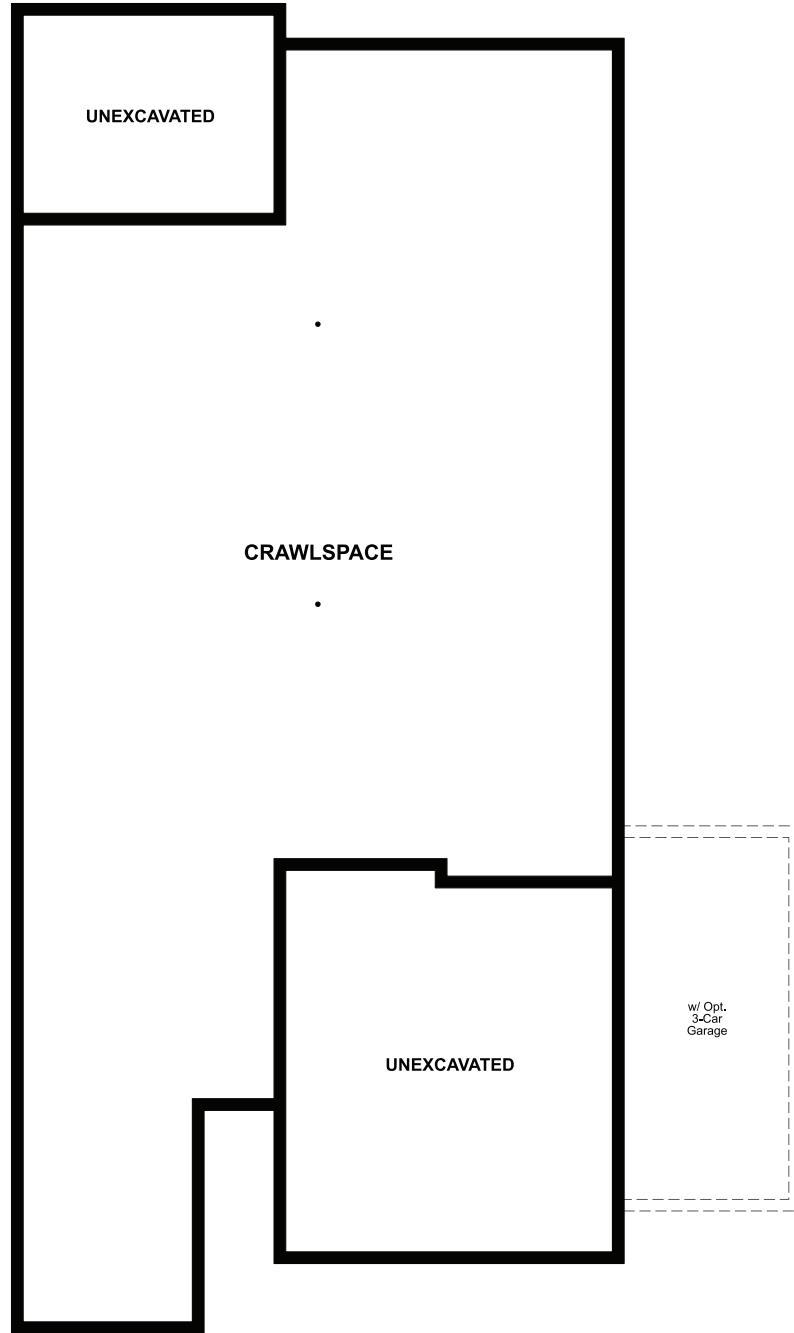


# THE JASPER

Approx. 1,900 sq. ft. | 4 bed | 2 to 3 bath | 2- to 3-car garage | Plan #D918

### CRAWL SPACE



ELEVATION D

### ABOUT THE JASPER

The ranch-style Jasper plan offers abundant living space with a range of exciting personalization options. Off the foyer, you'll find a bedroom, a bath, and a second bedroom that can be optioned as a study. An open layout is adjacent, showcasing a great room, a kitchen with a center island, and a dining area. The owner suite features a walk-in closet and an attached bath; a fourth bedroom is a few steps away, as is a mudroom. Also includes covered patio and optional 3-car garage! Make this plan your own by adding a third bath in lieu of the mudroom.

### COMMUNITY LOCATION:

Seasons at Settlers Crossing | 18960 E. 96<sup>th</sup> Place | Commerce City, CO 80022 | **303.850.5750**

### DESIGN CENTER LOCATION:

HG2 by Richmond American™ | 8000 E. Belleview Avenue, Suite D-30 | Greenwood Village, CO 80111 | **888.402.4663**




ELEVATION A



ELEVATION B



ELEVATION C

 Floor plans and renderings are conceptual drawings and may vary from actual plans and homes as built. Options and features may not be available on all homes and are subject to change without notice. Actual homes may vary from photos and/or drawings which show upgraded landscaping and may not represent the lowest-priced homes in the community. Features may include optional upgrades and may not be available on all homes. Prices, specifications and availability are subject to change without notice. Square footage is approximate and subject to change without notice. ©2021 Richmond American Homes, Richmond American Homes of Colorado, Inc. 10/22/2021

MAIN FLOOR

MAIN-FLOOR OPTIONS

