



ELEVATION C

ABOUT THE DECKER

With the Decker, your new home possibilities are practically endless! This single-style floor plan welcomes you with a charming covered entry. Inside, a spacious great room with an optional fireplace opens up to a dining area or optional sunroom. A well-appointed kitchen boasts a breakfast bar island, walk-in pantry and optional gourmet or deluxe features. Relax in a spacious primary suite, which has an oversized walk-in closet and private bath with optional walk-in shower or deluxe features. A conveniently located laundry is adjacent to a hall bath, a bedroom and a study, which can be optioned as an additional bedroom. For outdoor entertaining, opt for one of two covered patio layouts and a variety of patio door options that help bring the outdoors in! An additional single-car, side-entry garage option is also available.

COMMUNITY LOCATION:

Running Deer Estates | 16654 Evans Way | Lake Elsinore, CA 92530 | 951.234.0272

DESIGN CENTER LOCATION:

Southern California Home Gallery™ | 5171 California Avenue, Suite 110 | Irvine, CA 92617 | 909.579.3288

*This information is presented for educational purposes only. The HERS® index for a confirmed rating will be determined by a third-party HERS rater based on data gathered from on-site observations and, if required, testing of rated features for a home as featured, optioned, located, oriented and/or built.

**Standard new home is based on the RESNET® Reference Home definition with a HERS index of 100 (based on the 2006 International Energy Conservation Code).

***Typical resale home is based on the U.S. Department of Energy definition with a HERS index of 130.

^RESNET has developed the HERS index to indicate the comparative efficiencies of homes. It is no guarantee that energy efficiencies will be achieved.

Floor plans and renderings are conceptual drawings and may vary from actual plans and homes as built. Options and features may not be available on all homes and are subject to change without notice. Actual homes may vary from photos and/or drawings which show upgraded landscaping and may not represent the lowest-priced homes in the community. Features may include optional upgrades and may not be available on all homes. Prices, specifications and availability are subject to change without notice. Square footage is approximate and subject to change without notice. ©2023 Richmond American Homes, Richmond American Homes of Maryland, Inc., California Department of Real Estate – Real Estate Broker, Corporation License Number 01842595. 08/04/2023

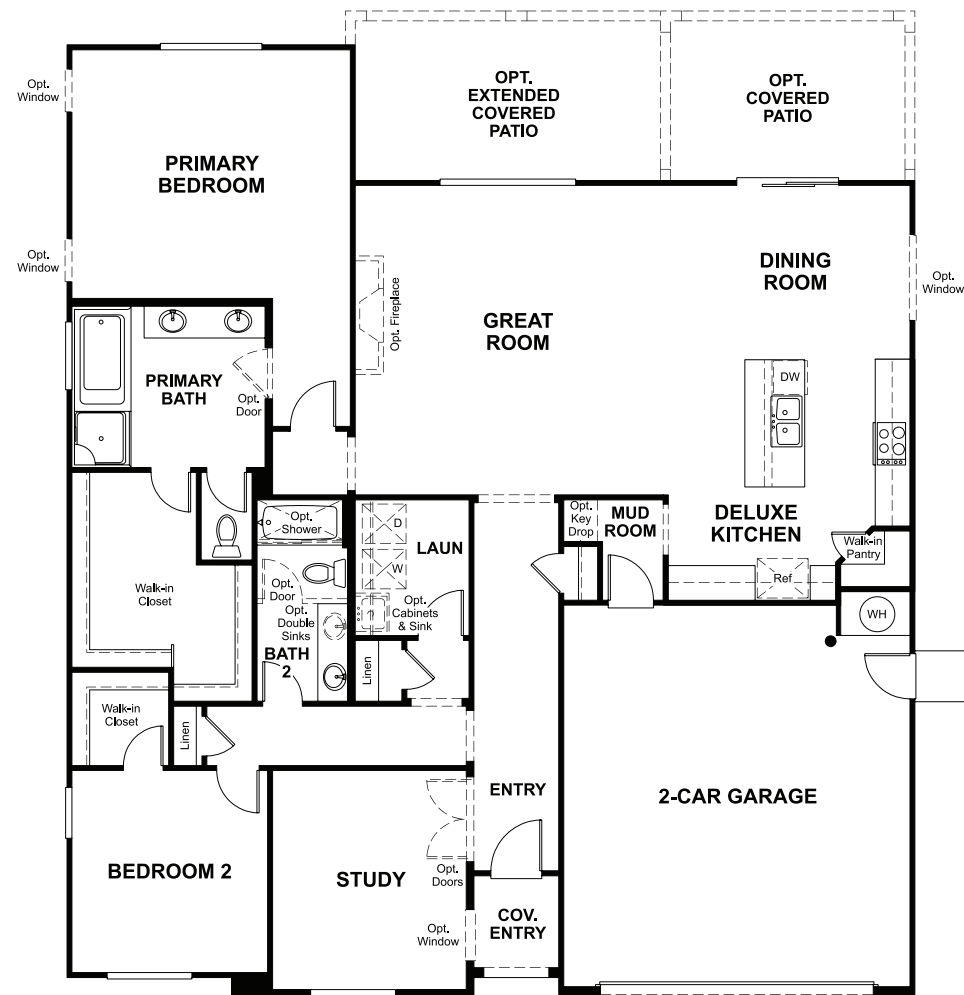


ELEVATION A

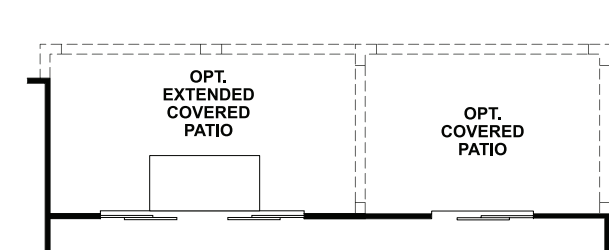


ELEVATION B

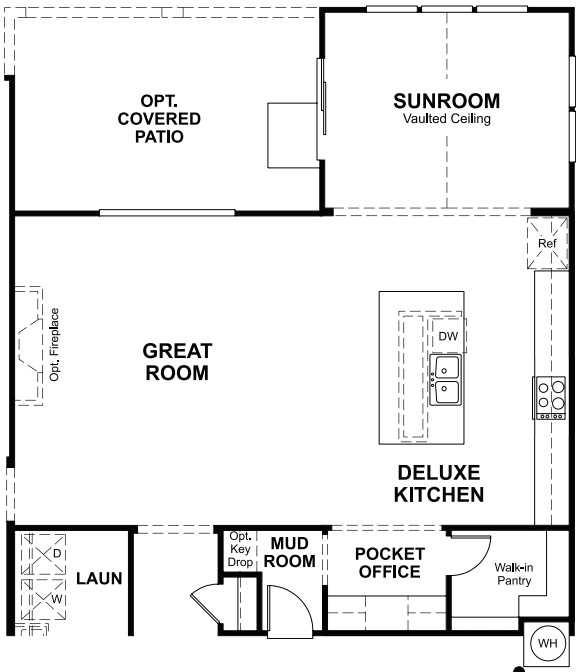
MAIN FLOOR



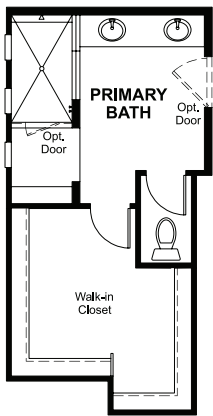
MAIN-FLOOR OPTIONS



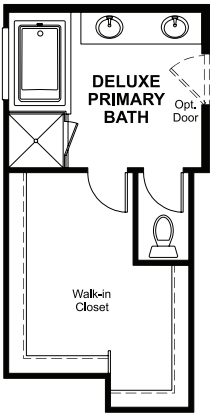
OPT. 12' CENTER-MEET DOOR
AT GREAT ROOM



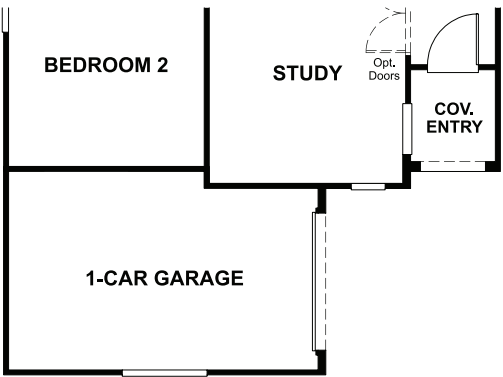
OPT. SUNROOM



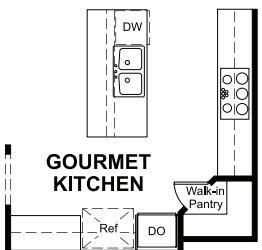
OPT. PRIMARY BATH
WALK-IN SHOWER



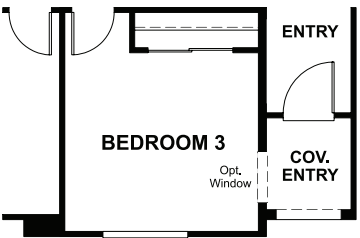
OPT. DELUXE
PRIMARY BATH



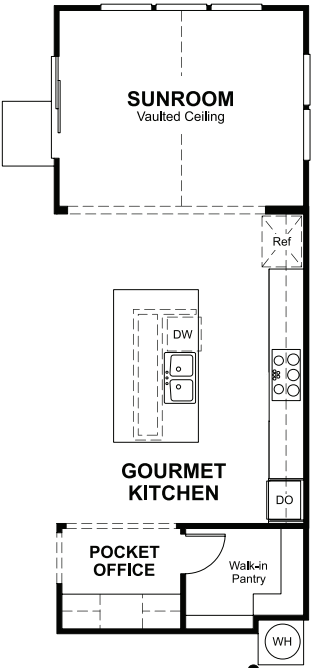
OPT. SIDE TURN GARAGE



OPT. GOURMET
KITCHEN



OPT. BEDROOM 3



OPT. SUNROOM W/
GOURMET KITCHEN

THIS PLAN'S PROJECTED
HERS® INDEX = 25*
Projected rating based on plans – field confirmation required

How does this floor plan rate?
Take a look: **100** = standard new home™ **130** = typical resale home™
The lower the number, the better! Refer to the RESNET® HERS index brochure
or go to **RESNET.us** and **HERSindex.com**

What's a HERS® index? HERS stands for Home Energy Rating System, a system created by RESNET® to measure home energy efficiency.^
A projected HERS index or rating is a computer simulation performed prior to construction by a third-party HERS rater using RESNET-accredited
rating software, rated feature and specification data derived from home plans, features and specifications, and other data selected or assumed by
the rater. The projected HERS index is approximate and is subject to change without notice. Actual results will vary.