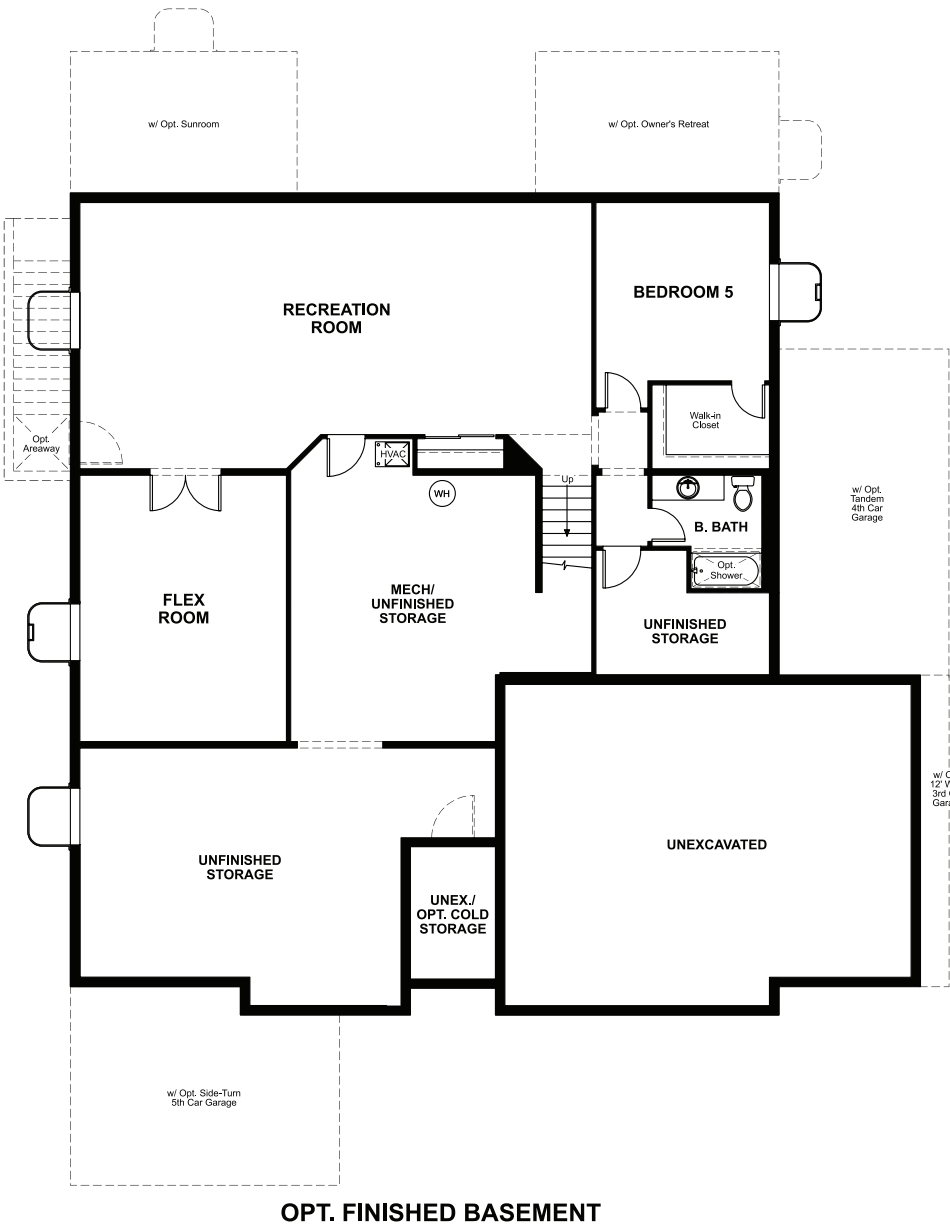


BASEMENT



ELEVATION C

ABOUT THE DANIEL II

The ranch-style Daniel II plan greets guests with a charming covered entry. Inside, you'll find a private study with double doors, a spacious great room with an optional fireplace and an optional gourmet kitchen, complete with walk-in pantry, center island and nook. An elegant owner's suite featuring an immense walk-in closet and attached bath is separated from two additional bedrooms for privacy. Personalization options include a sunroom, tech center, owner's retreat, finished basement and 4-car tandem garage.

COMMUNITY LOCATION:

Teton Ranch | 12507 S. Wapiti Ridge Lane | Herriman, UT 84096 | **801.545.3429**

DESIGN CENTER LOCATION:

Utah Home Gallery™ | 849 W. LeVoy Drive, Suite 108 | Salt Lake City, UT 84123 | **801.545.5167**

\*This information is presented for educational purposes only. The HERS® index for a confirmed rating will be determined by a third-party HERS rater based on data gathered from on-site observations and, if required, testing of rated features for a home as featured, optioned, located, oriented and/or built.

\*\*Standard new home is based on the RESNET® Reference Home definition with a HERS index of 100 (based on the 2006 International Energy Conservation Code).

\*\*\*Typical resale home is based on the U.S. Department of Energy definition with a HERS index of 130.

^RESNET has developed the HERS index to indicate the comparative efficiencies of homes. It is no guarantee that energy efficiencies will be achieved.

Floor plans and renderings are conceptual drawings and may vary from actual plans and homes as built. Actual homes may vary from photos and/or drawings, which show upgraded landscaping and may not represent the lowest-priced homes in the community. Options and features may not be available on all homes and are subject to change without notice. Square footage and plan dimensions are approximate and may show approximate total available footage with finished and unfinished footages listed separately. Unfinished areas may be available to be finished. Finished basement areas below grade may vary in value from finished above-grade areas. Prices, specifications and availability are subject to change without notice. ©2021 Richmond American Homes, Richmond American Homes of Utah, Inc. (866.400.4131). 12/13/2021



ELEVATION A



ELEVATION B

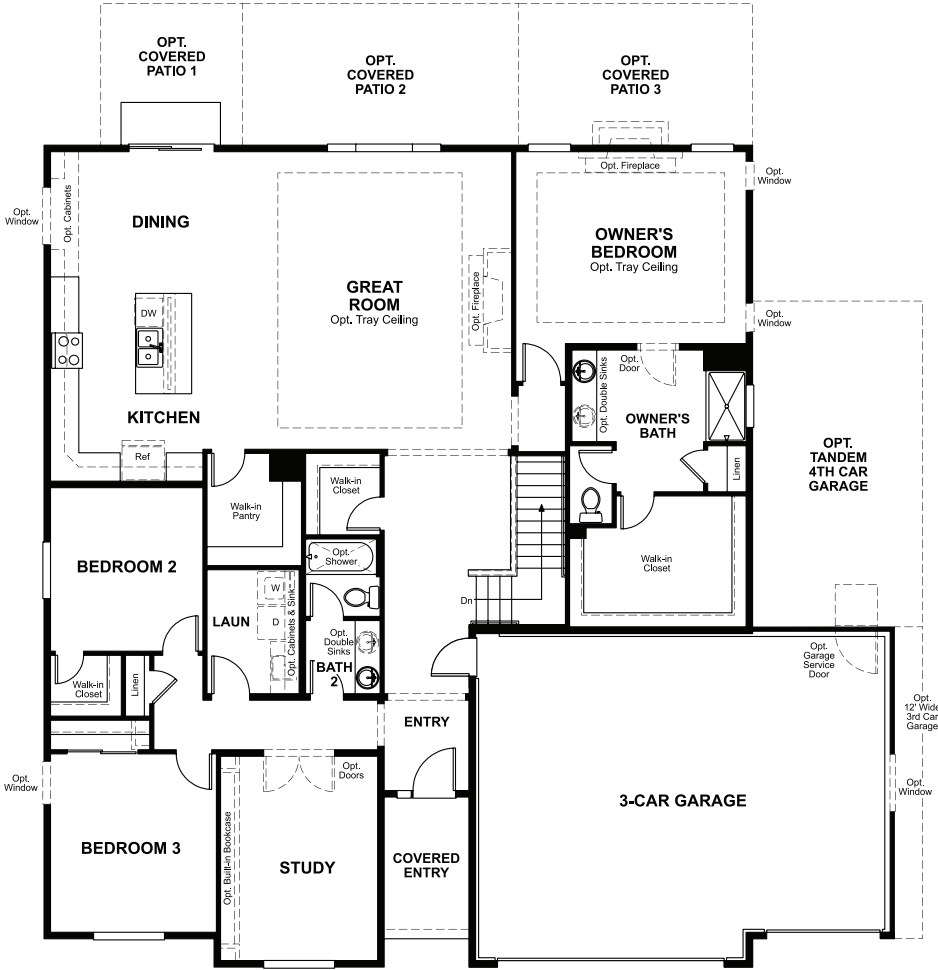


ELEVATION D

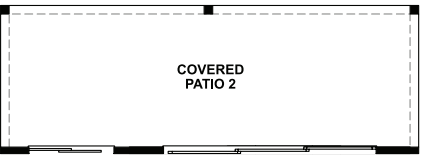


ELEVATION E

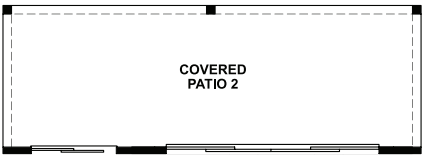
MAIN FLOOR



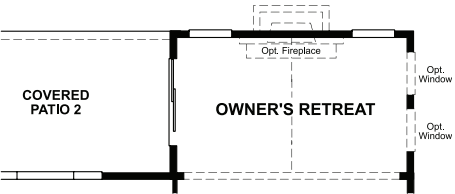
MAIN-FLOOR OPTIONS



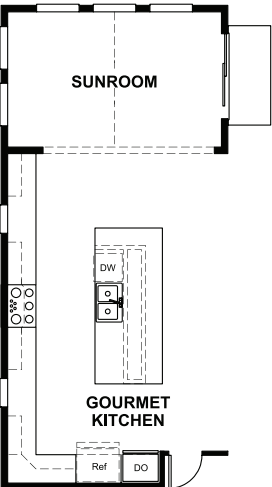
OPT. MULTI-SLIDE DOOR  
AT GREAT ROOM



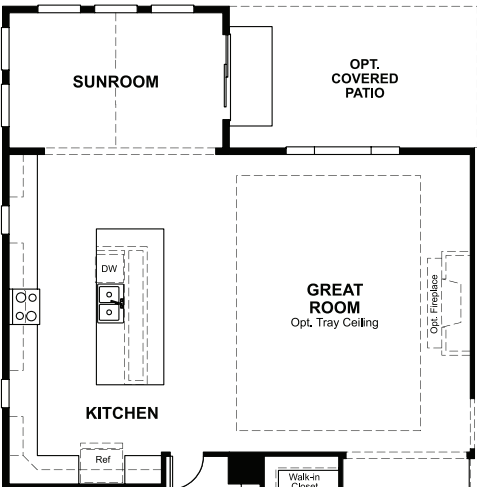
OPT. CENTER-MEET DOOR  
AT GREAT ROOM



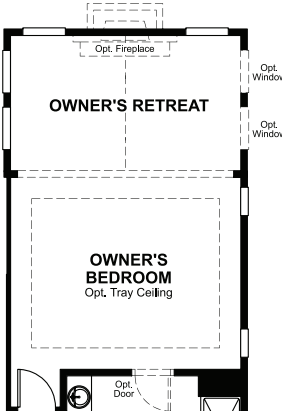
OPT. SLIDING-GLASS DOOR  
AT OWNER'S RETREAT



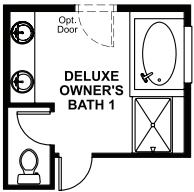
OPT. GOURMET KITCHEN  
W/ OPT. SUNROOM



OPT. SUNROOM



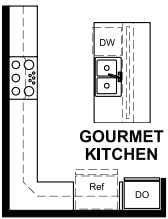
OPT. RETREAT



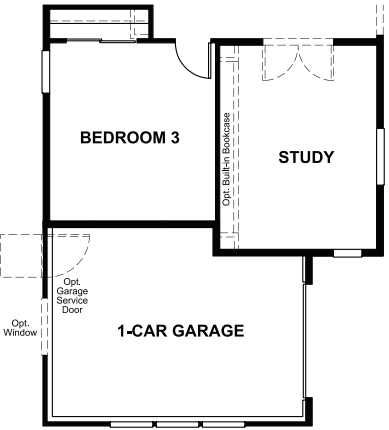
OPT. DELUXE  
OWNER'S BATH 1



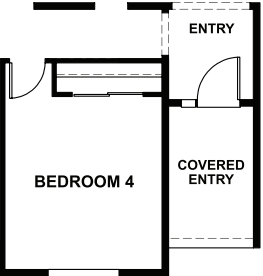
OPT. DELUXE  
OWNER'S BATH 2



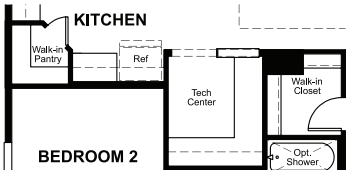
OPT. GOURMET  
KITCHEN



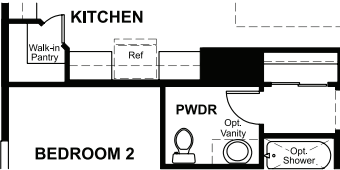
OPT. SIDE-TURN GARAGE



OPT. BEDROOM 4



OPT. TECH CENTER



OPT. POWDER ROOM

THIS PLAN'S PROJECTED  
**HERS® INDEX = 58\***  
Projected rating based on plans – field confirmation required

**How does this floor plan rate?**  
Take a look: **100** = standard new home™ **130** = typical resale home™  
The lower the number, the better! Refer to the RESNET® HERS index brochure  
or go to **RESNET.us** and **HERSindex.com**

**What's a HERS® index?** HERS stands for Home Energy Rating System, a system created by RESNET® to measure home energy efficiency.^  
A projected HERS index or rating is a computer simulation performed prior to construction by a third-party HERS rater using RESNET-accredited rating software, rated feature and specification data derived from home plans, features and specifications, and other data selected or assumed by the rater. The projected HERS index is approximate and is subject to change without notice. Actual results will vary.