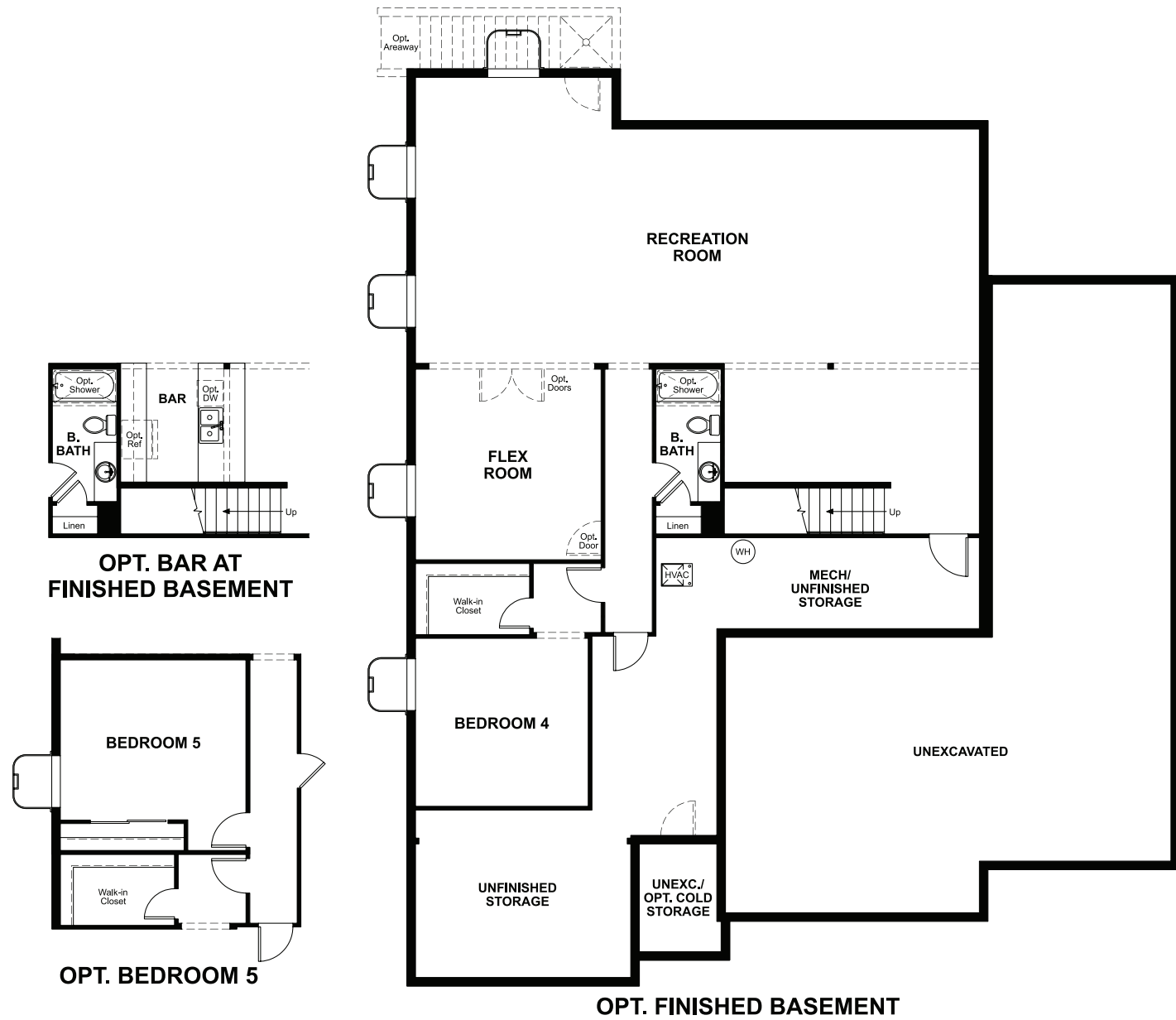


BASEMENT



ELEVATION C

ABOUT THE HARRIS

The ranch-style Harris plan offers an inviting open layout showcasing a large kitchen with a convenient center island, a dining nook and a great room. Adjacent is the owner's suite, featuring an oversize walk-in closet and a private bath with optional deluxe features. Two bedrooms and a full bath are close by, as well as a dining room that can be optioned as a study. Includes 2-car garage and attached RV Garage! Additional options include a finished basement and a covered patio.



ELEVATION A



ELEVATION B



ELEVATION D

COMMUNITY LOCATION:

Teton Ranch | 12507 S. Wapiti Ridge Lane | Herriman, UT 84096 | 801.545.3429

DESIGN CENTER LOCATION:

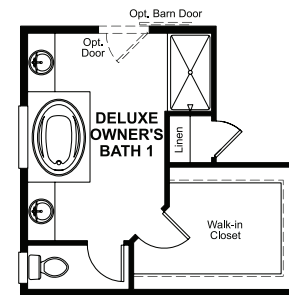
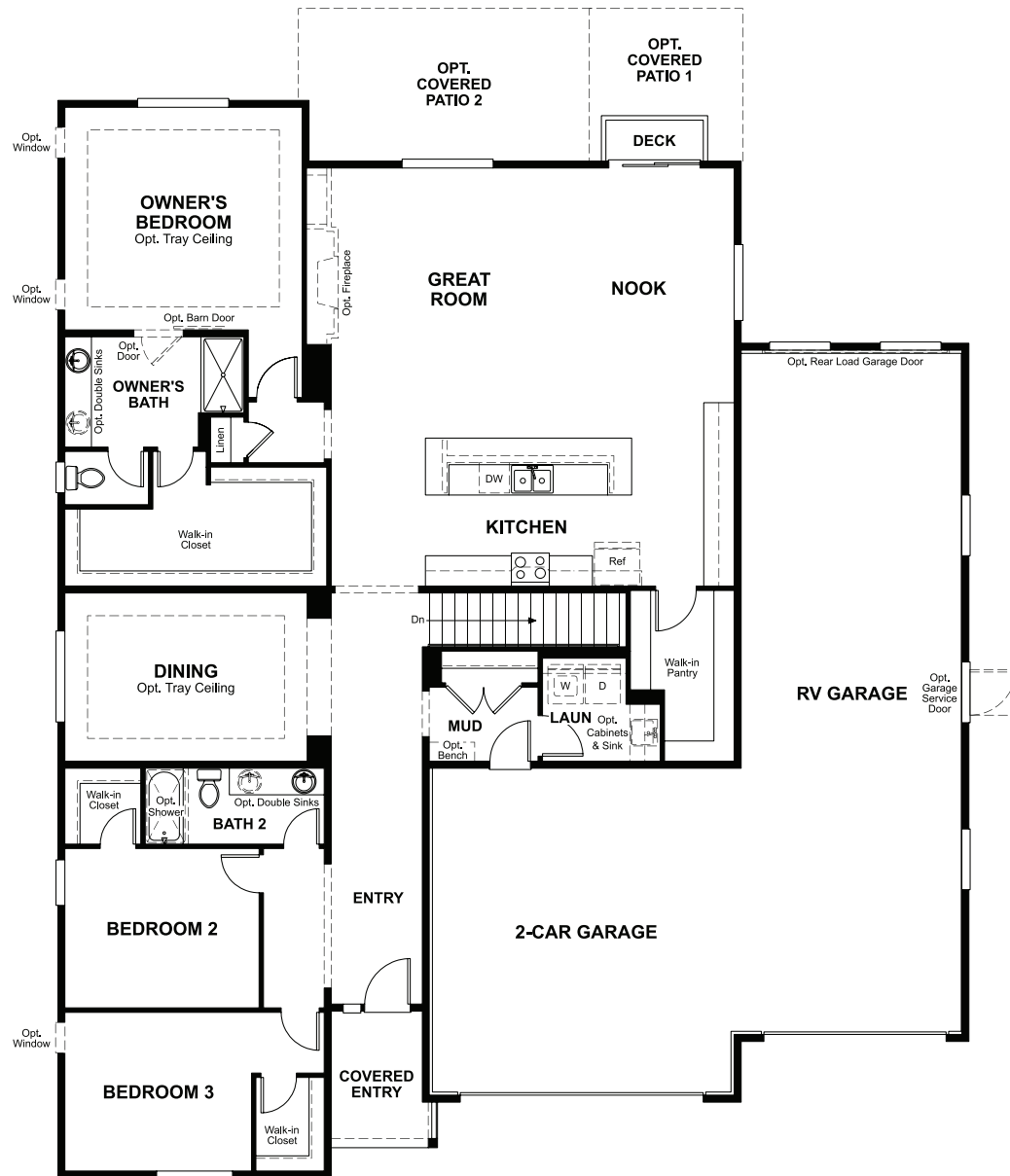
Utah Home Gallery™ | 849 W. LeVoy Drive, Suite 108 | Salt Lake City, UT 84123 | 801.545.5167



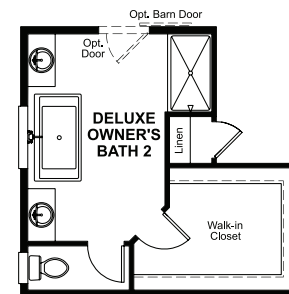
Floor plans and renderings are conceptual drawings and may vary from actual plans and homes as built. Options and features may not be available on all homes and are subject to change without notice. Actual homes may vary from photos and/or drawings which show upgraded landscaping and may not represent the lowest-priced homes in the community. Features may include optional upgrades and may not be available on all homes. Prices, specifications and availability are subject to change without notice. Square footage is approximate and subject to change without notice. ©2021 Richmond American Homes, Richmond American Homes of Utah, Inc. (866.400.4131). 12/13/2021

MAIN FLOOR

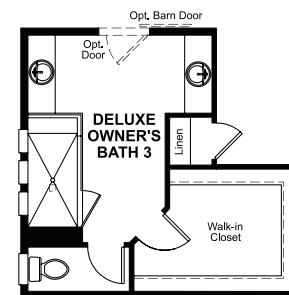
MAIN-FLOOR OPTIONS



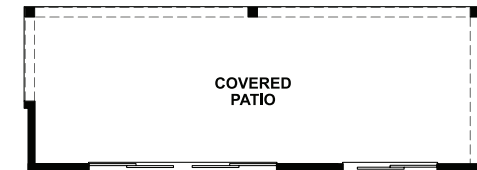
OPT. DELUXE OWNER'S BATH 1



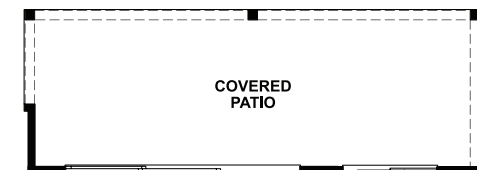
OPT. DELUXE OWNER'S BATH 2



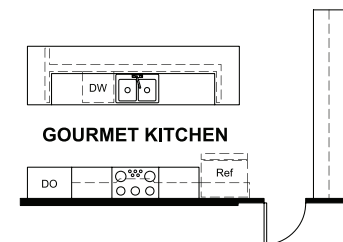
OPT. DELUXE OWNER'S BATH 3



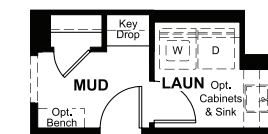
OPT. CENTER-MEET DOOR AT GREAT ROOM



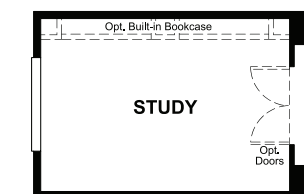
OPT. MULTI-SLIDE DOOR AT GREAT ROOM



OPT. GOURMET KITCHEN



OPT. KEY DROP AT MUD



OPT. STUDY