



ELEVATION C

ABOUT THE ALDEN

In search of a ranch-style floor plan you can really make your own? Look no further than the Alden! This versatile home opens with two bedrooms flanking a bath; these can instead be optioned as an expansive guest suite, complete with a lounge area, a private bath and a private laundry. The foyer leads to an airy, open layout showcasing an impressive kitchen with a center island, a breakfast nook and a great room with access to the covered patio. The luxurious owner's suite is adjacent, and includes an oversized walk-in closet and an attached bath with three deluxe options, including a walk-in shower. A laundry, a mudroom and a powder room are conveniently located in the center of the home. Additional personalization options include gourmet kitchen features, a fourth bedroom and third bathroom in place of the tandem garage spot and powder room, and more.

COMMUNITY LOCATION:

Landmark at Verrado | 20165 W. Montecito Avenue | Buckeye, AZ 85396 | 623.215.6770

DESIGN CENTER LOCATION:


Phoenix Home Gallery™ | 16427 N. Scottsdale Road, Suite 175 | Scottsdale, AZ 85254 | 877.444.1485 (Select Option 3)

*This information is presented for educational purposes only. The HERS® index for a confirmed rating will be determined by a third-party HERS rater based on data gathered from on-site observations and, if required, testing of rated features for a home as featured, optioned, located, oriented and/or built.

**Standard new home is based on the RESNET® Reference Home definition with a HERS index of 100 (based on the 2006 International Energy Conservation Code).

***Typical resale home is based on the U.S. Department of Energy definition with a HERS index of 130.

^RESNET has developed the HERS index to indicate the comparative efficiencies of homes. It is no guarantee that energy efficiencies will be achieved.



Floor plans and renderings are conceptual drawings and may vary from actual plans and homes as built. Options and features may not be available on all homes and are subject to change without notice. Actual homes may vary from photos and/or drawings which show upgraded landscaping and may not represent the lowest-priced homes in the community. Features may include optional upgrades and may not be available on all homes. Prices, specifications and availability are subject to change without notice. Square footage is approximate and subject to change without notice. ©2022 Richmond American Homes, Richmond American Homes of Arizona, Inc. (a public report is available on the state real estate department's website), Richmond American Construction, Inc. ROC #200612. 4/11/2022

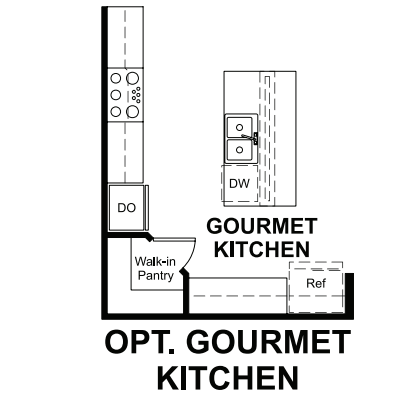
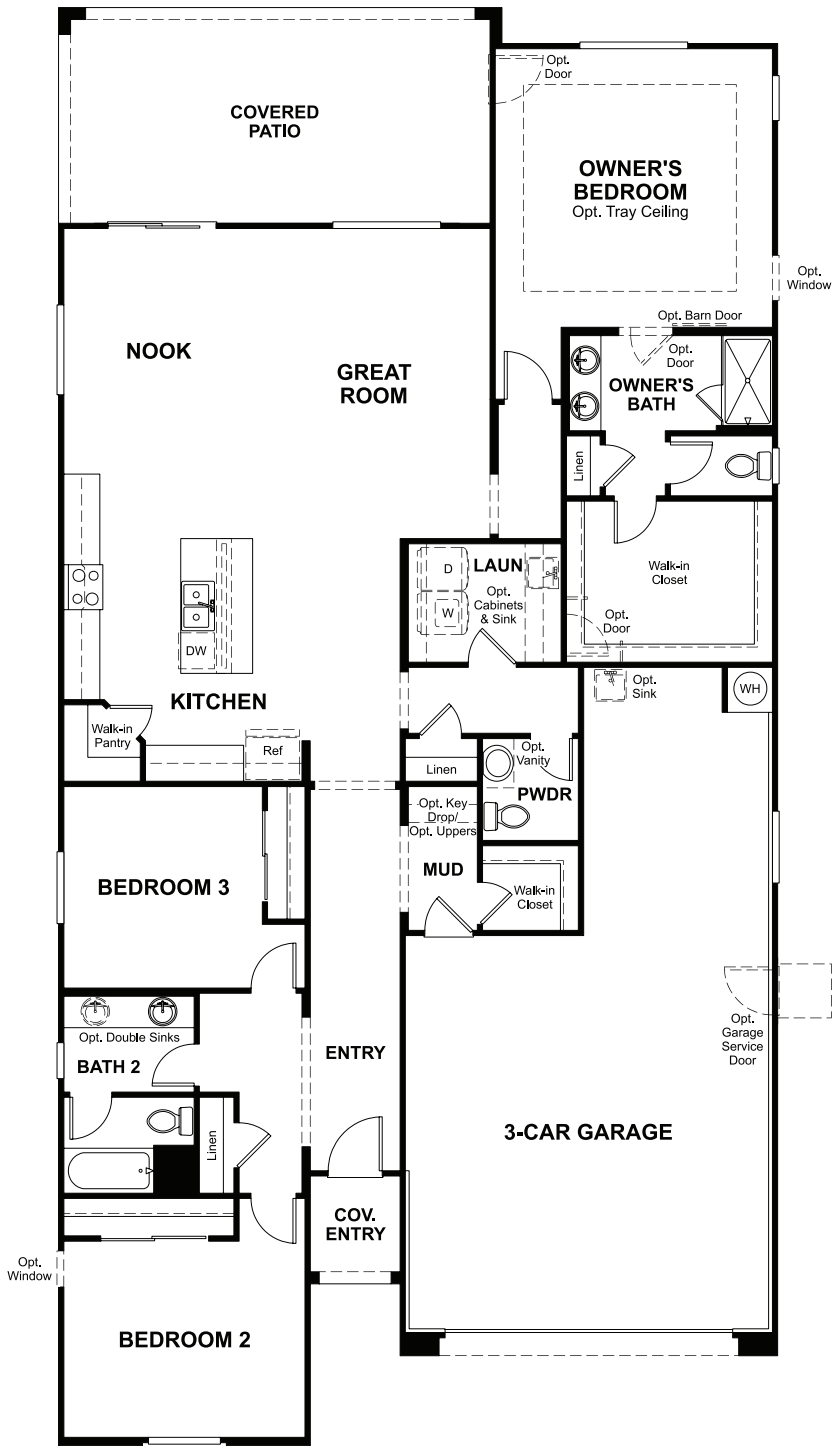


ELEVATION A

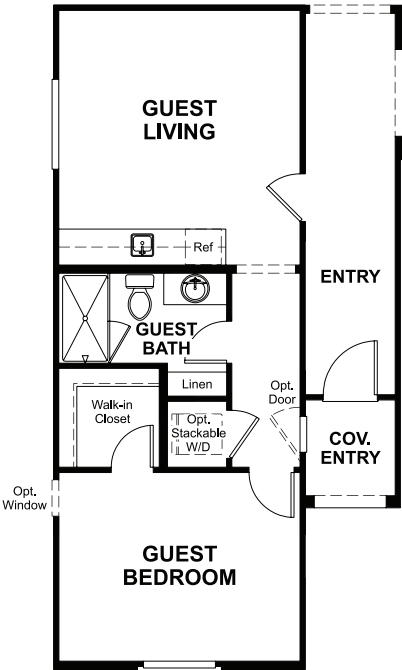


ELEVATION B

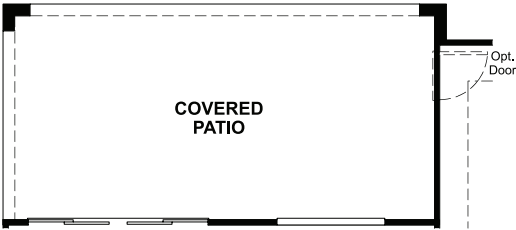
MAIN FLOOR



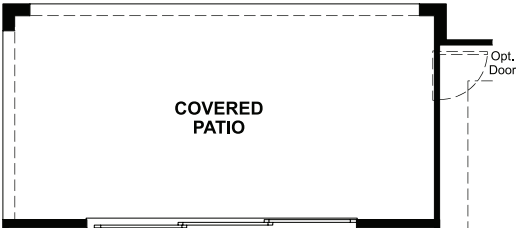
OPT. GOURMET KITCHEN



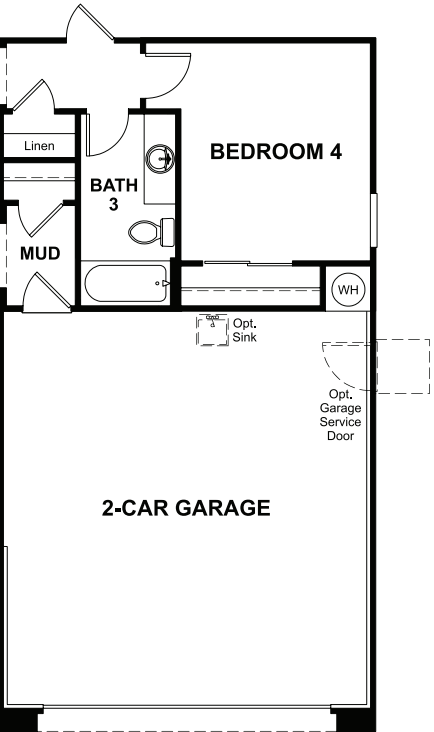
OPT. GUEST SUITE



OPT. CENTER-MEET DOOR AT NOOK

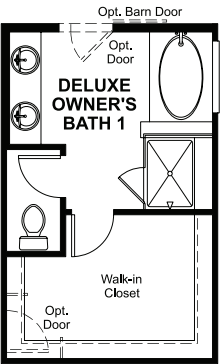


OPT. MULTI-SLIDE DOOR AT GREAT ROOM

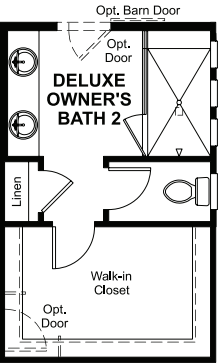


OPT. BEDROOM 4/BATH 3

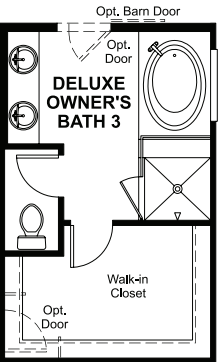
MAIN-FLOOR OPTIONS



OPT. DELUXE OWNER'S BATH #1



OPT. DELUXE OWNER'S BATH #2



OPT. DELUXE OWNER'S BATH #3

THIS PLAN'S PROJECTED
HERS® INDEX = 59*
Projected rating based on plans – field confirmation required

How does this floor plan rate?
Take a look: **100** = standard new home™ **130** = typical resale home™
The lower the number, the better! Refer to the RESNET® HERS index brochure
or go to **RESNET.us** and **HERSindex.com**

What's a HERS® index? HERS stands for Home Energy Rating System, a system created by RESNET® to measure home energy efficiency.^
A projected HERS index or rating is a computer simulation performed prior to construction by a third-party HERS rater using RESNET-accredited rating software, rated feature and specification data derived from home plans, features and specifications, and other data selected or assumed by the rater. The projected HERS index is approximate and is subject to change without notice. Actual results will vary.