



ELEVATION C

ABOUT THE AMETHYST

The ranch-style Amethyst plan greets guests with a charming covered entry. Inside, you'll find a quiet study and an open great room that flows into an inviting kitchen featuring a center island and generous pantry. A large owner's suite boasts an immense walk-in closet and attached bath with optional double sinks, and is separated from a secondary bedroom and bathroom for privacy. A convenient laundry room is also included. Make this home your own with exciting options like a third bedroom in lieu of the study, a wide covered patio and a 3-car garage!

COMMUNITY LOCATION:

Seasons at The Farm | 697 Cardoso Dairy Drive | Galt, CA 95632 | **209.650.7023**

DESIGN CENTER LOCATION:

Northern California Home Gallery™ | One Harbor Center, Suite 150 | Suisun City, CA 94585 | **707.416.2800**



Floor plans and renderings are conceptual drawings and may vary from actual plans and homes as built. Options and features may not be available on all homes and are subject to change without notice. Actual homes may vary from photos and/or drawings which show upgraded landscaping and may not represent the lowest-priced homes in the community. Features may include optional upgrades and may not be available on all homes. Prices, specifications and availability are subject to change without notice. Square footage is approximate and subject to change without notice. ©2022 Richmond American Homes, Richmond American Homes of Maryland, Inc., California Department of Real Estate – Real Estate Broker, Corporation License Number 01842595. 03/25/2022



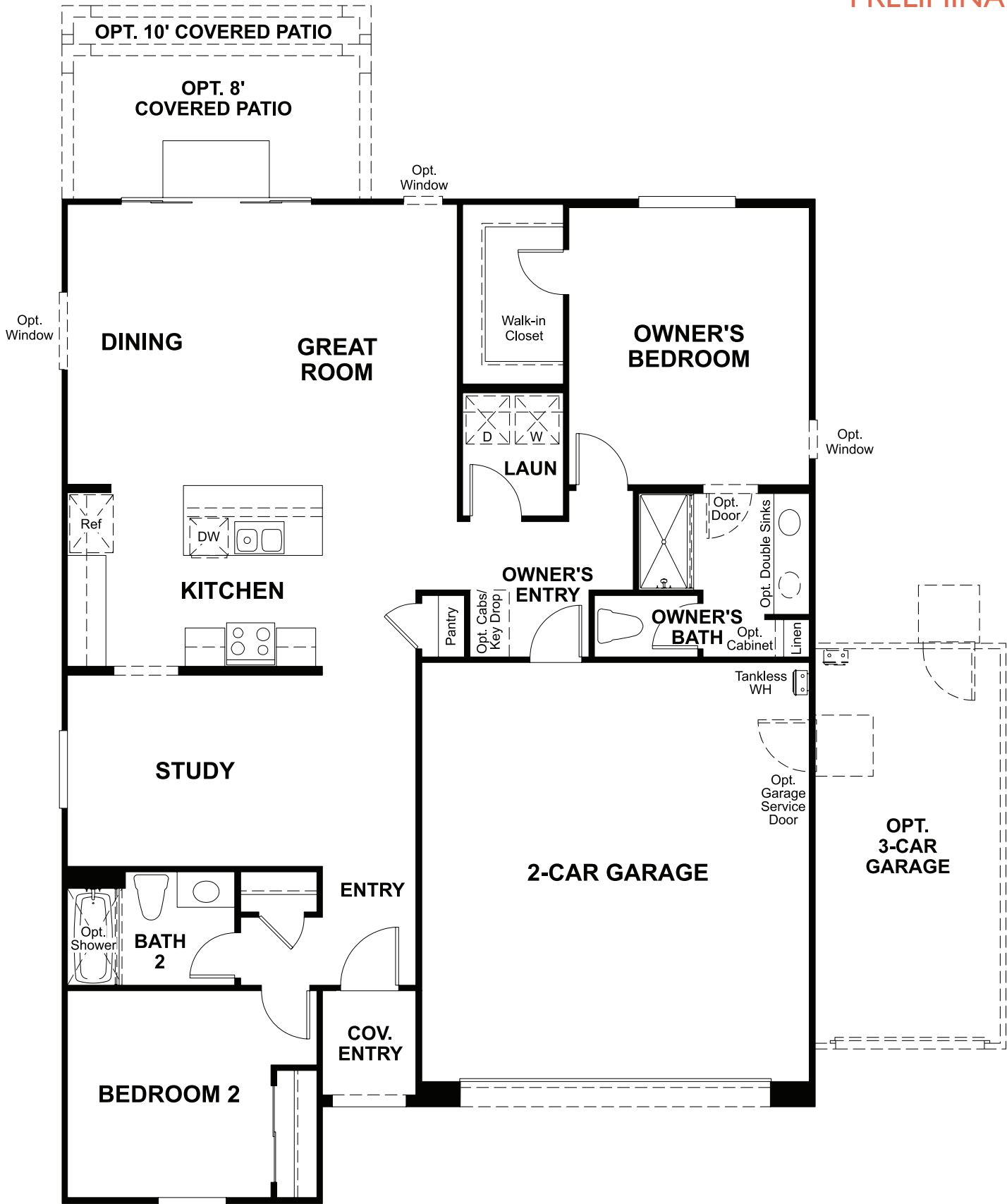
ELEVATION A



ELEVATION B

MAIN FLOOR

PRELIMINARY



MAIN-FLOOR OPTIONS

PRELIMINARY

