



ELEVATION C

ABOUT THE AGATE

The thoughtfully designed Agate floor plan offers an open layout showcasing a kitchen with a center island and breakfast nook, and a spacious great room. An adjacent owner’s suite includes an immense walk-in closet and an attached bath with double sinks, and two additional bedrooms offer ample space for rest and relaxation. You’ll also appreciate a convenient laundry and versatile flex space, which can be optioned as an additional bedroom and bath. Personalize this inviting ranch plan with a fireplace, covered patio and more!

COMMUNITY LOCATION:

Seasons at The Farm | 697 Cardoso Dairy Drive | Galt, CA 95632 | **209.650.7023**

DESIGN CENTER LOCATION:

Northern California Home GalleryTM | One Harbor Center, Suite 150 | Suisun City, CA 94585 | **707.416.2800**



Floor plans and renderings are conceptual drawings and may vary from actual plans and homes as built. Options and features may not be available on all homes and are subject to change without notice. Actual homes may vary from photos and/or drawings which show upgraded landscaping and may not represent the lowest-priced homes in the community. Features may include optional upgrades and may not be available on all homes. Prices, specifications and availability are subject to change without notice. Square footage is approximate and subject to change without notice. ©2022 Richmond American Homes, Richmond American Homes of Maryland, Inc., California Department of Real Estate – Real Estate Broker, Corporation License Number 01842595. 03/25/2022

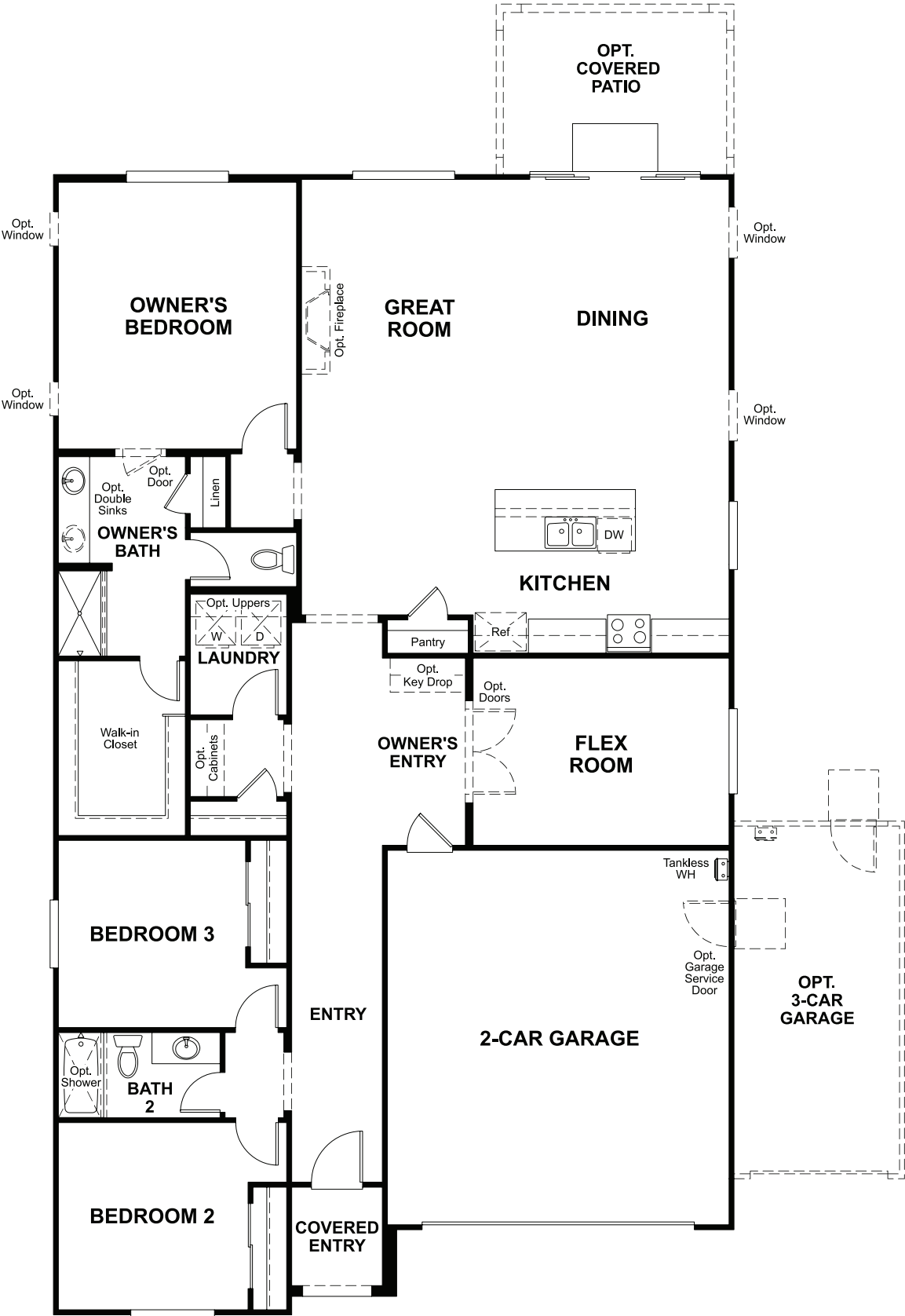


ELEVATION A



ELEVATION B

MAIN FLOOR
PRELIMINARY



MAIN-FLOOR OPTIONS
PRELIMINARY

