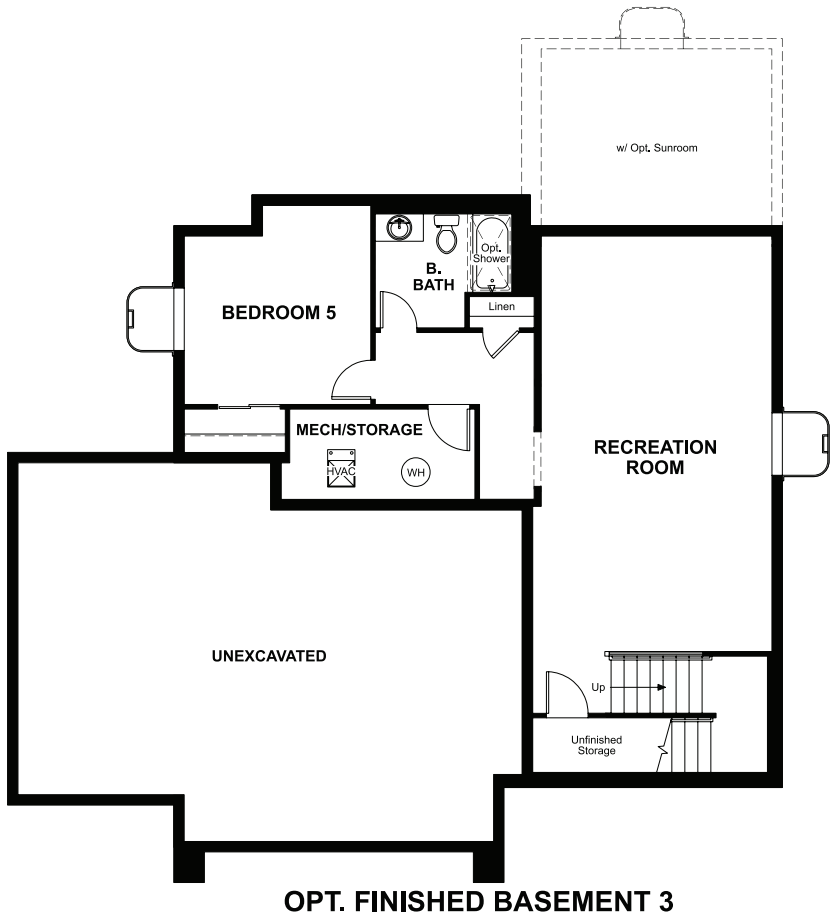


BASEMENT



OPT. FINISHED BASEMENT 3



ELEVATION C

ABOUT THE BEDFORD

The beautiful Bedford plan offers two stories of smartly designed living space. On the main floor, you'll find a spacious dining room, great room and kitchen with a center island, as well as a convenient mudroom and powder room off the 3-car garage. Upstairs, there's a versatile loft, centrally located laundry room, hall bath and three inviting bedrooms—including the owner's bedroom with walk-in closet and private bath. Options: gourmet kitchen, finished basement, deluxe owner's bath, bedroom in lieu of the loft, sunroom, and covered patio.

COMMUNITY LOCATION:

Kinston at Centerra | 6413 Union Creek Commons Drive | Loveland, CO 80538 | 303.850.5750

DESIGN CENTER LOCATION:

Denver Metro Home Gallery™ | 8000 E. Belview Avenue, Suite C-12 | Greenwood Village, CO 80111 | 888.402.4663



Floor plans and renderings are conceptual drawings and may vary from actual plans and homes as built. Options and features may not be available on all homes and are subject to change without notice. Actual homes may vary from photos and/or drawings which show upgraded landscaping and may not represent the lowest-priced homes in the community. Features may include optional upgrades and may not be available on all homes. Prices, specifications and availability are subject to change without notice. Square footage is approximate and subject to change without notice. ©2022 Richmond American Homes, Richmond American Homes of Colorado, Inc. 01/21/2022

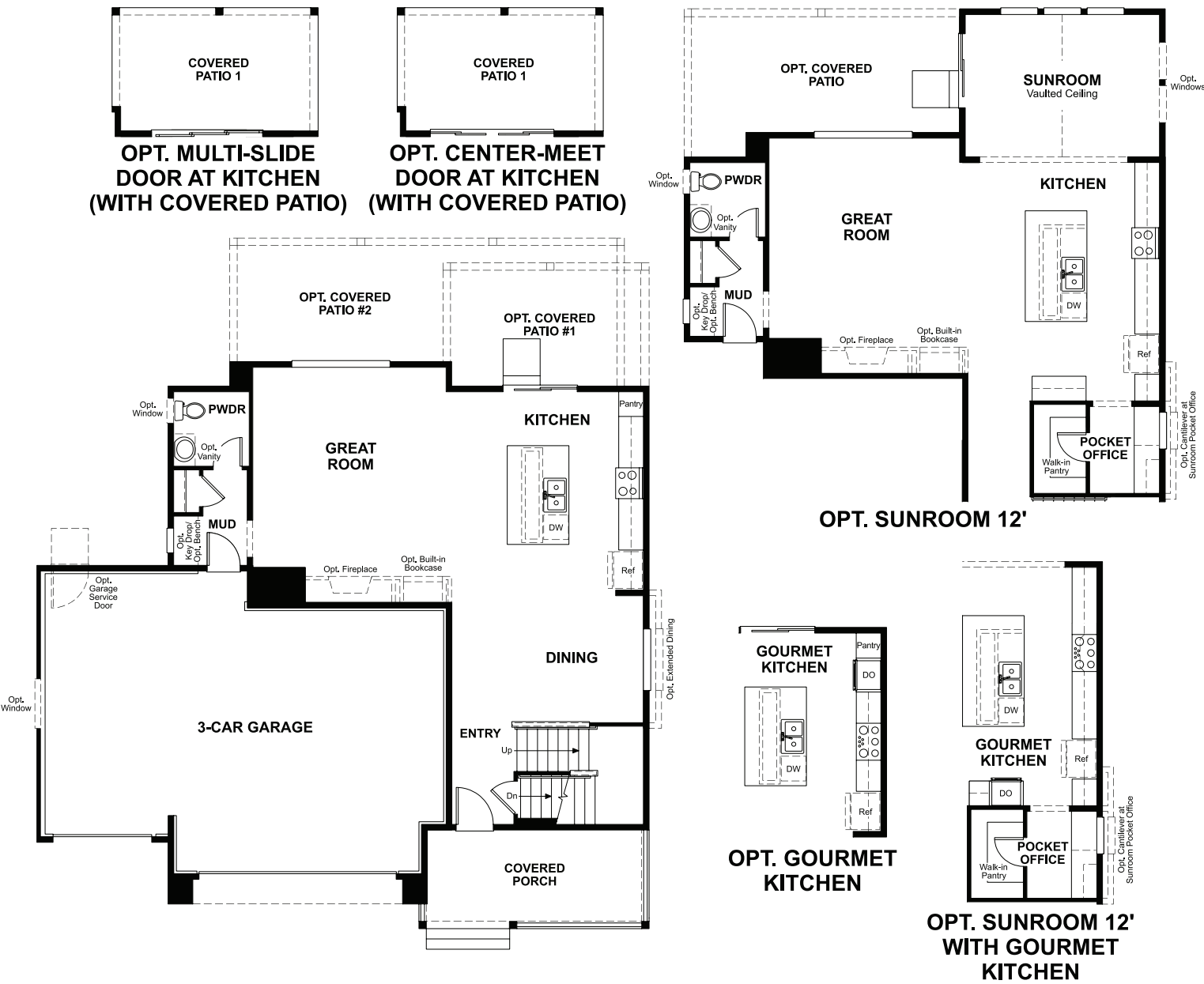


ELEVATION A



ELEVATION B

MAIN FLOOR



SECOND FLOOR

