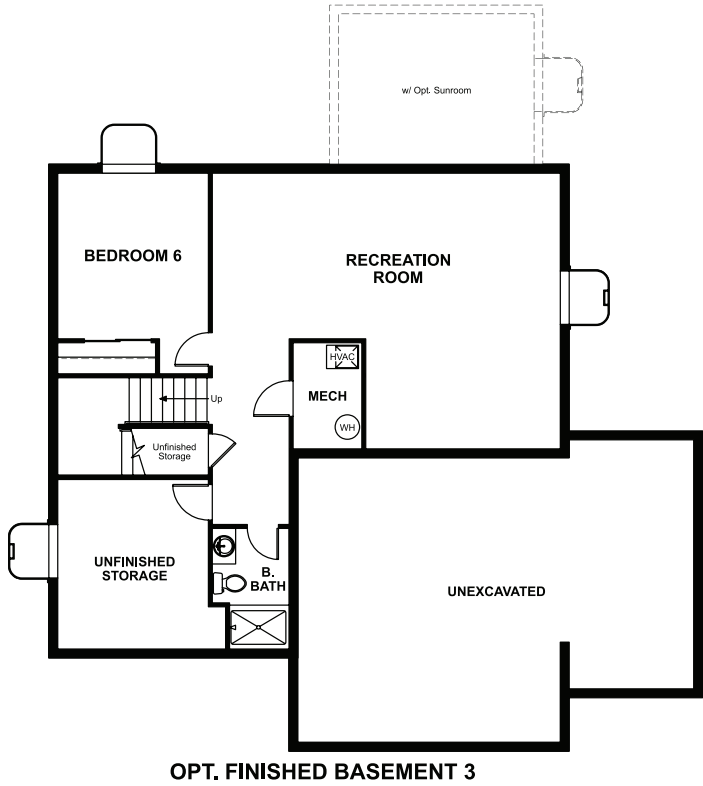


BASEMENT



ELEVATION C

ABOUT THE HEMINGWAY


The two-story Hemingway features an entryway with adjacent flex space that can be personalized to suit your needs. At the back of the home, you'll find a great room with optional corner fireplace, a large kitchen with center island and walk-in pantry. An upstairs laundry room, loft, four inviting bedrooms including an owner's suite with walk-in closet and private bath complete this home.

COMMUNITY LOCATION:

Kinston at Centerra | 6413 Union Creek Commons Drive | Loveland, CO 80538 | 303.850.5750

DESIGN CENTER LOCATION:

Denver Metro Home Gallery™ | 8000 E. Belview Avenue, Suite C-12 | Greenwood Village, CO 80111 | 888.402.4663

 Floor plans and renderings are conceptual drawings and may vary from actual plans and homes as built. Options and features may not be available on all homes and are subject to change without notice. Actual homes may vary from photos and/or drawings which show upgraded landscaping and may not represent the lowest-priced homes in the community. Features may include optional upgrades and may not be available on all homes. Prices, specifications and availability are subject to change without notice. Square footage is approximate and subject to change without notice. ©2022 Richmond American Homes, Richmond American Homes of Colorado, Inc. 01/21/2022



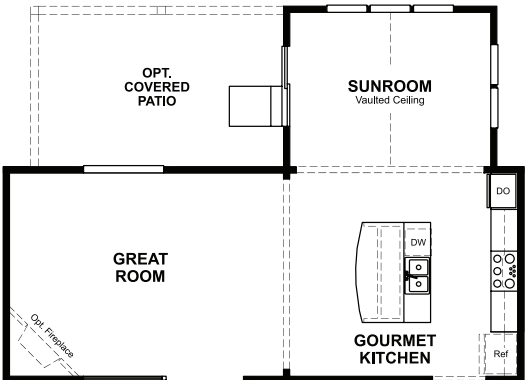
ELEVATION A



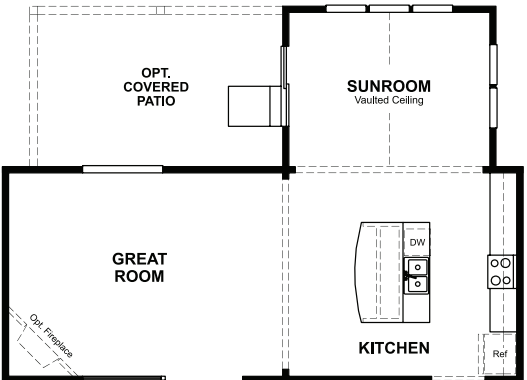
ELEVATION B

MAIN FLOOR

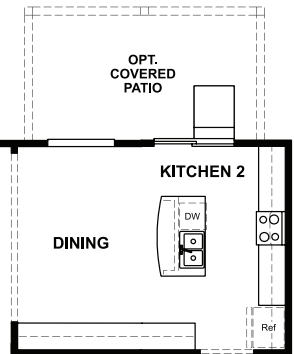
SECOND FLOOR



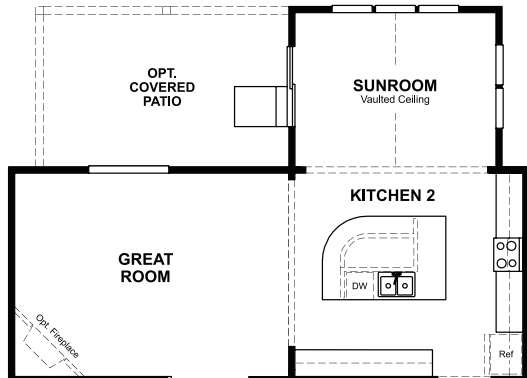
OPT. GOURMET KITCHEN AND SUNROOM
W/ ALTERNATE ISLAND



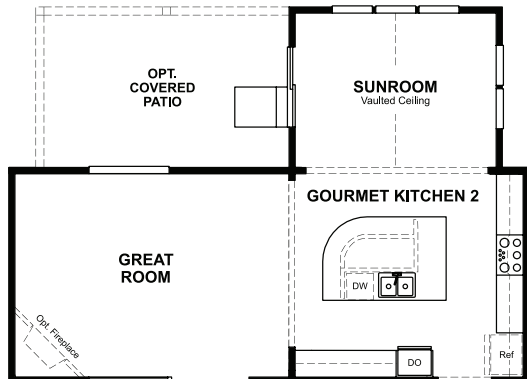
OPT. SUNROOM W/ ALTERNATE ISLAND



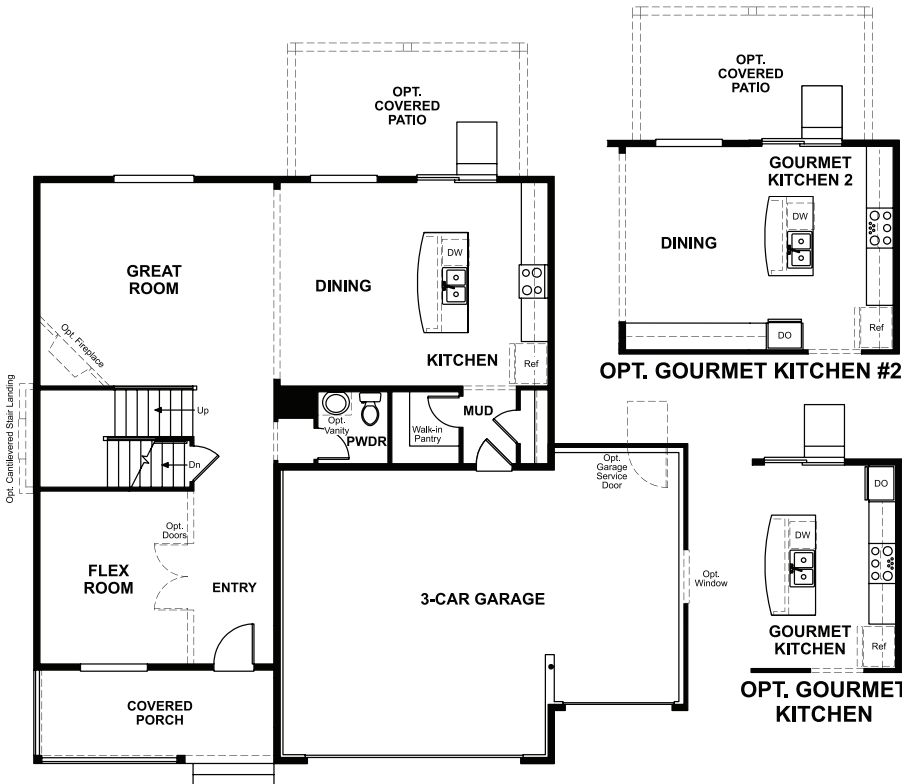
OPT. KITCHEN #2



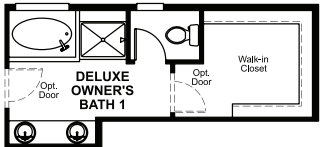
OPT. KITCHEN #2 W/ SUNROOM & ALTERNATE ISLAND



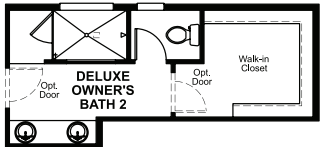
OPT. GOURMET KITCHEN #2 AND SUNROOM
W/ SUNROOM & ALTERNATE ISLAND



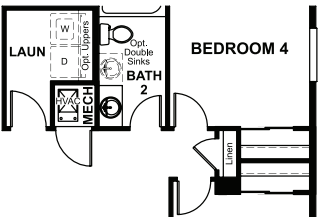
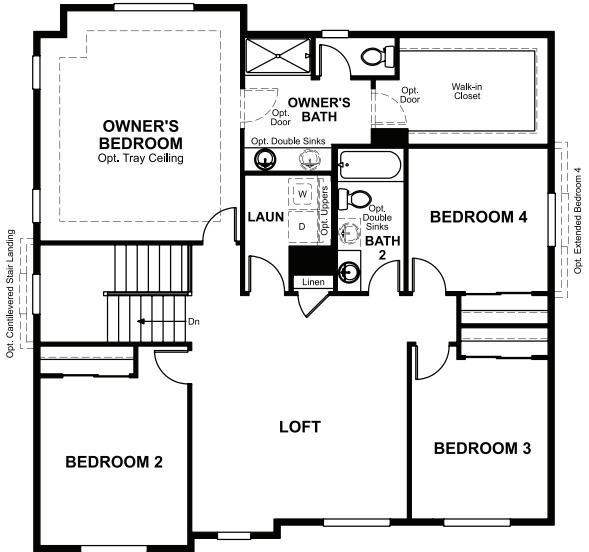
OPT. GOURMET KITCHEN



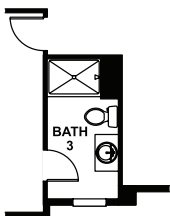
OPT. DELUXE OWNER'S BATH 1



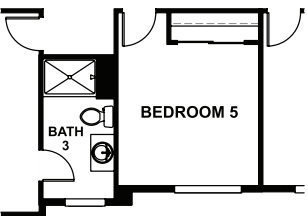
OPT. DELUXE OWNER'S BATH 2



W/ OPT. SUNROOM



OPT. BATH 3



OPT. BEDROOM 5/BATH 3