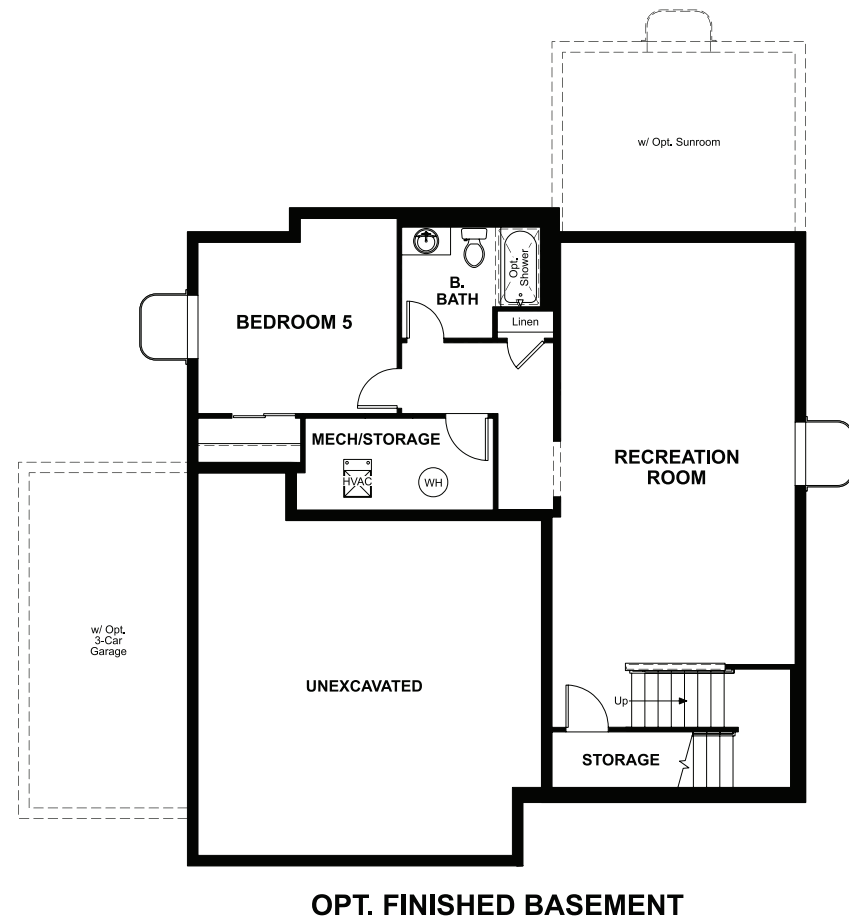


BASEMENT



OPT. FINISHED BASEMENT



ELEVATION E

ABOUT THE BEDFORD

The beautiful Bedford plan offers two stories of smartly designed living space. On the main floor, you'll find a spacious dining room, great room and kitchen with a center island, as well as a convenient mudroom and powder room off the 2-car garage. Upstairs, there's a versatile loft, centrally located laundry room, hall bath and three inviting bedrooms—including the owner's bedroom with walk-in closet and private bath. Options include a gourmet kitchen, finished basement, deluxe owner's bath, bedroom in lieu of the loft, sunroom and covered patio.

COMMUNITY LOCATION:

Settlers Crossing | 18856 East 97<sup>th</sup> Avenue | Commerce City, CO 80022 | 303.850.5750

DESIGN CENTER LOCATION:

Denver Metro Home Gallery™ | 8000 E. Belleview Avenue, Suite C-12 | Greenwood Village, CO 80111 | 888.402.4663



ELEVATION A




ELEVATION B



ELEVATION C



ELEVATION D

 Floor plans and renderings are conceptual drawings and may vary from actual plans and homes as built. Options and features may not be available on all homes and are subject to change without notice. Actual homes may vary from photos and/or drawings which show upgraded landscaping and may not represent the lowest-priced homes in the community. Features may include optional upgrades and may not be available on all homes. Prices, specifications and availability are subject to change without notice. Square footage is approximate and subject to change without notice. ©2021 Richmond American Homes, Richmond American Homes of Colorado, Inc. 8/13/2021

MAIN FLOOR

SECOND FLOOR

