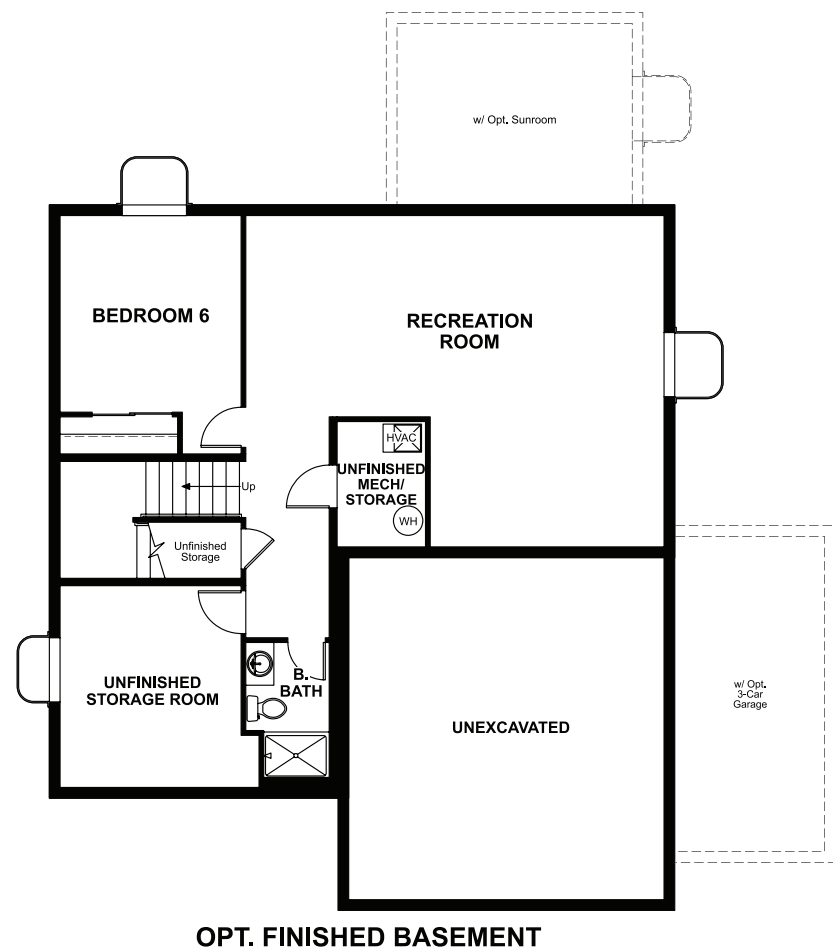


BASEMENT



ELEVATION D

ABOUT THE HEMINGWAY

The Hemingway features an entryway with adjacent flex space that can be personalized to suit your needs. At the back of the home, you'll find a great room with an optional corner fireplace, a large kitchen with island and an optional sunroom. An upstairs laundry room, loft and owner's suite complete this home.

COMMUNITY LOCATION:

Settlers Crossing | 18856 East 97th Avenue | Commerce City, CO 80022 | 303.850.5750

DESIGN CENTER LOCATION:

Denver Metro Home Gallery™ | 8000 E. Belleview Avenue, Suite C-12 | Greenwood Village, CO 80111 | 888.402.4663



ELEVATION A



ELEVATION B



ELEVATION C

Floor plans and renderings are conceptual drawings and may vary from actual plans and homes as built. Options and features may not be available on all homes and are subject to change without notice. Actual homes may vary from photos and/or drawings which show upgraded landscaping and may not represent the lowest-priced homes in the community. Features may include optional upgrades and may not be available on all homes. Prices, specifications and availability are subject to change without notice. Square footage is approximate and subject to change without notice. ©2021 Richmond American Homes, Richmond American Homes of Colorado, Inc. 8/13/2021



MAIN FLOOR

SECOND FLOOR

