

# THE LARIMAR

Approx. 1,770 sq. ft. | 4 bed | 2 to 3 bath | 2-car garage | Plan #X917



ELEVATION C

## ABOUT THE LARIMAR

The Larimar plan offers a seamless blend of style, comfort and functionality. The heart of this home is its open, airy kitchen, which features a center island, walk-in pantry and dining room, and flows into an inviting great room with center meet doors to an adjacent covered patio. The large owner's suite boasts a well-appointed bath with optional double sinks and an oversized walk-in closet, and three additional bedrooms provide ample space for rest and relaxation. Personalization options include a private study, third bathroom and more!

### COMMUNITY LOCATION:

Seasons at Carillon | 20404 Stelfox Street | Manor, TX 78653 | **512.515.8102**

### DESIGN CENTER LOCATION:

Austin Home Gallery<sup>™</sup> | 2519 Scarbrough Drive, Suite 200 | Austin, TX 78728



Floor plans and renderings are conceptual drawings and may vary from actual plans and homes as built. Options and features may not be available on all homes and are subject to change without notice. Actual homes may vary from photos and/or drawings which show upgraded landscaping and may not represent the lowest-priced homes in the community. Features may include optional upgrades and may not be available on all homes. Prices, specifications and availability are subject to change without notice. Square footage is approximate and subject to change without notice. ©2022 Richmond American Homes, Richmond American Homes of Texas, Inc. (a public report is available on the state real estate department's website), Richmond American Construction, Inc. ROC #206612. 01/28/2022

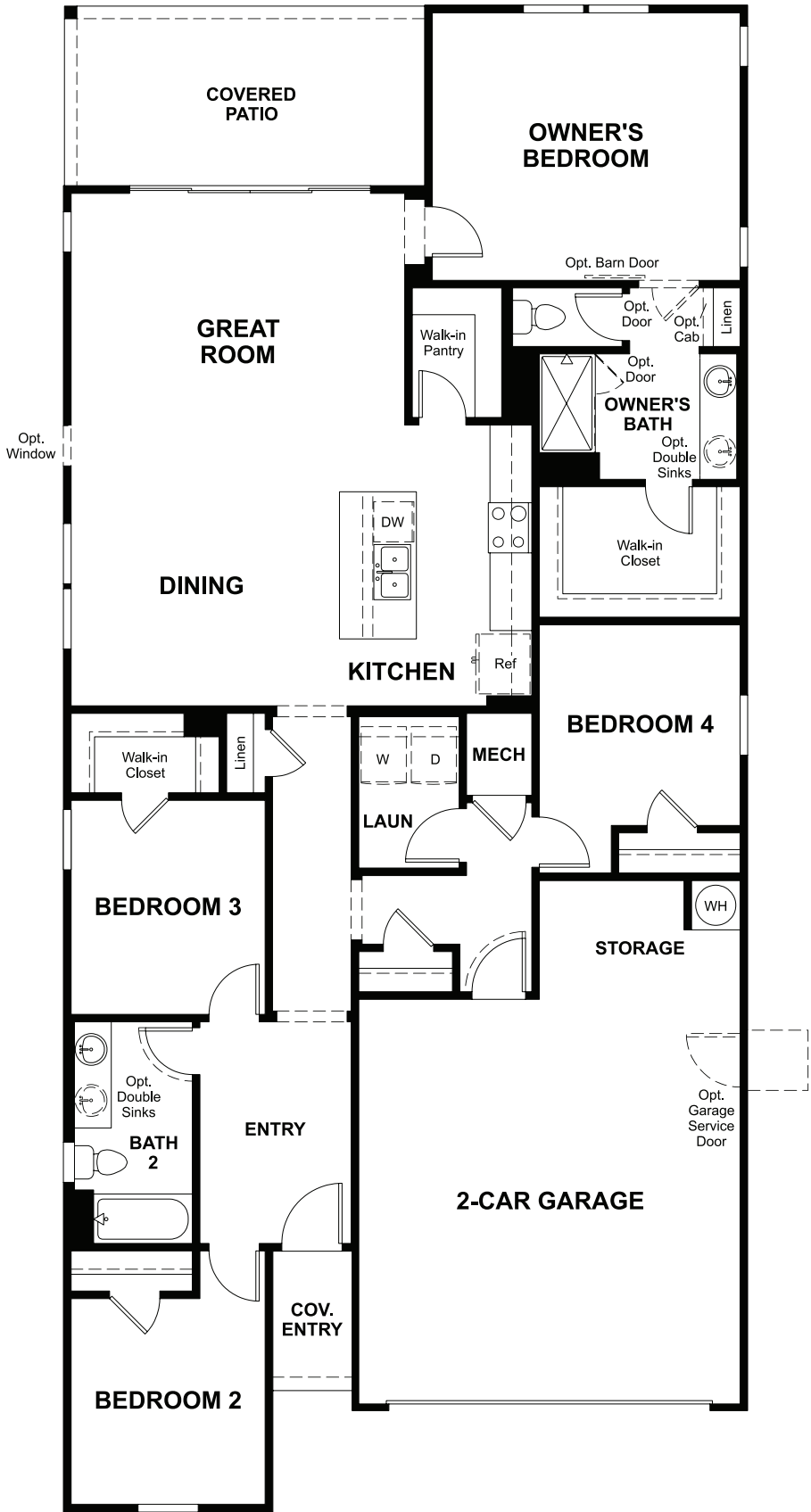


ELEVATION A

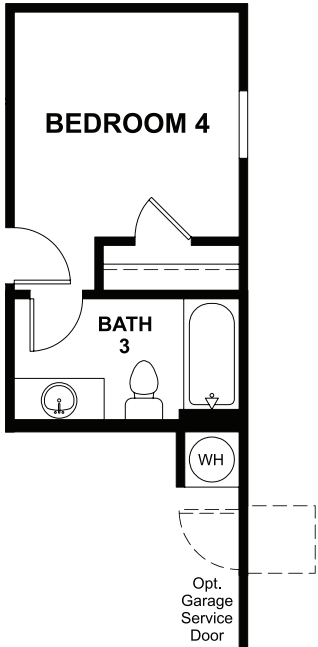
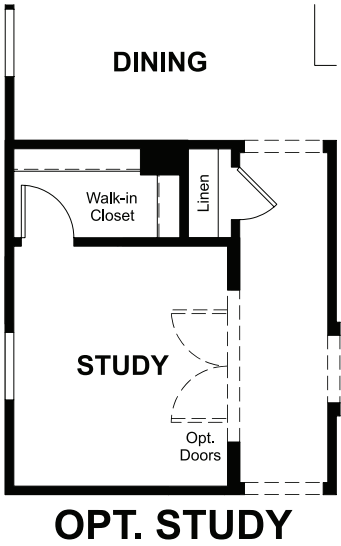


ELEVATION B

MAIN FLOOR



MAIN-FLOOR OPTIONS



OPT. BATH 3 AT  
BEDROOM 4