



ELEVATION C

ABOUT THE AGATE

The thoughtfully designed Agate floor plan offers an open layout showcasing a kitchen with a center island, a great room and a dining area. An adjacent primary suite includes a walk-in closet and private bath, and two additional bedrooms provide ample space for rest and relaxation. You'll also appreciate a second bathroom and a flex room that can be optioned as an additional bedroom and bath. Personalize this versatile ranch plan with a covered patio!

COMMUNITY LOCATION:

Seasons at Starview | 43896 Hampton Street | Lancaster, CA 93536 | **661.300.7101**

DESIGN CENTER LOCATION:

Southern California Home Gallery™ | 5171 California Avenue, Suite 110 | Irvine, CA 92617 | **909.579.3300**

Floor plans and renderings are conceptual drawings and may vary from actual plans and homes as built. Options and features may not be available on all homes and are subject to change without notice. Actual homes may vary from photos and/or drawings which show upgraded landscaping and may not represent the lowest-priced homes in the community. Features may include optional upgrades and may not be available on all homes. Prices, specifications and availability are subject to change without notice. Square footage is approximate and subject to change without notice. ©2023 Richmond American Homes, Richmond American Homes of Maryland, Inc., California Department of Real Estate – Real Estate Broker, Corporation License Number 01842595. 05/26/2023

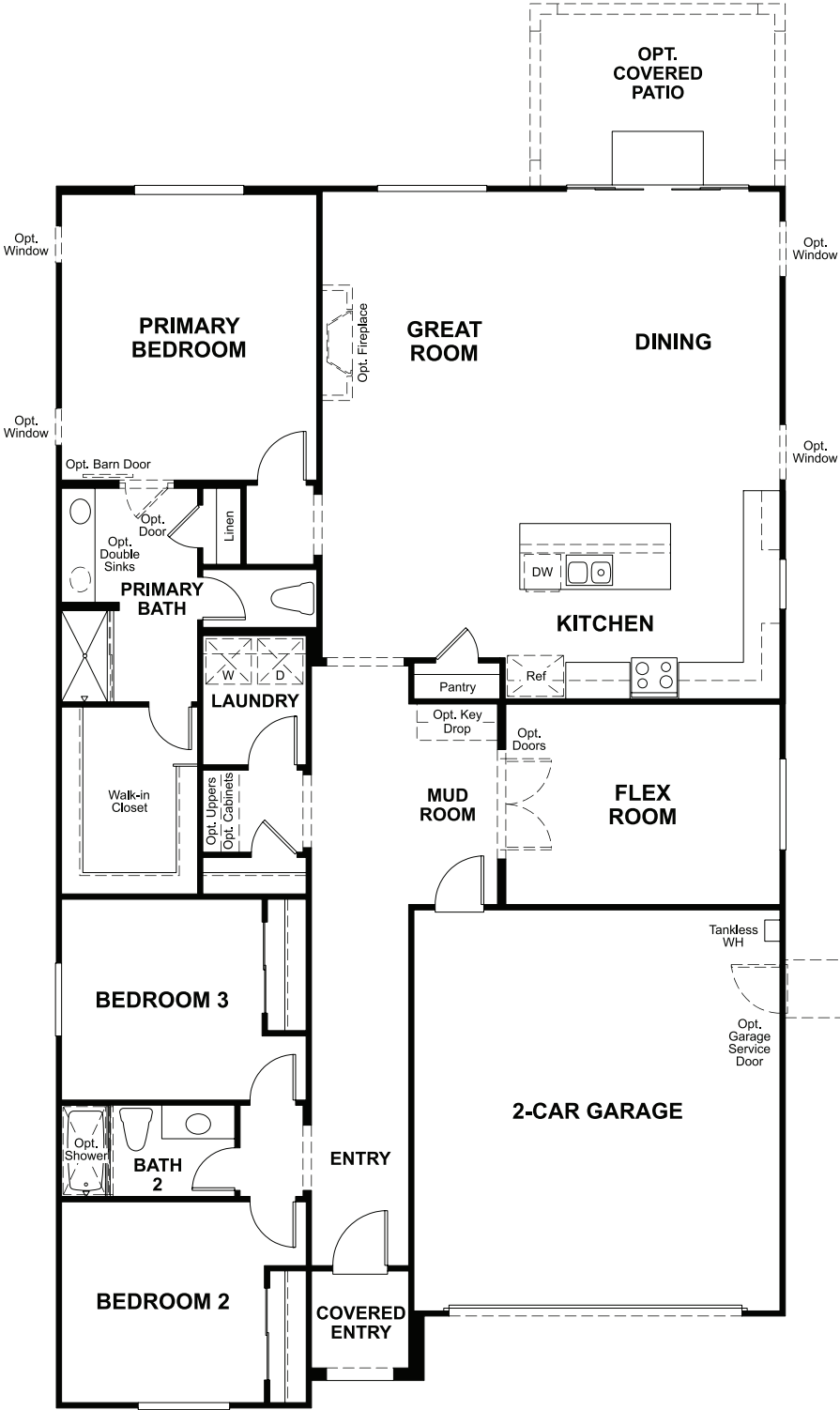


ELEVATION A

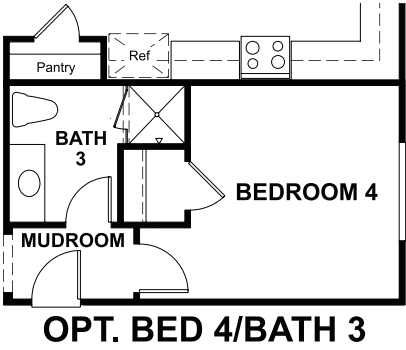


ELEVATION B

MAIN FLOOR



MAIN-FLOOR OPTIONS



THIS PLAN’S PROJECTED  
**HERS® INDEX = 17\***  
Projected rating based on plans – field confirmation required

**How does this floor plan rate?**  
Take a look: **100** = standard new home™ **130** = typical resale home™  
The lower the number, the better! Refer to the RESNET® HERS index brochure  
or go to **RESNET.us** and **HERSindex.com**

**What’s a HERS® index?** HERS stands for Home Energy Rating System, a system created by RESNET® to measure home energy efficiency.^  
A projected HERS index or rating is a computer simulation performed prior to construction by a third-party HERS rater using RESNET-accredited rating software, rated feature and specification data derived from home plans, features and specifications, and other data selected or assumed by the rater. The projected HERS index is approximate and is subject to change without notice. Actual results will vary.