



SEASONS AT CARILLON  
**THE AZURE**  
Approx. 1,560 sq. ft. | 2 to 3 bed | 2 bath | 2-car garage | Plan #X910




ELEVATION C

ABOUT THE AZURE

Part of the inspired Seasons Collection, the one-story Azure plan boasts ample space for entertaining, including a great room, a well-appointed kitchen with a walk-in pantry, center island and adjacent dining room, and a relaxing covered patio. A lavish owner's suite with an attached bath and oversized walk-in closet is separated from the second and third bedrooms.

**COMMUNITY LOCATION:**  
Seasons at Carillon | 20404 Stelfox Street | Manor, TX 78653 | **512.515.8102**

**DESIGN CENTER LOCATION:**  
Austin Home Gallery™ | 2519 Scarbrough Drive, Suite 200 | Austin, TX 78728



Floor plans and renderings are conceptual drawings and may vary from actual plans and homes as built. Options and features may not be available on all homes and are subject to change without notice. Actual homes may vary from photos and/or drawings which show upgraded landscaping and may not represent the lowest-priced homes in the community. Features may include optional upgrades and may not be available on all homes. Prices, specifications and availability are subject to change without notice. Square footage is approximate and subject to change without notice. ©2022 Richmond American Homes, Richmond American Homes of Texas, Inc. (a public report is available on the state real estate department's website), Richmond American Construction, Inc. ROC #206612. 03/02/2022



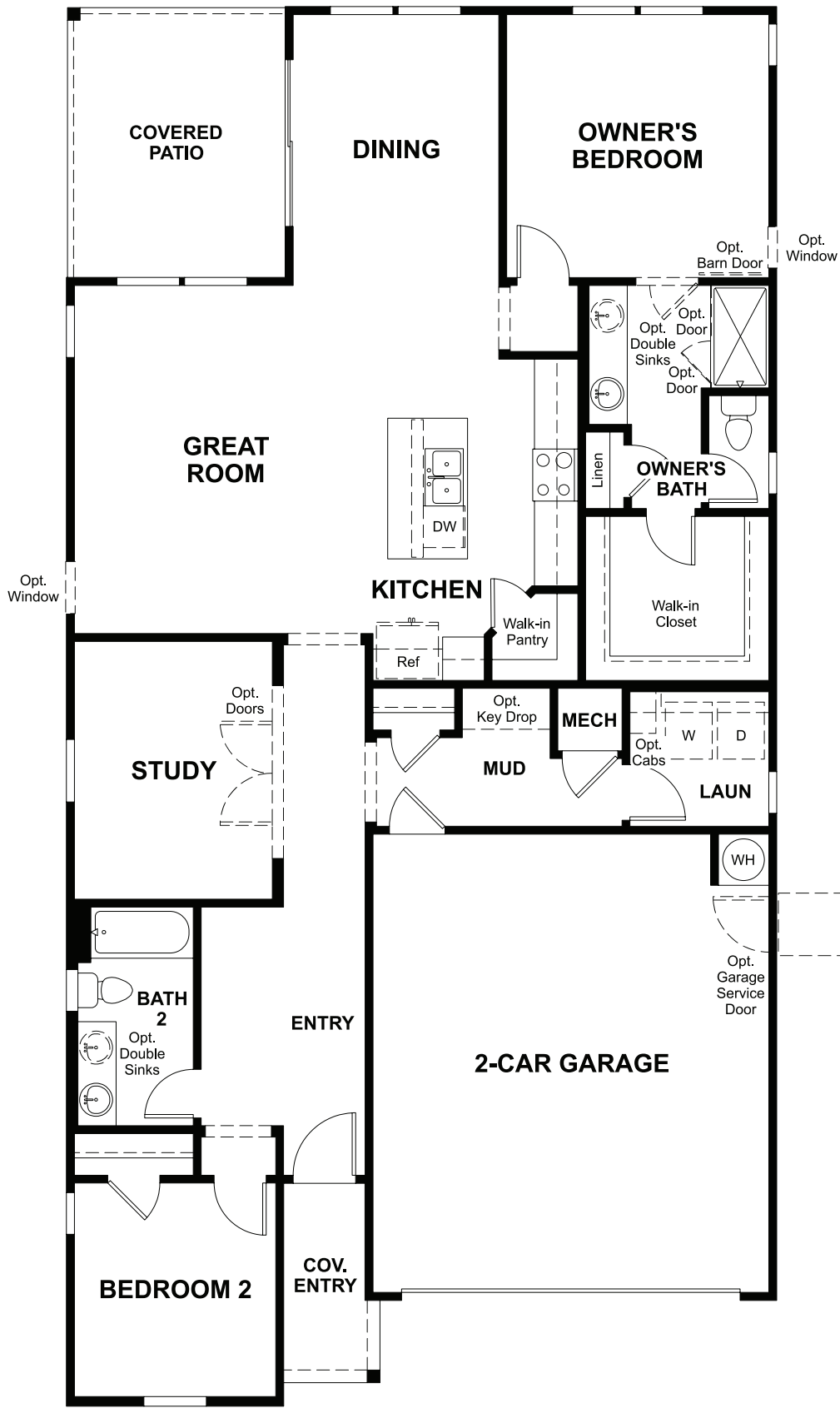
ELEVATION A



ELEVATION B



MAIN FLOOR



MAIN-FLOOR OPTIONS

