



SEASONS AT CARILLON

THE SAPPHIRE

Approx. 2,000 sq. ft. | 5 bed | 2 to 3 bath | 2-car garage | Plan #X920



ELEVATION C

ABOUT THE SAPPHIRE

An open layout showcasing a spacious great room, dining area and large kitchen makes up the heart of the inviting Sapphire home design. Dual walk-in closets accent the indulgent owner's bedroom, complete with an attached bath. Two of the five bedrooms can be optioned as a teen room or a study, to make the space truly your own.

COMMUNITY LOCATION:

Seasons at Carillon | 20404 Stelfox Street | Manor, TX 78653 | **512.515.8102**

DESIGN CENTER LOCATION:

Austin Home Gallery™ | 2519 Scarbrough Drive, Suite 200 | Austin, TX 78728



Floor plans and renderings are conceptual drawings and may vary from actual plans and homes as built. Options and features may not be available on all homes and are subject to change without notice. Actual homes may vary from photos and/or drawings which show upgraded landscaping and may not represent the lowest-priced homes in the community. Features may include optional upgrades and may not be available on all homes. Prices, specifications and availability are subject to change without notice. Square footage is approximate and subject to change without notice. ©2022 Richmond American Homes, Richmond American Homes of Texas, Inc. (a public report is available on the state real estate department's website), Richmond American Construction, Inc. ROC #206612. 03/02/2022

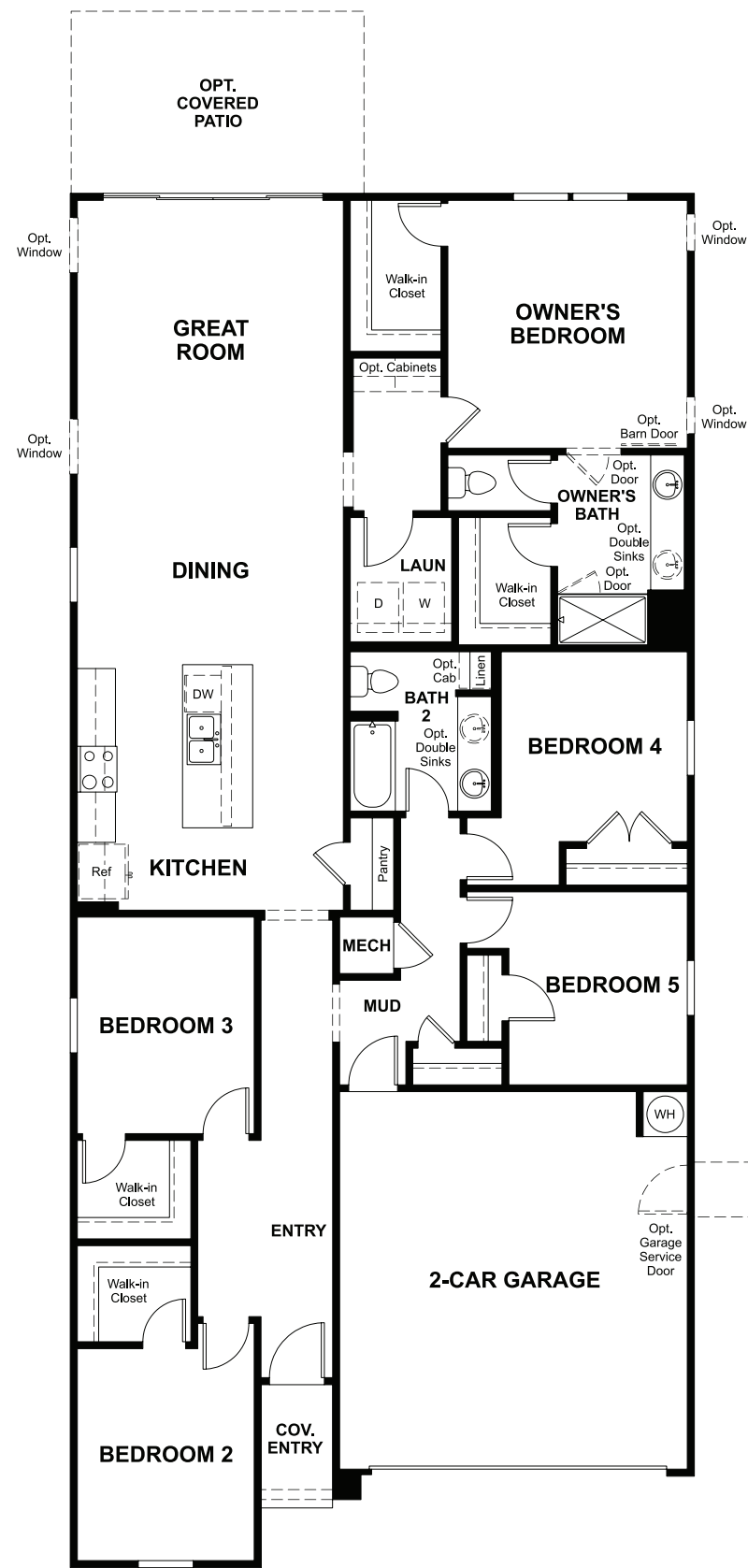


ELEVATION A



ELEVATION B

MAIN FLOOR



MAIN-FLOOR OPTIONS

