

SEASONS AT SUMMERFIELD
THE TOURMALINE

Approx. 2,650 sq. ft. | 3 to 5 bed | 2.5 to 3 bath | 2-car garage | Plan #S923



ELEVATION D

ABOUT THE TOURMALINE

The two-story Tourmaline floor plan offers abundant opportunities for personalization. The main floor showcases an open layout with a great room, a dining area and a kitchen with a center island. You'll also find a powder room and a versatile flex room that can be optioned as a fifth bedroom. Upstairs, the owner's suite features an immense walk-in closet and a private bath. Two additional bedrooms, a bath, a laundry and a loft that can be optioned as a fourth bedroom complete the second floor. Personalize this plan with a covered patio!

COMMUNITY LOCATION:

Seasons at Summerfield | 11774 Olivine Road | Victorville, CA 92392 | **760.999.6200**

DESIGN CENTER LOCATION:

Southern California Home Gallery[™] | 5171 California Avenue, Suite 110 | Irvine, CA 92617 | **909.579.3288**

*This information is presented for educational purposes only. The HERS® index for a confirmed rating will be determined by a third-party HERS rater based on data gathered from on-site observations and, if required, testing of rated features for a home as featured, optioned, located, oriented and/or built.

**Standard new home is based on the RESNET® Reference Home definition with a HERS index of 100 (based on the 2006 International Energy Conservation Code).

***Typical resale home is based on the U.S. Department of Energy definition with a HERS index of 130.

^RESNET has developed the HERS index to indicate the comparative efficiencies of homes. It is no guarantee that energy efficiencies will be achieved.

Floor plans and renderings are conceptual drawings and may vary from actual plans and homes as built. Options and features may not be available on all homes and are subject to change without notice. Actual homes may vary from photos and/or drawings which show upgraded landscaping and may not represent the lowest-priced homes in the community. Features may include optional upgrades and may not be available on all homes. Prices, specifications and availability are subject to change without notice. Square footage is approximate and subject to change without notice. ©2022 Richmond American Homes, Richmond American Homes of Maryland, Inc., California Department of Real Estate – Real Estate Broker, Corporation License Number 01842595. 03/23/2022



ELEVATION A

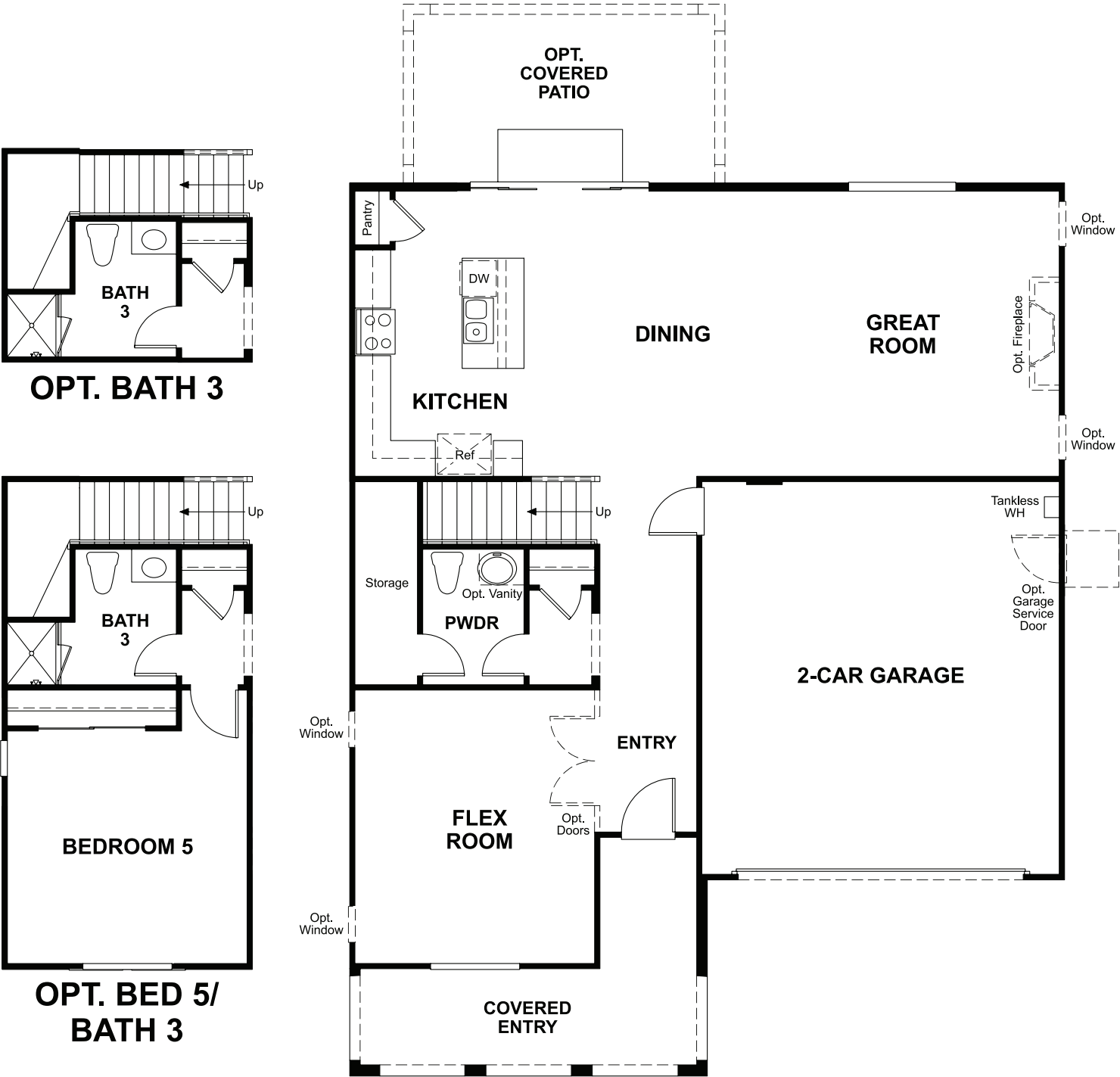


ELEVATION B

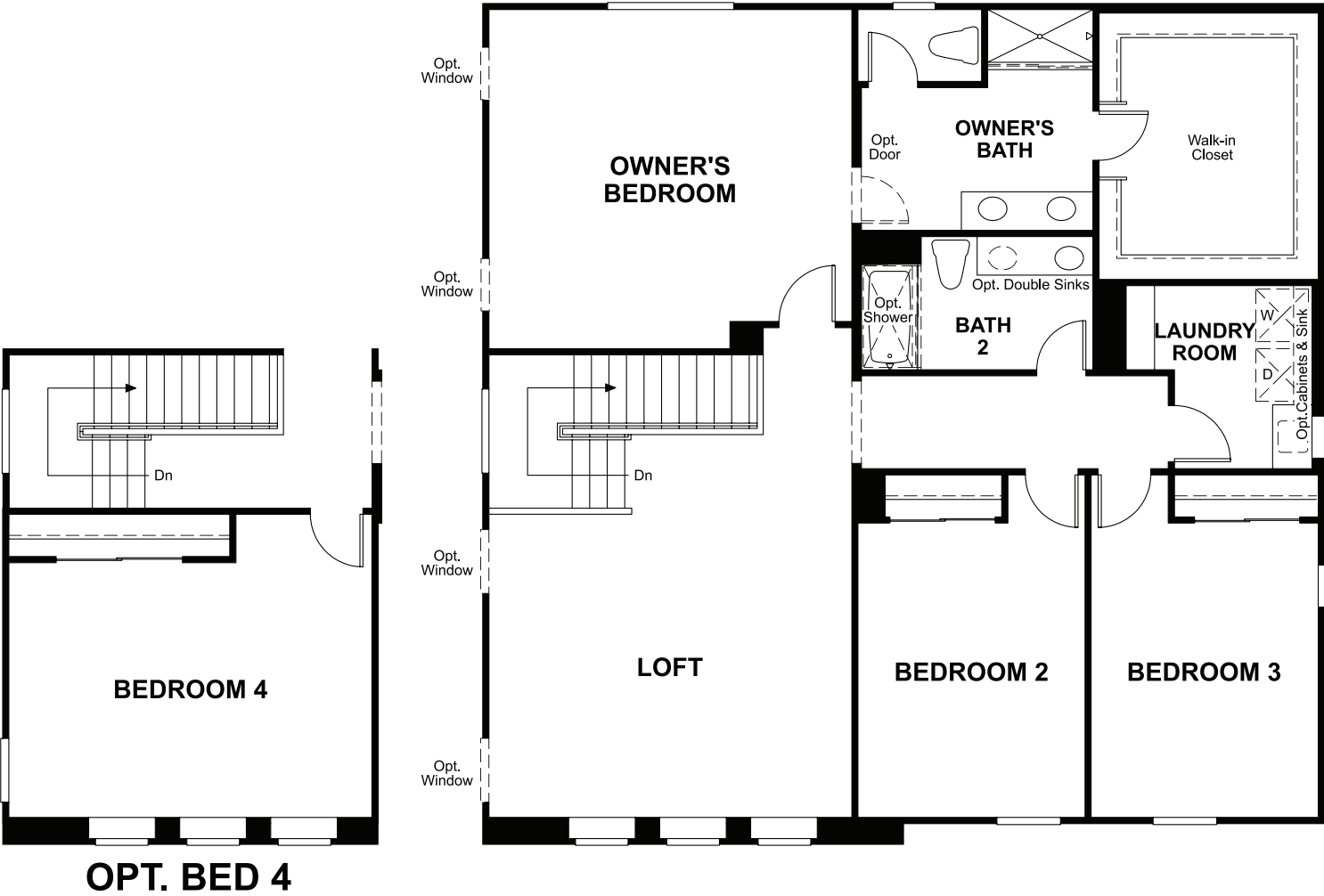


ELEVATION C

MAIN FLOOR
PRELIMINARY



SECOND FLOOR
PRELIMINARY



THIS PLAN'S PROJECTED
HERS® INDEX = 20*
Projected rating based on plans – field confirmation required

How does this floor plan rate?
Take a look: **100** = standard new home™ **130** = typical resale home™
The lower the number, the better! Refer to the RESNET® HERS index brochure
or go to **RESNET.us** and **HERSindex.com**

What's a HERS® index? HERS stands for Home Energy Rating System, a system created by RESNET® to measure home energy efficiency.^
A projected HERS index or rating is a computer simulation performed prior to construction by a third-party HERS rater using RESNET-accredited rating software, rated feature and specification data derived from home plans, features and specifications, and other data selected or assumed by the rater. The projected HERS index is approximate and is subject to change without notice. Actual results will vary.