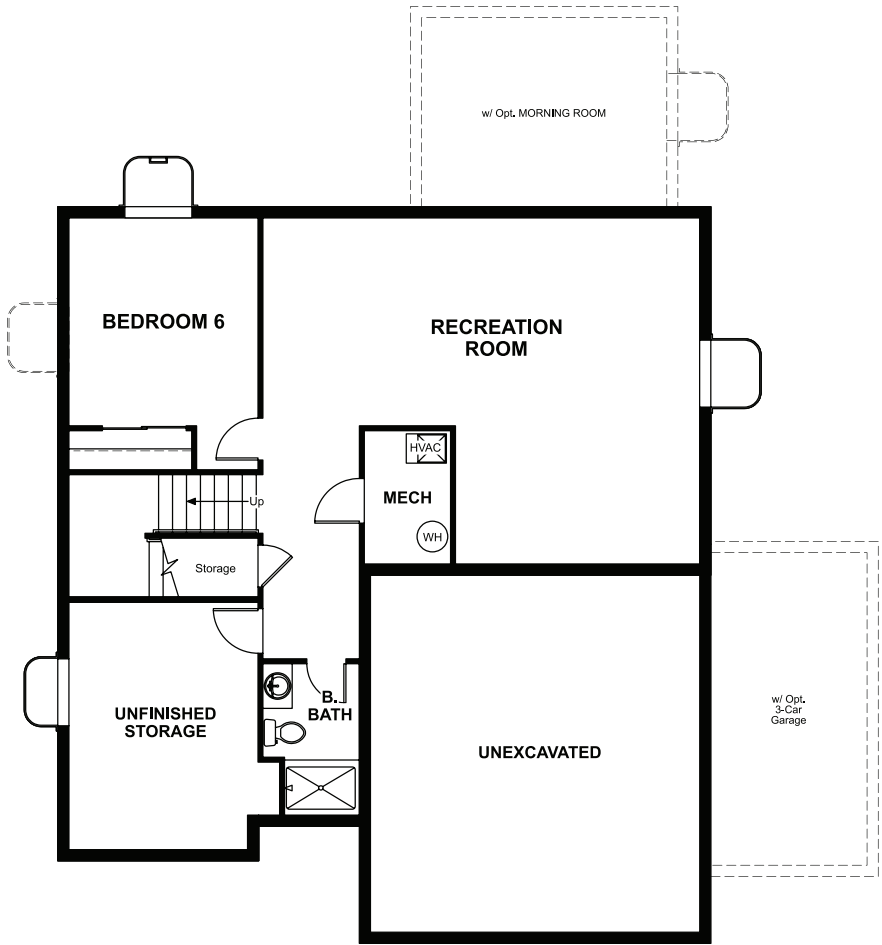


BASEMENT



OPT. FINISHED BASEMENT



ELEVATION E

ABOUT THE HEMINGWAY


The main floor of the beautiful Hemingway plan features versatile flex space, a great room with optional fireplace, an inviting kitchen with a central island and an optional covered patio. Upstairs, you'll find a convenient laundry, a spacious loft and a lavish primary suite with a private bath and a roomy walk-in closet. An optional sunroom and finished basement are available.

COMMUNITY LOCATION:

Paint Brush Hills | 10386 Country Manor Drive | Peyton, CO 80831 | 303.850.5750

DESIGN CENTER LOCATION:

Denver Metro Home Gallery™ | 8000 E. Belview Avenue, Suite C-12 | Greenwood Village, CO 80111 | 888.402.4663

 Floor plans and renderings are conceptual drawings and may vary from actual plans and homes as built. Options and features may not be available on all homes and are subject to change without notice. Actual homes may vary from photos and/or drawings which show upgraded landscaping and may not represent the lowest-priced homes in the community. Features may include optional upgrades and may not be available on all homes. Prices, specifications and availability are subject to change without notice. Square footage is approximate and subject to change without notice. ©2023 Richmond American Homes, Richmond American Homes of Colorado, Inc. 7/20/2023



ELEVATION A



ELEVATION B



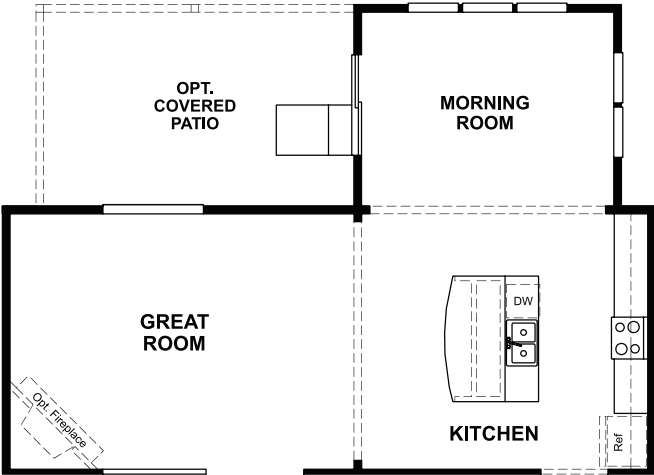
ELEVATION C



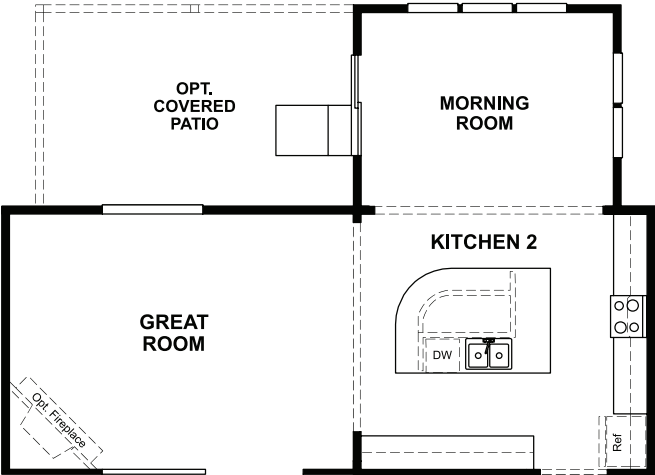
ELEVATION D

MAIN FLOOR

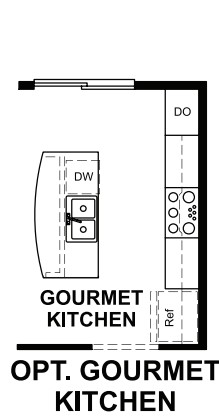
SECOND FLOOR



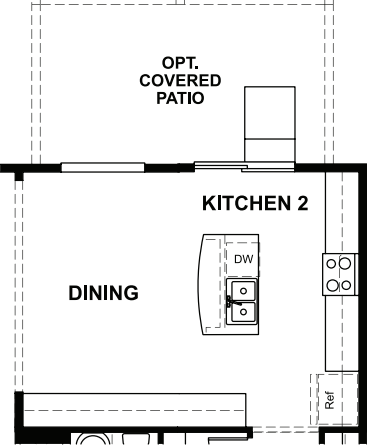
OPT. MORNING ROOM W/ ALTERNATE ISLAND



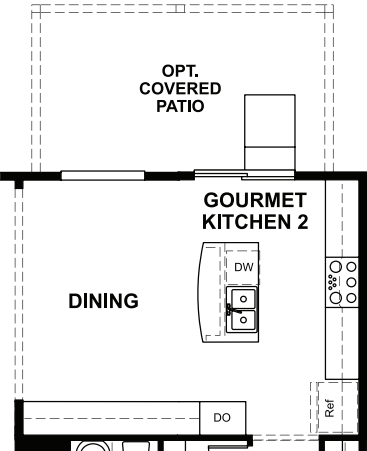
OPT. KITCHEN 2 W/ MORNING ROOM & ALTERNATE ISLAND



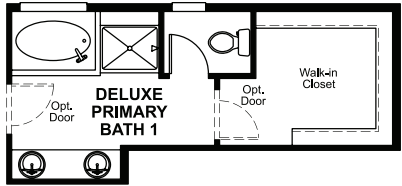
OPT. GOURMET KITCHEN



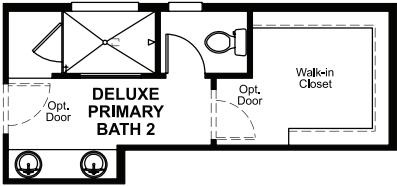
OPT. KITCHEN 2



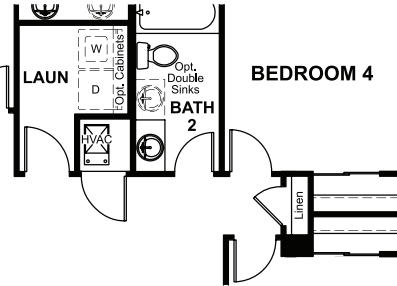
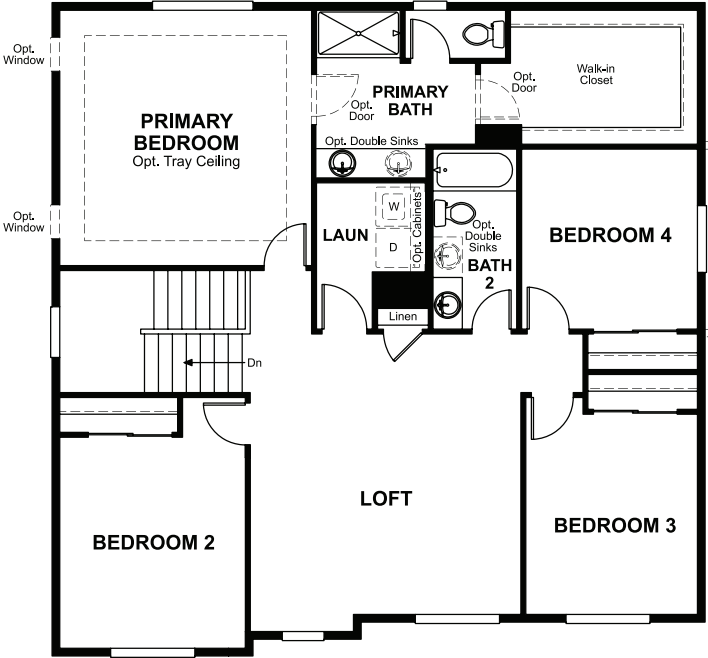
OPT. GOURMET KITCHEN 2



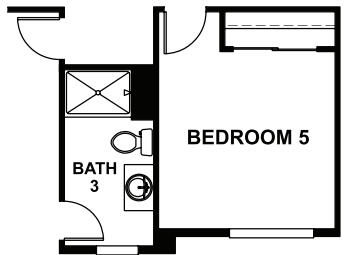
OPT. DELUXE PRIMARY BATH 1



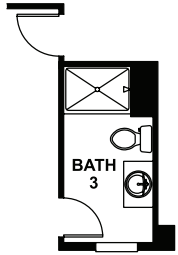
OPT. DELUXE PRIMARY BATH 2



W/ OPT. MORNING ROOM



OPT. BEDROOM 5/BATH 3



OPT. BATH 3