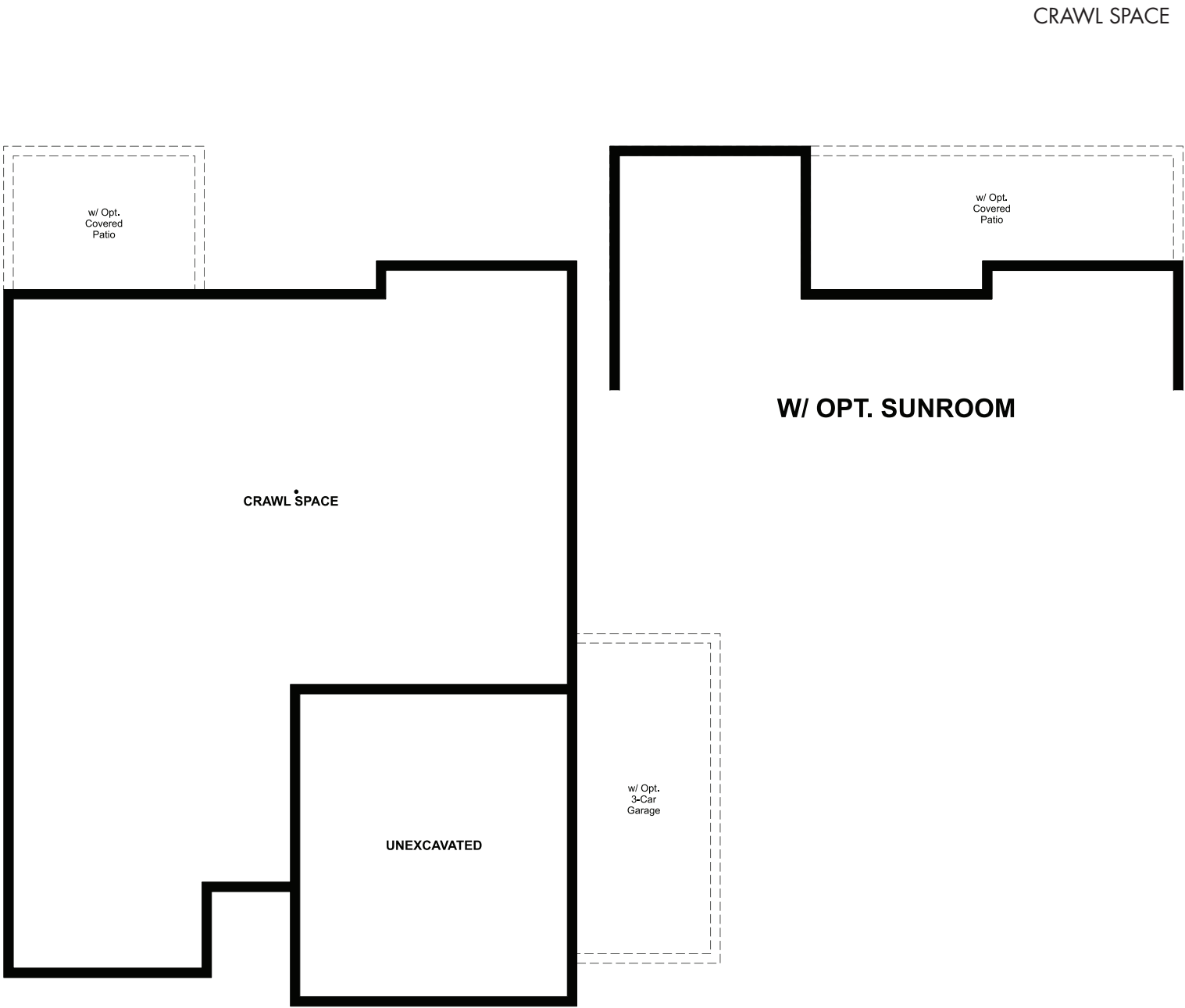


THE NOBLE

Approx. 1,520 sq. ft. | 3 bed | 2 bath | 2- to 3-car garage | Plan #D949



ELEVATION E

ABOUT THE NOBLE


Through the covered entry of the charming ranch-style Noble plan, you'll find two bedrooms and a shared hall bath. Make your way to the back of the home, where an open great room, kitchen and dining room provide an inviting space for relaxing and entertaining. Completing the thoughtfully designed layout are a convenient central laundry and a lavish owner's suite, which includes a private bath with an optional barn door and double sinks and a generous walk-in closet. Additional ways to personalize this plan include a great room fireplace, sunroom, and covered patio.

COMMUNITY LOCATION:

Seasons at Creekside Village | 6947 E. 126th Place | Thornton, CO 80602 | **303.850.5750**

DESIGN CENTER LOCATION:

HG2 by Richmond American[™] | 8000 E. Belview Avenue, Suite D-30 | Greenwood Village, CO 80111 | **888.402.4663**

 Floor plans and renderings are conceptual drawings and may vary from actual plans and homes as built. Options and features may not be available on all homes and are subject to change without notice. Actual homes may vary from photos and/or drawings which show upgraded landscaping and may not represent the lowest-priced homes in the community. Features may include optional upgrades and may not be available on all homes. Prices, specifications and availability are subject to change without notice. Square footage is approximate and subject to change without notice. ©2022 Richmond American Homes, Richmond American Homes of Colorado, Inc. 6/13/2022



ELEVATION A



ELEVATION B

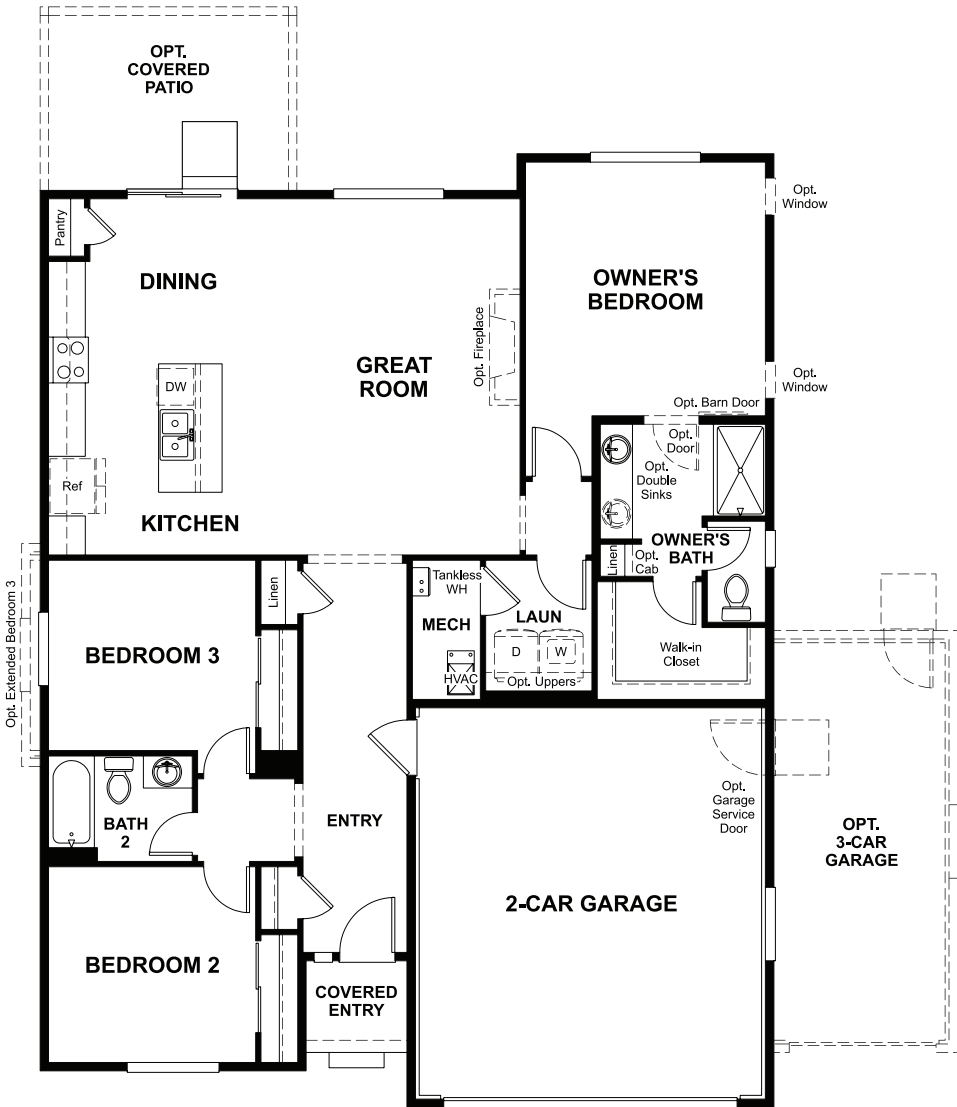


ELEVATION C



ELEVATION D

MAIN FLOOR



MAIN-FLOOR OPTIONS

