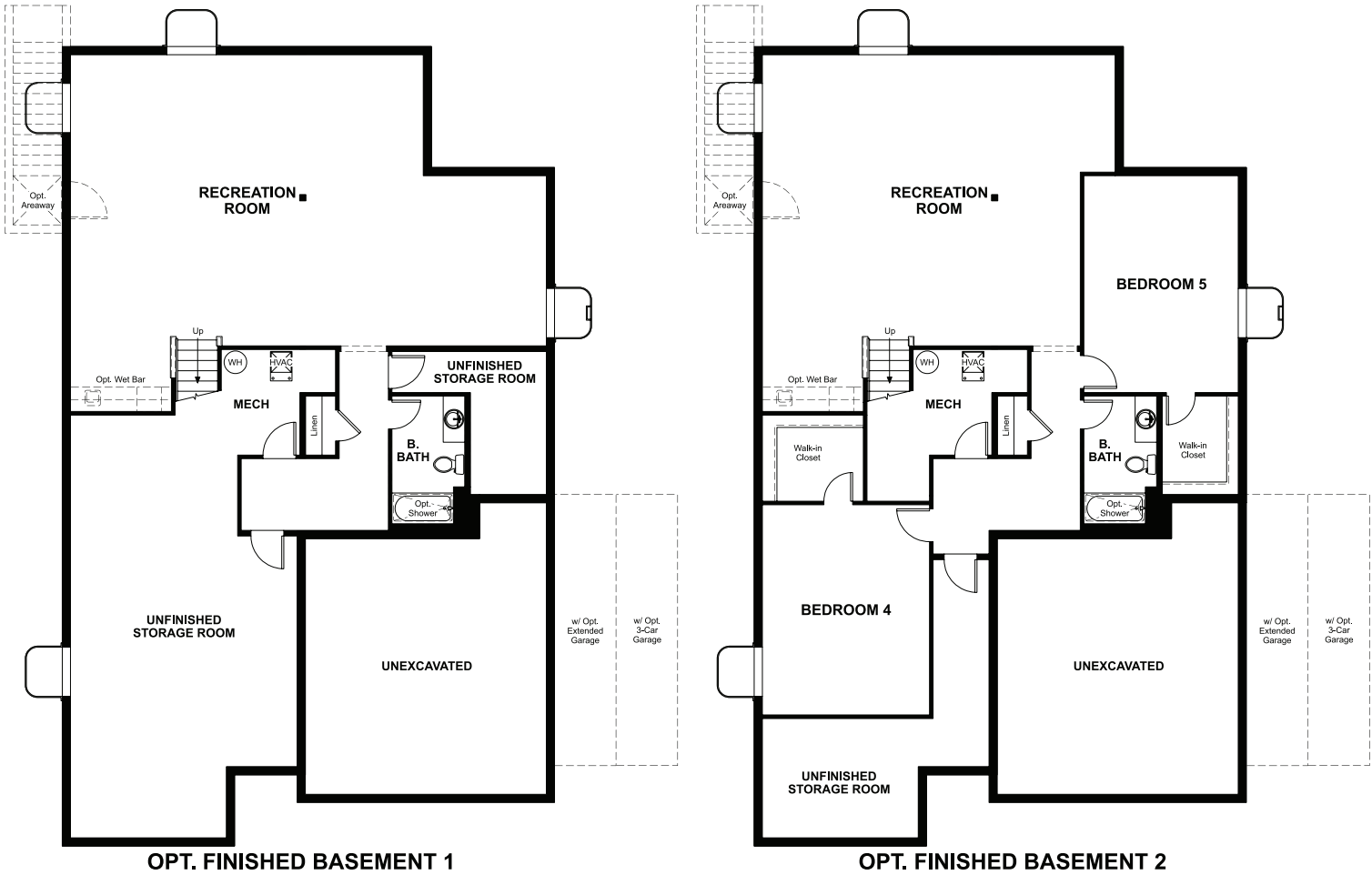


THE AVALON

Approx. 3,730 sq. ft. • 1,930 finished sq. ft. • 1,800 unfinished sq. ft.  
2 to 5 bed | 2 to 3 bath | 2- to 3-car garage | Plan #U195

BASEMENT



COMMUNITY LOCATION:

Roam at Mountain Green | 5903 N. Angels Landing Drive | Mountain Green, UT 84050 | 801.545.3429

DESIGN CENTER LOCATION:

Utah Home Gallery™ | 849 W. LeVoy Drive, Suite 108 | Salt Lake City, UT 84123 | 801.545.5167

\*This information is presented for educational purposes only. The HERS® index for a confirmed rating will be determined by a third-party HERS rater based on data gathered from on-site observations and, if required, testing of rated features for a home as featured, optioned, located, oriented and/or built.

\*\*Standard new home is based on the RESNET® Reference Home definition with a HERS index of 100 (based on the 2006 International Energy Conservation Code).

\*\*\*Typical resale home is based on the U.S. Department of Energy definition with a HERS index of 130.

^RESNET has developed the HERS index to indicate the comparative efficiencies of homes. It is no guarantee that energy efficiencies will be achieved.

Floor plans and renderings are conceptual drawings and may vary from actual plans and homes as built. Actual homes may vary from photos and/or drawings, which show upgraded landscaping and may not represent the lowest-priced homes in the community. Options and features may not be available on all homes and are subject to change without notice. Square footage and plan dimensions are approximate and may show approximate total available footage with finished and unfinished footages listed separately. Unfinished areas may be available to be finished. Finished basement areas below grade may vary in value from finished above-grade areas. Prices, specifications and availability are subject to change without notice. ©2023 Richmond American Homes, Richmond American Homes of Utah, Inc. (866.400.4131). 03/02/2023



ELEVATION D

ABOUT THE AVALON

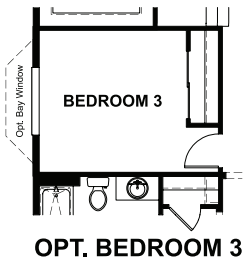
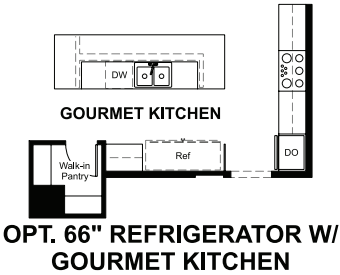
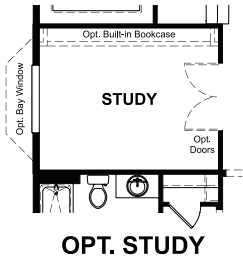
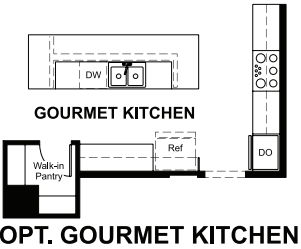
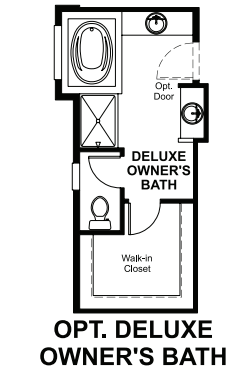
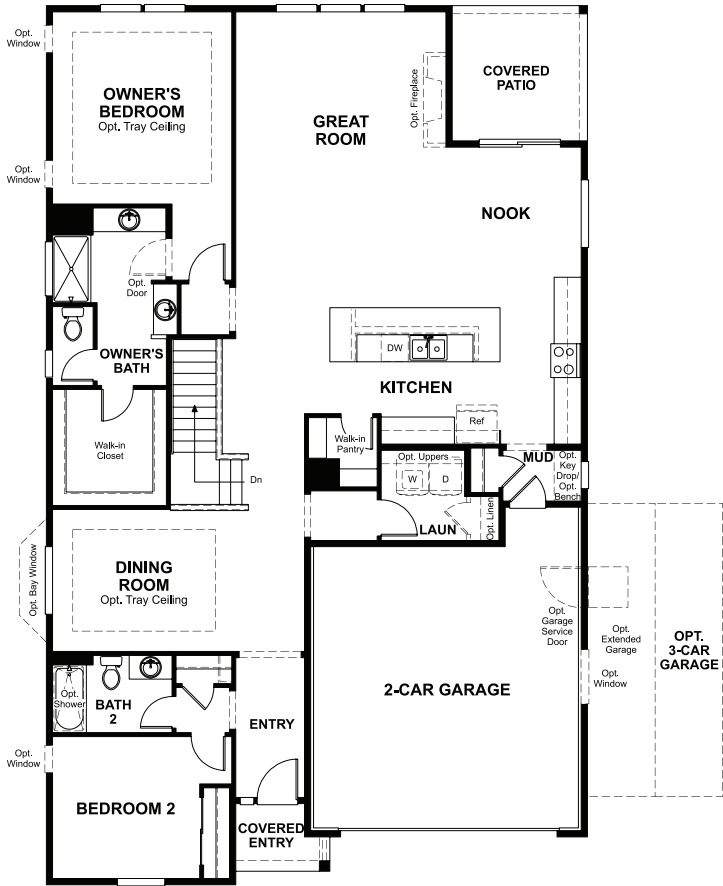
The single-story Avalon boasts a popular open layout, with a great room, a breakfast nook and a kitchen that can be personalized with gourmet features. The owner's bedroom is a few steps away and includes a walk-in closet and a private bathroom with a deluxe option featuring a shower and luxurious soaking tub. You'll also find a laundry, a covered patio, and a dining room that can be personalized as a third bedroom or a study. Additional options include an extended or 3-car garage and a finished basement complete with rec room, optional wet bar, bath and up to two additional bedrooms



ELEVATION C

MAIN FLOOR

MAIN-FLOOR OPTIONS



THIS PLAN'S PROJECTED  
**HERS® INDEX = 64\***  
Projected rating based on plans – field confirmation required

**How does this floor plan rate?**  
Take a look: **100** = standard new home™ **130** = typical resale home™  
The lower the number, the better! Refer to the RESNET® HERS index brochure  
or go to **RESNET.us** and **HERSindex.com**

**What's a HERS® index?** HERS stands for Home Energy Rating System, a system created by RESNET® to measure home energy efficiency.^  
A projected HERS index or rating is a computer simulation performed prior to construction by a third-party HERS rater using RESNET-accredited rating software, rated feature and specification data derived from home plans, features and specifications, and other data selected or assumed by the rater. The projected HERS index is approximate and is subject to change without notice. Actual results will vary.