



ELEVATION C

ABOUT THE BOXWOOD

The beautiful Boxwood plan greets guests with a charming covered entry. On the main floor, you'll find a convenient powder room, an open great room and a well-appointed kitchen featuring a center island, a roomy pantry and a dining nook overlooking a serene covered patio. Upstairs, discover a central laundry along with three secondary bedrooms and a large loft that can be optioned as an additional bedroom. There is also a lavish owner's suite with a private bath and an oversized walk-in closet. Additional options include an extended covered patio and a 3-car garage.

COMMUNITY LOCATION:

Meridian at Star Valley | 7835 S. Enchanted Spring Drive | Tucson, AZ 85757 | **520.498.4105**

DESIGN CENTER LOCATION:

Tucson Home Gallery[™] | 3091 W. Ina Road | Tucson, AZ 85741 | **520.498.4112**

*This information is presented for educational purposes only. The HERS® index for a confirmed rating will be determined by a third-party HERS rater based on data gathered from on-site observations and, if required, testing of rated features for a home as featured, optioned, located, oriented and/or built.

**Standard new home is based on the RESNET® Reference Home definition with a HERS index of 100 (based on the 2006 International Energy Conservation Code).

***Typical resale home is based on the U.S. Department of Energy definition with a HERS index of 130.

^RESNET has developed the HERS index to indicate the comparative efficiencies of homes. It is no guarantee that energy efficiencies will be achieved.

Floor plans and renderings are conceptual drawings and may vary from actual plans and homes as built. Options and features may not be available on all homes and are subject to change without notice. Actual homes may vary from photos and/or drawings which show upgraded landscaping and may not represent the lowest-priced homes in the community. Features may include optional upgrades and may not be available on all homes. Prices, specifications and availability are subject to change without notice. ©2022 Richmond American Homes, Richmond American Homes of Arizona, Inc. (a public report is available on the state real estate department's website), Richmond American Construction, Inc. ROC #206612. 9/22/2022

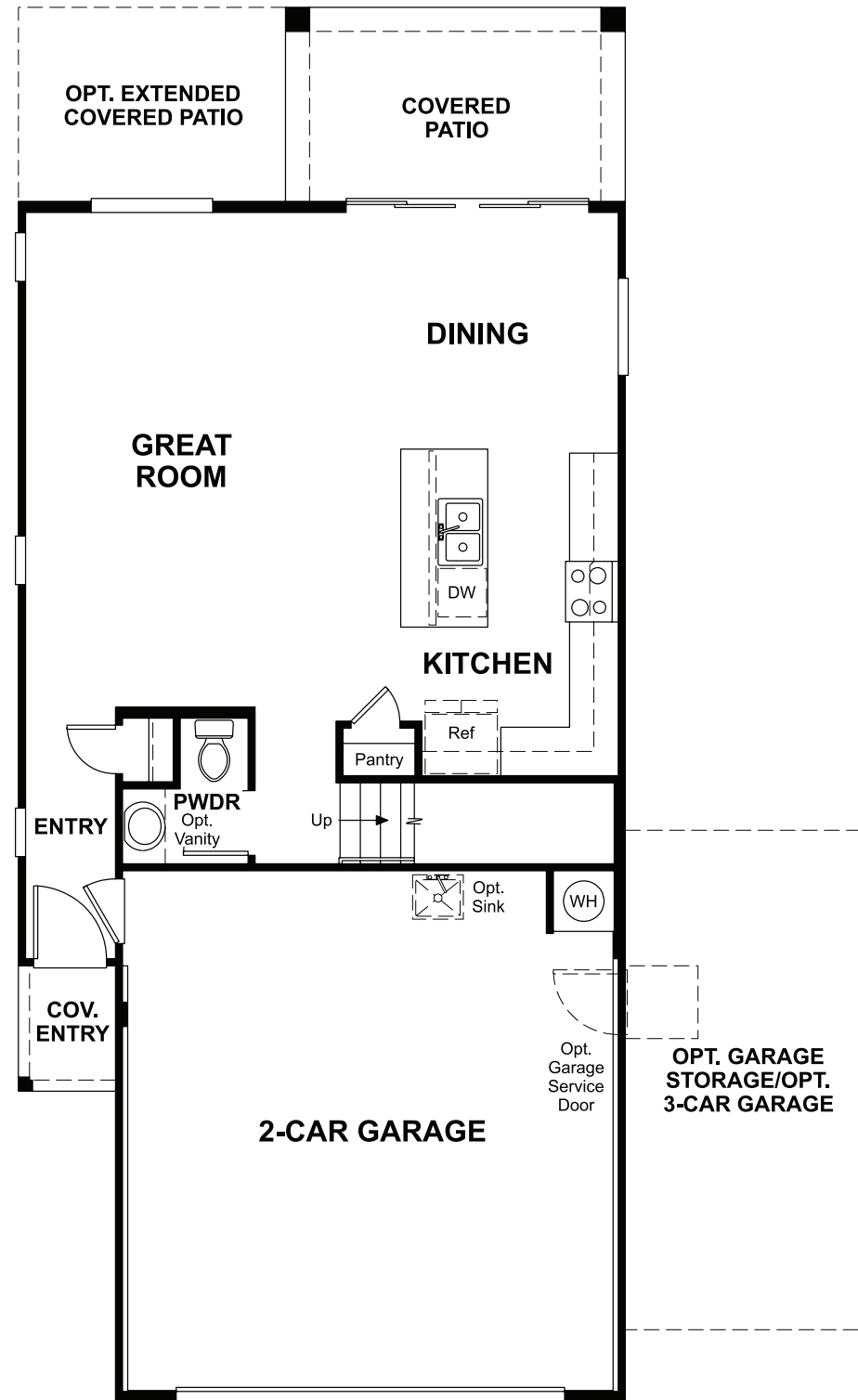


ELEVATION A

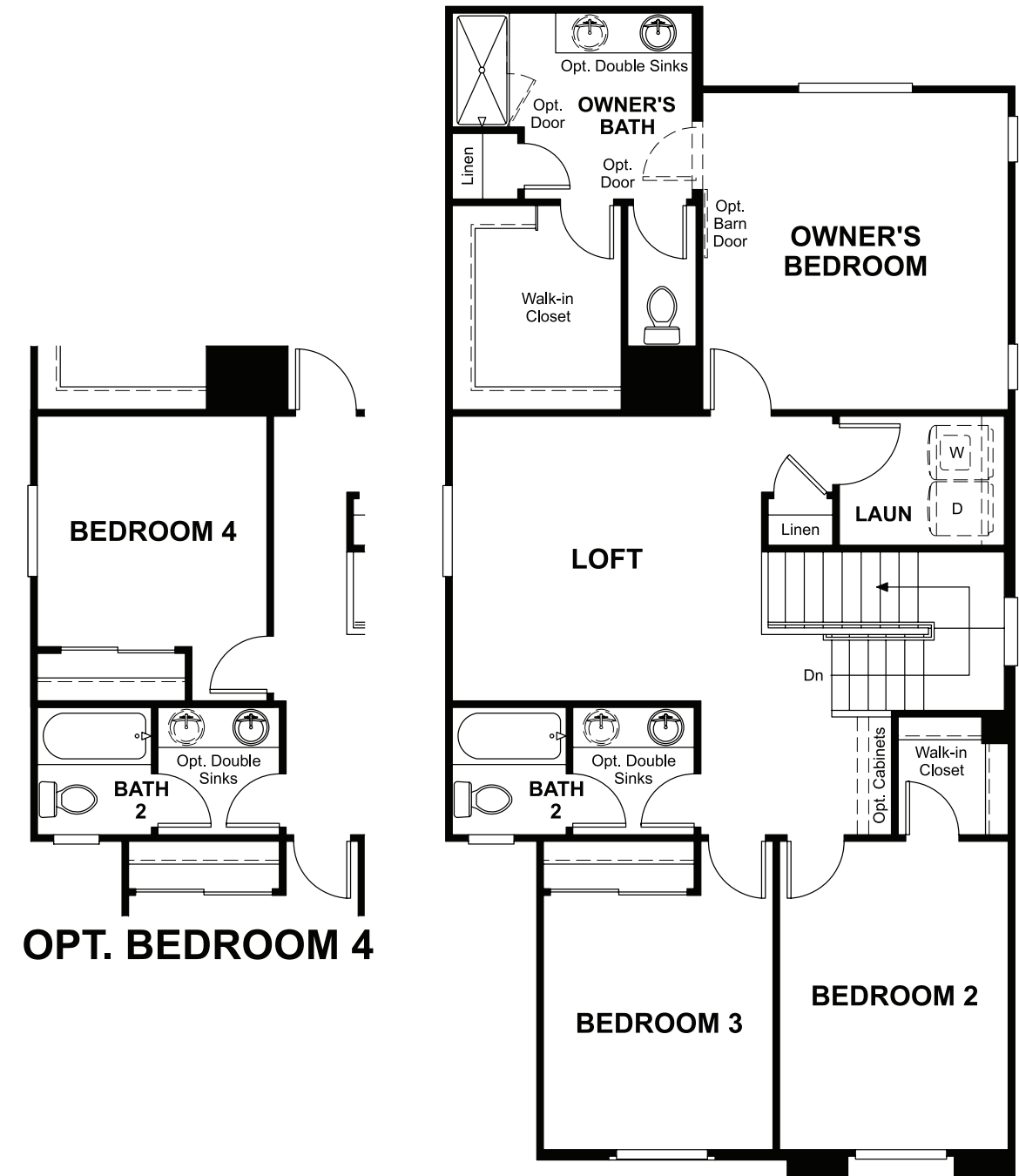


ELEVATION B

MAIN FLOOR



SECOND FLOOR



THIS PLAN'S PROJECTED
HERS® INDEX = 52*
Projected rating based on plans – field confirmation required

How does this floor plan rate?

Take a look: **100** = standard new home™ **130** = typical resale home™
The lower the number, the better! Refer to the RESNET® HERS index brochure or go to RESNET.us and HERSindex.com

What's a HERS® index? HERS stands for Home Energy Rating System, a system created by RESNET® to measure home energy efficiency.^^

A projected HERS index or rating is a computer simulation performed prior to construction by a third-party HERS rater using RESNET-accredited rating software, rated feature and specification data derived from home plans, features and specifications, and other data selected or assumed by the rater. The projected HERS index is approximate and is subject to change without notice. Actual results will vary.