

THE PEARL

Approx. 2,420 sq. ft. | 3 to 5 bed | 2.5 to 3 bath | 2- to 3-car garage | Plan #B913



ELEVATION D

ABOUT THE PEARL

The Pearl plan offers two stories of thoughtful living space. A spacious kitchen provides a panoramic view of the main floor—overlooking an elegant dining room and a large great room. You’ll also enjoy a convenient powder room and private study located by the entryway. Upstairs, an open loft features access to a laundry room and three bedrooms, including a lavish owner’s suite with a roomy walk-in closet and attached bath. Options include bedrooms in lieu of the loft and study.



ELEVATION A



ELEVATION B

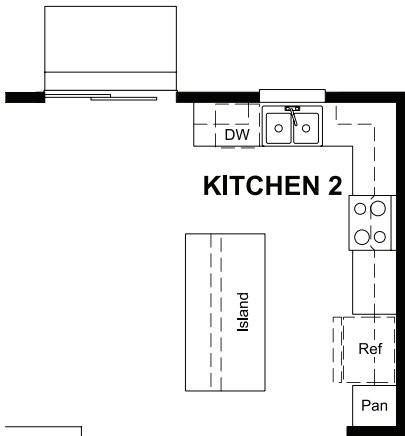
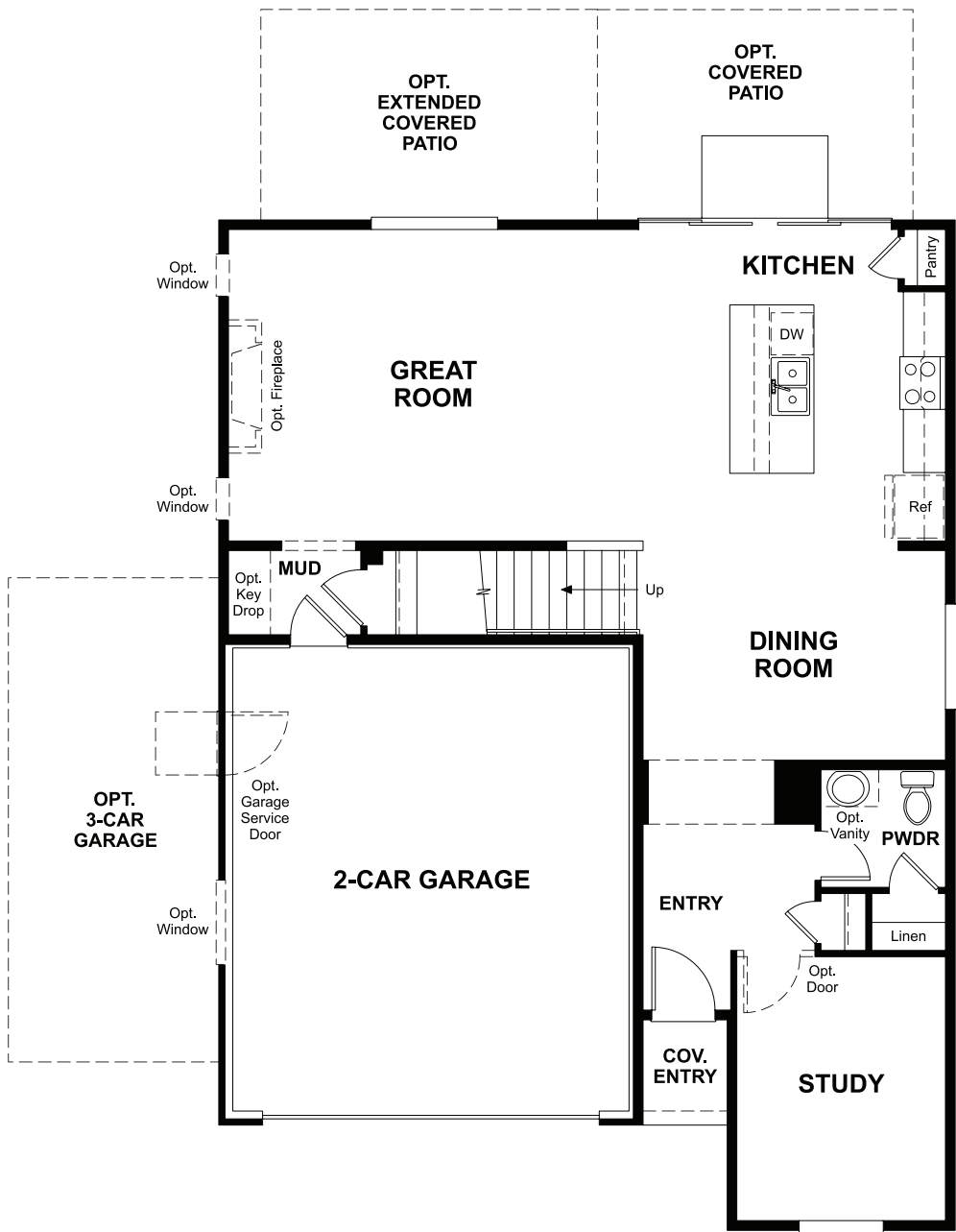


ELEVATION C

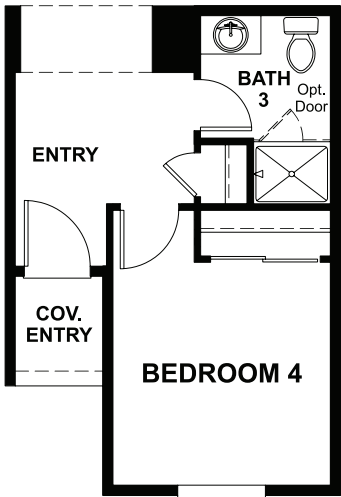


Floor plans and renderings are conceptual drawings and may vary from actual plans and homes as built. Options and features may not be available on all homes and are subject to change without notice. Actual homes may vary from photos and/or drawings which show upgraded landscaping and may not represent the lowest-priced homes in the community. Features may include optional upgrades and may not be available on all homes. Prices, specifications and availability are subject to change without notice. Square footage is approximate and subject to change without notice. ©2021 Richmond American Homes, Richmond American Homes of Idaho, Inc., #RCE-57923. 11/22/2021

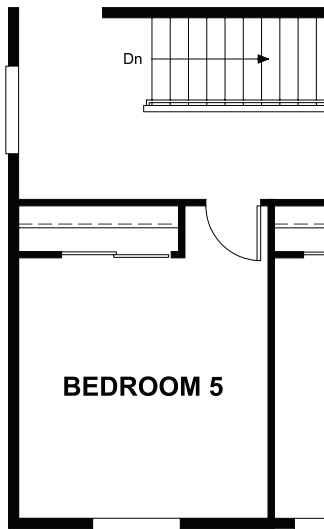
MAIN FLOOR



OPT. KITCHEN 2



OPT. BEDROOM 4/
BATH 3



OPT. BEDROOM 5

SECOND FLOOR

